

“When I gave this thing the name FIRST®, I said ‘It’s all about inspiration. If we don’t change what they’re inspired by, the world will.’ When I thought about that, it never occurred to me that one of the people who would end up being inspired is me. By all of you ... And I hope that you all inspire each other.”

FIRST Founder, Dean Kamen



We’ve always been
MORE THAN ROBOTSSM

Our founder, inventor Dean Kamen, has been saying it for over 25 years –

*“Our mission is about more than building robots;
we are working to inspire and change a culture.”*

FIRST® (For Inspiration and Recognition of Science and Technology) — a 501(c)(3) not-for-profit public charity whose mission is to help develop our students into tomorrow’s science and technology leaders and innovators — uses young people’s interest in, and fascination with, robots as the “honey” to draw them into a progression of fun, engaging robotics and research programs. In the process, they learn the importance of team building and mutual respect, gain self-confidence, and develop crucial leadership and life skills, as well as master much-in-demand STEM (science, technology, engineering, and math) knowledge. They are transforming into tomorrow’s leaders.

Kids building robots is a clever disguise for a rapidly expanding community devoted to altering our culture into one where scientists and engineers are celebrated and revered on the same level as athletes and celebrities. Our unified goal is to open doors for all kids so that they may discover new interests and pathways, leading them to careers in science and engineering that they might never have considered.

We are extremely proud of the impact **FIRST** is making on this cultural change. Leaders in government, media, education, and even the entertainment world, are recognizing **FIRST** as a genuine game-changer in the lives of hundreds of thousands of students. They are eagerly embracing our programs because they have witnessed for themselves that the essence of **FIRST** is *More Than RobotsSM*.

Will you join us in making a difference?

Learn the full **FIRST** story — our vision, reach, programs, and events — at www.firstinspires.org



A decade of verifiable data shows that exposing kids to fun, exciting FIRST programs builds 21st century work skills and greatly increases their motivation to seek education and careers in STEM fields.

STEM EXPOSURE **STEM INTEREST & SKILLS** **EDUCATION, STEM CAREERS** **LONG-TERM OUTCOMES**

*Unless noted, the data represented is the lowest value from the formal evaluations of the programs.

- 84%** work on the robot
- 90%** work on team strategy
- 88%** in *FIRST*® LEGO® League work on programming (63% in *FIRST*® Tech Challenge; 37% in *FIRST*® Robotics Competition)
- 84%** learn about STEM jobs
- 66%** make presentations to Judges
- 97%** have FUN!

- 88%** more interested in learning about science or technology
- 88%** better understand how STEM is used to solve real-world problems
- 98%** increase teamwork skills
- 93%** increase problem-solving skills

- 86%** more interested in doing well in school
- 84%** motivated to take challenging math or science classes (*FIRST* Robotics Competition, *FIRST* Tech Challenge)
- 94%** embrace the importance of *Coopertition*®, *Gracious Professionalism*®
- 80%** more interested in jobs that use STEM

FIRST Alumni are:

College Majors:
3x as likely to major in engineering and
4x as likely for women in *FIRST* to major in engineering*

Career Expectations:
 Nearly **4x** as likely to pursue a career in engineering*

Opportunities:
10x as likely to have an apprenticeship, internship, or co-op job in their freshman year of college*

*Than a matched comparison group

ULTIMATE IMPACT **75%+** of *FIRST* Alumni are in a STEM field (student or professional)

Inspired to learn more?
www.firstinspires.org/about/impact

Sources: Brandeis University: Cross-Program Evaluation of *FIRST* Tech Challenge and *FIRST* Robotics Competition (2011); Evaluation of the 2012-13 *FIRST* LEGO League Program (2013); and More than Robots: Evaluation of *FIRST* Robotics Competition Participant and Institutional Impacts (2005); *FIRST*, 2015 Survey of *FIRST* Robotics Competition and *FIRST* Tech Challenge Alumni

Founder's & Co-Chairs' Letter



Dean Kamen, *Founder*

Sheri McCoy, *Co-Chair, Board of Directors*

Bob Tuttle, *Co-Chair, Board of Directors*

To the uninitiated, *FIRST* may seem like kids just having fun with robots. To those of us devoting more than 25 years to this work, and to our millions of past and present participants, reality is quite the opposite. *FIRST* is so much *More Than Robots*SM.

Through the generosity of hundreds of thousands of Volunteers, Mentors, and Sponsors, *FIRST* offers young people the world over the opportunity to explore, learn, work as a cohesive team, take on and solve incredible challenges, and develop personal and professional skills that put them on paths to a successful adult life. Robots and research involving science, technology, engineering, and math (STEM) are what they do. Tomorrow's leaders are what they become.

Moving into our second quarter-century, we can proudly look back to see how far we have come since our humble, 28-team beginning in 1989. In 2015, we served more than 39,000 teams composed of approximately 360,000 kids, ages 6 through 18, in over 80 countries. Along their journey, incredible adults gave more than 13 million hours, last year alone, of their precious time to guide and support them, filling over 190,000 Volunteer roles. These astounding numbers continue to grow, in part because we can cite the concrete impact our Programs have on our students: more than 75 percent of *FIRST* Alumni are studying for or working in STEM careers, and female *FIRST* participants are four times more likely to study STEM subjects.* We invite you to be inspired at www.firstinspires.org/about/impact.

If we are to continue our growth trajectory, reaching out to ever more students in need of inspiration, 21st-century work skills, and life-changing discovery — including those in underrepresented and underserved populations — we need your help. What can you do? Commit your organization's resources and people. Sponsor one or more teams. On a personal level, become a Mentor, raise funds, or volunteer in your community. Every contribution counts and every volunteer hour is cherished.

We cannot adequately thank our Strategic Partners, Founding Sponsors, Sponsors, Mentors, Volunteers, participating School and Program Administrators, Parents, and Teachers. These inspirational people and organizations selflessly offer their experience, knowledge, time, and resources in the most creative ways. We salute you!

Kids who dream big, who like to tinker, who need a boost in self-confidence, who yearn for an inclusive, non-judgmental environment to discover their own talents, who want a chance to make something of themselves, need all of us working together. We believe the opportunities offered by *FIRST* should be accessible to every student and belong in every school. Will you join with us to make that dream come true?

*Sources: *FIRST*, 2011, Survey of *FIRST* Alumni; Brandeis University, *More than Robots: Evaluation of FIRST Robotics Competition Participant and Institutional Impacts* (2005)



Donald E. Bossi, President

President's Letter

When I hear the phrase “*More Than Robots*,” I start thinking about all the ways that *FIRST* is “more.”

More accessibility Regardless of social or economic circumstances, we offer learning and discovery opportunities to youth everywhere, with a special emphasis to include girls and youth from diverse backgrounds.

More connections *FIRST* participants, young and old alike, build friendships, as well as social and professional networks, that enhance their lives now and provide life-changing influences and direction into the future.

More growth Despite our significant reach, our quest is to provide even more opportunities to become involved in *FIRST* as a student, Mentor, Sponsor, or Volunteer. Expanding access to our programs in every way possible is our top priority.

More preparedness Today’s students need sophisticated education that includes more than just codified knowledge. They need 21st century workforce skills. We’re proud to be a leader in developing collaborative creative competence in our young people, giving them a better chance for a productive and successful future.

FIRST touches more people in more ways than any other program I know — kids, who find a safe, fun place where they can develop and belong; students, whose lives are changed because they discovered new opportunities; Mentors, whose lives are enriched by working with engaged youth; grateful parents, whose children earn college scholarship support.

In 2015, we had many more milestones to celebrate, among them the formation of new Strategic Alliances with the American Society for Engineering Education, The Society of Hispanic Professional Engineers, and the National Center for Women & Information Technology. Our *FIRST* Scholarships program grew to over \$22 million in awards made available by nearly 200 Scholarship Providers in the U.S., Australia, Canada, and Mexico. We’ve launched an initiative that will further embed inclusion within the *FIRST* organization and community and improve the diversity of program participants.

In addition, we continue to learn more about the impact of our programs on participants. Findings from the second year of a longitudinal study conducted by Brandeis University* show that *FIRST* has positive impacts on team members’ interest, knowledge, and identity in STEM, as well as their interest in STEM careers. While both boys and girls benefit from participation in *FIRST*, the positive impact on STEM outcomes is even greater for girls. These results support our belief that *FIRST* is playing a critical role in inspiring the next generation of scientists and engineers.

I gratefully thank everyone who has given their time, talent, resources, and support to help us reach even more deserving kids than we ever thought possible. I challenge us all to recommit our efforts to reach out to the millions more who have yet to experience the *FIRST* opportunity.

* Full report: www.firstinspires.org/about/impact

2015 SEASON HIGHLIGHTS

PROGRESSION OF PROGRAMS

A progression of four programs for ages 6 to 18; gets young people involved early, developing skills and building confidence, keeping them engaged through high school.



FIRST is honored to welcome three long-time supporters as new **Strategic Partners**: Bechtel Corporation, The Dow Chemical Company, and Qualcomm Incorporated. Thank you!

Outstanding FIRST students were recognized at the **White House Science Fair**: FIRST Robotics Competition Team 842 "Falcon Robotics" and Team 5594 "Team Crew"; Girl Scout troop FIRST LEGO League Jr. Team "Supergirls."



FIRST ROBOTICS COMPETITION

Ages 14-18 (Grades 9-12)

Mentored by professional engineers, teams compete with 120-pound robots of their own design in this varsity *Sport for the Mind™*, combining the excitement of sport with the rigors of science and technology.

- Robotics
- Learn from the pros
- Game Play
- Scholarships

A "first" for FIRST: FIRST Tech Challenge introduced a new, game-changing, **mobile technology platform** for their robot control.

FIRST TECH CHALLENGE

Ages 12-18 (Grades 7-12)

Students learn to think like engineers and develop an engineering notebook to document their progress. Teams develop strategies, build robots from a reusable kit of parts, and compete head to head.

- Robotics
- Engineering Notebook
- Game Play
- Scholarships

The annual **FIRST LEGO League Global Innovation Award** presented by XPRIZE® celebrated its fifth anniversary; semi-finalists presented at the FIRST Championship.



FIRST LEGO LEAGUE

Ages 9-16* (Grades 4-8)
*Ages vary by country

Guided by the program's Core Values, teams build LEGO®-based autonomous robots and develop research projects based on a real-world Challenge that changes annually.

- Robotics
- LEGO®
- Game Play
- Research

2015 FIRST Championship, presented by Qualcomm, expanded to multiple St. Louis venues, drew 41,000+ attendees (over 900 teams), and hosted the inaugural **FIRST Innovation Faire**, featuring tech demos, hands-on activities, giveaways, and fun for all ages.



FIRST LEGO LEAGUE JR.

Ages 6-9 (Grades K-3)

Teams explore today's scientific challenges, then present their research using a LEGO® model with motorized parts and a *Show Me* poster.

- LEGO®
- Simple Machines
- Research
- Presentations



SlingShot, a Paul Lazarus documentary, profiles Dean Kamen's quest to bring clean water to the planet, and his devotion to introducing students to the life-altering career possibilities of science and technology through FIRST.

Spare Parts, a movie starring Jamie Lee Curtis, George Lopez, Carlos PenaVega, and Marisa Tomei, chronicles FIRST students' famous underdog robotic victory against college teams and features robots built by real FIRST teams.



Yohance Salimu

At the 2015 Showcase Presentation during the *FIRST* Championship in St. Louis, Mentor Tim Wright introduced a young man from an impoverished Los Angeles neighborhood, who rose to overcome great odds as “a born leader.” *FIRST* Alum Yohance Salimu is so much more than a leader. He is an inspiration to all.

Currently a Cadet 1st Class at the U.S. Air Force Academy, Yohance had it tougher than so many other kids in South LA’s Crenshaw High School. “My father had a lots and lots of kids, and he had health issues and my mother had mental health issues, so my brother and I became homeless.”

That’s when Tim and teacher, Urban Reyes, invited Yohance to join their *FIRST* Robotics Competition team. “Tim even offered me a place to stay at night and food when I was hungry.”

Yohance excelled on the team, becoming Captain. Tim offered him an internship at Aerospace Corporation where he worked. Yohance embraced the opportunity, using his earnings to pull his family out of a homeless shelter and onto their feet.



“*FIRST* helped develop my leadership skills, and the experience helped me gain admission to the Air Force Academy. I am the man I am today thanks to Tim Wright, Urban Reyes, and *FIRST*. I one day hope to mentor kids from my community.”

Yohance Salimu

1989

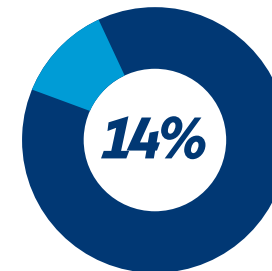
Year *FIRST* is founded to excite young people about science and technology

28

Number of teams competing in the inaugural 1992 *FIRST* season

Sport for the Mind™

The answer to “What’s *FIRST*?”



Growth in number of *FIRST* teams over 2014



50 U.S. States / 80+ Countries

A growing global phenomenon

Coopertition®

“Competing teams help and cooperate with each other” (a *FIRST* core value)

\$22 million+

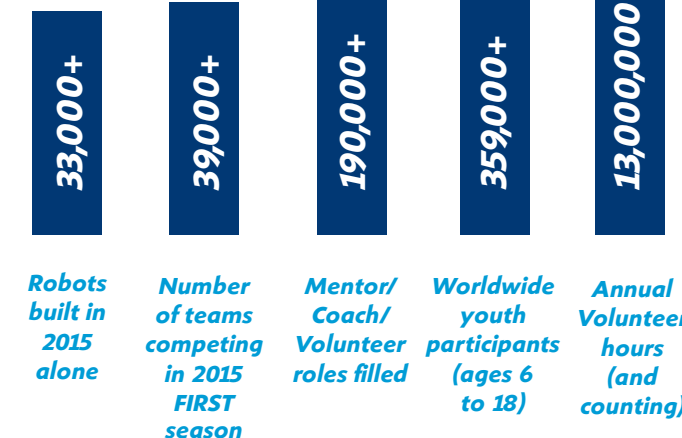
Scholarship funds available

Gracious Professionalism®

“Respect for others, being a good sport, sharing what you’ve learned” (another *FIRST* core value)



Opportunities for a meaningful experience





The Challenge

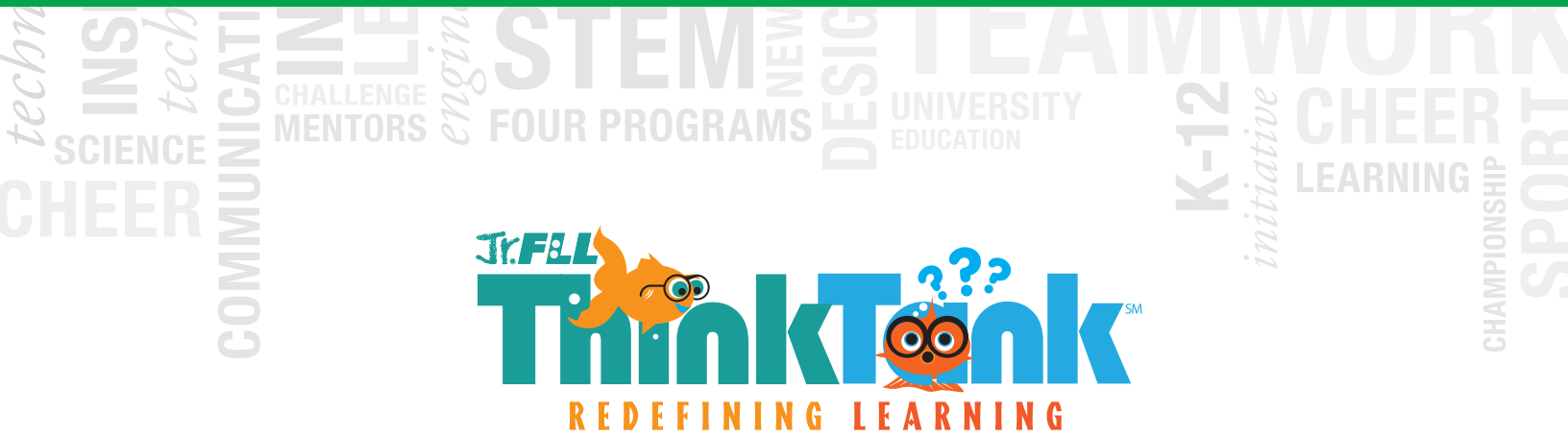
Students turned into detectives and researchers to gather information about how and where learning happens, then built LEGO® models and created *Show Me* posters depicting their journey of discovery

“To see these young kids so interested in helping at this level was amazing.”

JULIE WEISS, Coach
“Determined Dolphins”



5,653



Accomplishments

Approximately 34,000 6-9 year-olds participated on 5,653 teams in 23 countries, celebrating curiosity, imagination, discovery, and teamwork

Competitions

Nearly 250 regional Expos; Junior FIRST LEGO League World Festival Expo in St. Louis

Noteworthy

The Junior FIRST LEGO League World Festival Expo was extended to three days, and grew significantly to include 60 teams from five countries



More Than Learning:

FIRST LEGO League Jr. Team 2814
“Determined Dolphins”
Castle Pines, Colorado

Researched the plight of dolphins caught and often injured in fishing nets, including Winter, a dolphin with a prosthetic tail, featured in the movie *Dolphin Tale*

Developed ideas for prostheses to help dolphins and other injured animals

Contributed their own money to help fund a year’s worth a special care for Winter at the Clearwater Marine Aquarium (FL)



Read the *Determined Dolphins’ full profile* at

www.firstinspires.org/determined-dolphins

*The Junior FIRST LEGO League (Jr.FLL) program was renamed FIRST LEGO League Jr. in November, 2015.



Grades 4-8 (ages 9 to 16)

The Challenge

Teams researched and shared their innovative solutions to improve the learning experience, and used a team-designed autonomous robot, programmed with LEGO® MINDSTORMS®, to complete “missions” representing how we gather knowledge and skills

“It’s truly rewarding when you finally see your team embrace everything you’ve taught them, then turn around and teach it to other students.”

CHRISTINE TORRE, Coach
“The Braille Boys & Annie”



Accomplishments

Approximately 210,000 9-16 year-olds* on 26,044 teams from over 80 countries participated in this season’s Challenge

*Ages vary by country

Competitions

1,124 Qualifying Tournaments,
145 Championship Tournaments,
4 Open Championships;
FIRST LEGO League World Festival in St. Louis

Noteworthy

The 2014-2015 FLL WORLD CLASSSM season marked the fifth anniversary of the FIRST LEGO League Global Innovation Award, presented by XPRIZE®, and introduced live judging for 20 semi-finalist teams at the FIRST Championship



More Than Determined:

FIRST LEGO League Team 4678
“The Braille Boys & Annie”

Cumming, Georgia



Read The Braille Boys & Annie’s full profile at

www.firstinspires.org/braille-boys-and-annie



Researched the effectiveness of Braille tools through the National Federation of the Blind; discovered that 90 percent of blind children never learn Braille

Invented Insta-Braille®, a system that automatically “speaks” a letter, number, or word when a Braille symbol is touched, allowing a visually impaired person to learn Braille without the help of a sighted person

Honored as one of two runners-up in the FIRST LEGO League Global Innovation Award presented by XPRIZE®; used prize money to start a FIRST LEGO League team with visually impaired students



FIRST TECH CHALLENGE

Grades 7-12 (ages 12 to 18)

The Challenge

Teams designed, programmed, and operated robots to release a cascade of rolling, bouncing balls, score points dropping the balls into rolling tubes, and transport the tubes up a ramp to a scoring platform — all while racing against the clock!

“When these FIRST kids from around the world work together to solve a problem, they are unstoppable.”

SHARON JOHNSON, Coach
“Schrödinger’s Hat”

**Team
Growth**

4,445
3,800



Accomplishments

Approximately 45,000 participants (ages 12-18, grades 7-12) on 4,445 teams from 16 countries; eligible for over \$16 million in college scholarships

Competitions

388 Meets, League Championships, and Qualifying Tournaments; 63 Championship Tournaments; 4 Super-Regional Championship Tournaments; FIRST Tech Challenge World Championship in St. Louis

Noteworthy

FIRST Tech Challenge announced the new Android robotics platform to be used in the 2015-2016 season. Now teams will have the power of Qualcomm® Snapdragon™ technology and add “App Developer” to their skill sets



More Than Local:

FIRST Tech Challenge Team 3595
“Schrödinger’s Hat”
Fairbanks, Alaska



Read Schrödinger’s Hat’s full profile at


www.firstinspires.org/schrodingers-hat



Achieved top honors at recent FIRST Championships, including Inspire Award (2015), Rockwell Collins Innovate Award and Promote Award (2014)

Selected by FIRST to help compile an in-depth wiring guide to assist other teams with the technical aspects of outfitting a robot, following an impressive conference presentation

Earned widespread recognition as FIRST ambassadors in Alaska and beyond; mentored elementary students; sponsored FIRST LEGO League events; fostered connections with many diverse teams at the Asia Pacific Invitational in Sydney, Australia; enthusiastically embraced the FIRST “culture of opportunity”



FIRST ROBOTICS COMPETITION

Grades 9-12 (ages 14 to 18)

The Challenge

Competing Alliances guided team-designed robots to stack Totes on Scoring Platforms, cap those stacks with Recycling Containers, and properly dispose of Litter (pool noodles). All game pieces were reusable or recyclable at the end of the season.

“We call it SHAREing, which means Showing How Awesome a Robotics Education can be.”

DARRYL NEWHOUSE, Mentor
“The Wolverines”

**Team
Growth**



RECYCLE rush

Accomplishments

Approximately 72,500 high-school students on 2,900 teams from 19 countries; eligible for over \$22 million in college scholarships

Competitions

48 District Events; 5 State/ District Championships, 56 Regional Events; *FIRST* Robotics Competition Championship in St. Louis

Noteworthy

Inaugural *FIRST* Robotics Competition Australia Regional Event held in Sydney; *FIRST* Robotics Competition Championship expanded from 400 to 600 teams, and from 4 to 8 sub-divisions

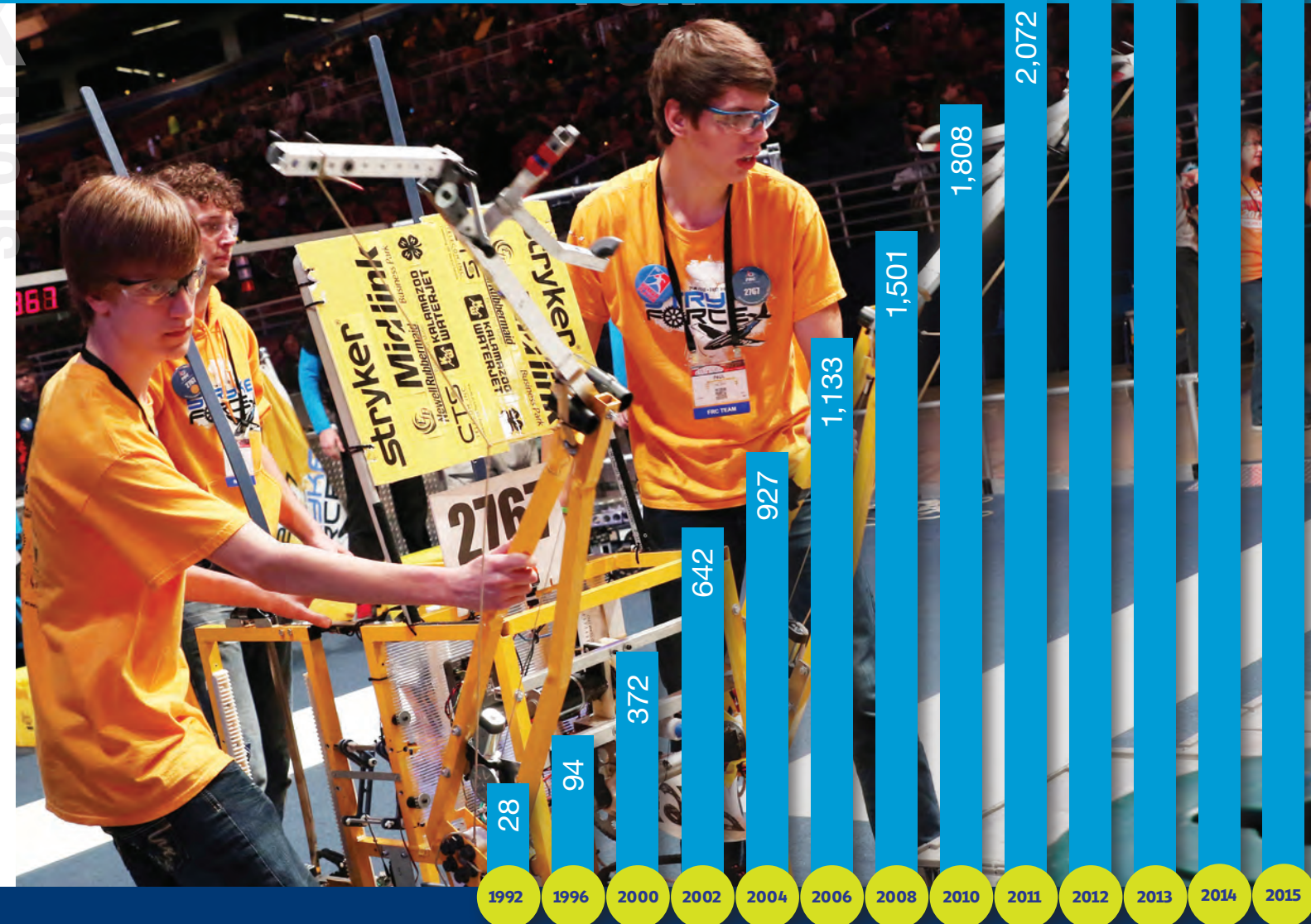


More Than Self:

FIRST Robotics Competition Team 597
“The Wolverines”
South Los Angeles, California



Read the Wolverine's full profile at
www.firstinspires.org/wolverines



Contributed over 6,000 hours of community service (tutoring, volunteering, etc.) annually to help make a difference in their underserved community of South Los Angeles

Established a partnership with School in a Bottle to help advance technology and construct environmentally-friendly schools for children in Guatemala

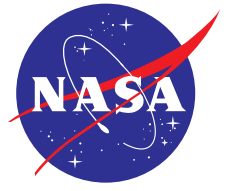
Awarded the prestigious Chairman's Award at the 2015 *FIRST* Championship for being leaders in transforming their community and spreading their passion for science and technology

FUN
 RESEARCH
 century skills
 K-12
 PROJECT-BASED
 STRATEGY
 Cooperitition
 ROBOT
 COMMUNICATIONS
 RESPECT
 FUTURE
 CHALLENGE
 DESIGN
 mind
 MATH
 INSPIRE
 SCHOLARSHIPS
 REAL-WORLD ISSU
 technol
 COMMUNITY ENGAGEMENT
 INTERNATIONAL
 SPONSORS
 INFLUEN
 Gracious Professionalism
 DIGITAL LITERACY
 TEAMWORK
 assist
 COACHES
 development

FIRST could not achieve the impact it does without tremendous support

In addition to our Sponsors, Suppliers, and Contributors acknowledged on these pages, FIRST extends its sincere appreciation to the tens of thousands of Volunteers who generously devote their time and expertise to FIRST Robotics Competition, FIRST Tech Challenge, FIRST LEGO League, and FIRST LEGO League Jr. teams and events. FIRST could not achieve the impact it does without this tremendous support.

FIRST 2014-2015 Strategic Partners



FIRST Founding Sponsors



- Member of the *FIRST* Board of Directors
- ▲ Member of the *FIRST* Executive Advisory Board
- *FIRST* Honorary Director
- * *FIRST* Senior Advisor
- ◆ Matching Gift

**2014-2015 FIRST Contributors
Corporations and Corporate
Foundations**

\$1,000,000+

National Aeronautics and Space Administration (NASA)
Qualcomm Incorporated
United Technologies Corporation (UTC)

\$250,000 - \$999,999

3M Company
Abbott Fund
BAE Systems
Baxter International, Inc.
Bechtel Group Foundation
Bloomberg L.P.
The Boeing Company
Booz Allen Hamilton, Inc.
BOSCH Community Foundation
Boston Scientific Corporation
Caterpillar Foundation
Caterpillar, Inc.
Center for Energy Workforce Development (CEWD)
The Coca-Cola Company
Comcast NBCUniversal
Consolidated Edison Company of New York, Inc.
Corporation for National and Community Service (CNCS)
The Dow Chemical Company
Energizer Holdings, Inc.
FedEx Corporation
Ford Motor Company
General Electric Company (GE)
General Motors Company
Goldman Sachs Group, Inc.
Google.org
The Leona M. and Harry B. Helmsley Charitable Trust
John Deere
Johnson & Johnson
LEGO A/S
Leidos, Inc.
The Medtronic Foundation
Monsanto Company
Motorola Solutions Foundation
National Defense Education Program (NDEP)
NI
Novelis
NRG Energy, Inc.
Pentair Foundation
Pershing Square Foundation
PTC, Inc.

Rackspace Hosting
Rockwell Automation, Inc.
Rockwell Collins, Inc.
TE Connectivity
Two Sigma Investments, LLC
United Therapeutics Corporation
U.S. Air Force

Up to \$249,999

100 Black Men of Atlanta Inc.
1E Inc.
3Dconnexion
AAlderink Electric
AAON, Inc.
AB◆
Abacus Business Solutions
ABB Inc.
Abbott Laboratories
Accenture
Advanced Technology Services, Inc.
AdvanceTEC, LLC
a.i. Solutions
AKIMEKA
Alabama 4-H Club Foundation
Albany Tech Foundation, Inc.
Albany Technical College
Alcoa, Inc.
Alexander & Associates
Alliant Techsystems Inc. Employee Citizenship Fund◆
Allied Automation
AmazonSmile Foundation
American Acrylic
American Energy Partners
American Red Cross
American Society of Mechanical Engineers (ASME)
Amgen Foundation, Inc.
Amgen, Inc.
Amoskeag Terrace in memory of Claire C. Toohy
Analog Devices, Inc. (ADI)
Anonymous
Applied Materials, Inc.
Archer Racing Accessories
Ariel Investment Company
Arizona Bank & Trust
Arkansas Space Grant Consortium
Arkansas State Fairgrounds
Arrowhead Concrete Works, Inc.
ASCE Southern Colorado Branch
Association for Advancing Automation
AT&T, Inc.
AT&T United Way Employee Giving Campaign
ATI Specialty Alloys and Components
Atmos Energy
Automatic Data Processing, Inc.◆
Avnet

Baltimore Public Schools
Bank of America Charitable Foundation, Inc.◆
Barnet Associates LLC
Barr Engineering
Bausch & Lomb Incorporated
BCHC Child Care
Beckman Coulter Foundation
Belden Inc.
BELIMO Air Controls
Best Buy Children's Foundation
Best Buy Co., Inc.
BEST Robotics
BFK Foundation, Inc.
Bilim Kahramanlari
Bloomin' Brands, Inc.
Blue Medora LLC
Bob Crout Painting
Boca Bearing Company
The Boeing Company◆
BOOC
Boone County Education Foundation
Booz Allen Hamilton, Inc.◆
BOSCH
Boston Consulting Group in honor of Jim Heppelmann▲
Bottle Rocket LLC
Boys & Girls Clubs of Greater Sacramento
Boys & Girls Clubs of Tampa Bay
BP Corporation North America, Inc.
Bradley University
Bridge Northeast FL
Bright Funds Foundation
Brighthouse Networks
Butler Tool & Die, Inc.
Bylites
CACI, Inc.
California Community Foundation/Disney Ears to You Grant per Concetta Maratta
California Community Foundation/Disney Ears to You Grant per Brendan Radabaugh
California Community Foundation/Disney Ears to You Grant per Daniel Richardson
California Community Foundation/Disney Ears to You Grant per Micheal Sigmund
California Community Foundation/Disney Ears to You Grant per Brian Walters
California State University Dominguez Hills Foundation
California University of Pennsylvania
Canal Park Business Association (CPBA)
Candor PR
Cannon Air Force Base
Capitol Technology University
Carla Vista Sober Living LLC
Carnegie Mellon University
Caterpillar Global Mining, LLC
Caterpillar, Inc. - Pittsburgh
CenterPoint Energy

Central New York Community Foundations, Inc.
CETYS Universidad Baja California
C.H. Robinson Worldwide
Cherokee Nation
Chesapeake Energy Corporation
Chesapeake Technology International
The Chickasaw Nation
CIGNA Foundation◆
Circuit Assembly & Design
Cirrus Aircraft
Cisco Foundation◆
Cisco Foundation in honor of Mark Clifton & Christopher M. Myers
Cisco Systems, Inc.
Citizens Equity First Credit Union (CEFCU)
Cleveland County 4-H Foundations, Inc.
Cleveland Indians
Cochise Robotics Association
Colegato Foundation
Community Foundation for the Greater Capital Region
Community Foundation of Greater Chattanooga, Inc.
Community Foundation of Southwest Washington
Community Foundation of West Chester/Liberty
Community Health Charities of North Carolina
Community Management Assistance Corporation
Community Robotics Learning Foundation
Community Service Council of Greater Tulsa
Computer System Designers
ConocoPhillips Company
Cooper Memorial Library Association Inc.
Corning Incorporated
County of Monroe Industrial Development Agency
Cox Communications
CPS Energy
Credit Suisse (USA), Inc.
CSC Charitable Foundation
cse software, inc.
CUNY Hunter College
CUSD (Chandler Unified School District)
Custom Courier Solutions
Custom House ULC Forex
D&J Tech Service LLC
Dana Holding Corporation
DataNet Systems
DC Public Schools
Decatur Education Foundation
Deep Space Systems Inc.
Deer Creek Schools Foundation
DEKA Foundation
Dell Giving◆
Dell, Inc.
Delphi Automotive PLC
Delphi Foundation



In 2015, as part of the *FIRST* Scholarship Program, nearly 200 Scholarship Providers made available over \$22 million in scholarship opportunities to *FIRST* Robotics Competition team members. *FIRST* Tech Challenge participants were eligible for \$16 million of these funds.

The majority of *FIRST* scholarships are made available by colleges or universities for enrollment at their campuses; the remainder is made available by corporations, associations, or foundations for use at a selection of schools. The 2015 *FIRST* Scholarships are listed on pages 33-34.

To learn more about the *FIRST* Scholarship Program, or to make *FIRST* Scholarships available from your institution, please visit:

www.firstinspires.org/scholarships

Demand Electric, Inc.	ev3 Inc.	Genesis Attachments	The Help Group
Denso Manufacturing Tennessee, Inc.	Eversource Energy Foundation	Genesis Automation	Henderson Engineers, Inc.
Deuce Development Corporation	Everyone Givvs, Inc.	Georg Fischer Central Plastics, LLC	Henkel of America, Inc.
Devon Energy Corporation	Excel Fund	George Mason University	Henny Penny Corporation
Digi-Key Corporation	Exelon Dollars for Doers◆	Georgia Power Co. (A Southern Co.)	Henny Penny Foundation of the Dayton Foundation
Discovery Health Sciences Foundation	Express Employment Professionals	Girl Scouts of Eastern Missouri	Herman Miller Cares
Disney Worldwide Services, Inc.	ExxonMobil Corporation	Girl Scouts of Greater Atlanta	Highwater Ethanol, LLC
Dominion Nuclear Connecticut, Inc.	ExxonMobil Foundation◆	GitHub	Hilton
DonorsChoose.org	FEI Company	The Gleason Works	Hitachi Automotive Systems
Dot Foods, Inc.	Felta Multi-Media Inc.	Global Educational Excellence	Hitachi Data Systems
Dr. James A. Forrest Career & Technology Center	Fidelity Investments	Global Foundries	Holly Hill Self Storage
DT-New Orleans Airport	<i>FIRST</i> Robotics Competition Team 5269 "Sonic Sci-borgs"	Goldman Sachs Group, Inc.◆	Honda of America Mfg., Inc.
Duke Energy	First Solar Company	Golub Foundation (Pricechopper)	Honeywell Aerospace
Duluth Entertainment and Conference Center	First Tech Credit Union	Google.org Matching Gifts Program◆	Honeywell International Inc.
Dunlap Codding P.C.	Florida High Tech Corridor - UCF	GPA International Travel Services Inc.	IBM Corporation
Dura Automotive Systems	Florida High Tech Corridor - USF	The GRACO Foundation	IBM Corporation Employees ◆
E.J. Harrison & Sons	Florida Power & Light Company	Grand Canyon University	ICE Foundation
East Windsor Dental Arts	Florida Robotics Education, Inc.	Grandma's Adventure Zone	IDEAS Mfg. Inc.
Eastman Chemical Company	Fort Wayne Metals	Granite Bench Charitable Foundation	Ikonics
Eaton Computer Services	Foster, Murphy, Altman & Nickel in memory of Claire C. Toohy	Grant County 4-H Adult Leader's Association	Inasmuch Foundation
Eaton Corporation	Foundation for East Baton Rouge School System	Grant Thornton LLP	INSPR Media LLC
Eco Team Inc.	Franklin County 4-H Foundation	Greater Oklahoma City Chamber of Commerce	Institute for Academic Excellence
Ecolab Foundation	Freestyle	Greater Texas Foundation	Institute of Technology Foundation at Utica/Rome Inc.
Edgewater Resort & Waterpark	FTI Consulting, Inc.	Great-West Life & Annuity Insurance Company◆	Intel Foundation Volunteer Grant Program◆
Edward Jones Foundation	Fulcrum IT Services LLC	Greenspan Foundation	International Council on Systems Engineering (INCOSE)
EFC Systems	Fusion Jeunesse/Youth Fusion	Grundy Family YMCA	Irving Convention & Visitors Bureau
Electronic Arts, Inc.	Future Seekers Inc.	Haas Automation	Isthmus Engineering & Manufacturing Co-op
Elemental Technologies	General Dynamics	Hall Estill	ISU/Mills County Extension and Outreach
Embedded Planet	General Dynamics Advanced Information Systems	Hallmark University	Itasca Community College
Emerson Charitable Trust	General Electric Company (GE)	Hamilton AV	Itron Community Investment
Employees Charity Organization (ECHO) of Northrop Grumman - Rodney Qualls	General Electric Energy (Atlanta)	Hampton Dental Group, P.C.	Ivy Tech Foundation
Energeneics, Inc.	General Electric Healthcare	Hanover Architectural Products	Jacobs Technology, Inc.
enktesis, LLC	General Electric Oil & Gas	Harding Center for Distance Education in Bible and Ministry	The Jamar Company
Environmental Tectonics Corporation	General Electric Power & Water	Harding University	James Madison University College of Education
Envision Excellence in STEM Education Inc.	General Electric Power Systems	Harris Corporation	JCPenney
EOT 4-H Federation	General Electric Transportation	Harris Corporation, RF Communications Division	Jefferson Parish Convention and Visitors Bureau
ESL	General Mills Foundation	Harrison County 4-H Leaders Association	Jewish Federation of Greater Metrowest NJ
Essentia Health		Hartel's/DBJ Disposal	
E*TRADE Financial Matching Gifts Program◆			

John Bean Technologies Corporation
 John Deere ♦
 John Steele Zink Foundation
 Johnson & Johnson Ortho-Clinical Diagnostics
 Joint Economic Development Board of Unicoi County, Inc.
 Joy Global Inc.
 The JPMorgan Chase Foundation ♦
 Kaua'i Economic Development Board
 The Kenific Group Inc.
 Kentucky Engineering Foundation
 Kerr Foundation, Inc.
 Kettering University
 Kiamichi Technology Center
 Kings View Behavioral Health Systems
 Kirkpatrick Foundation, Inc.
 Kitware Inc.
 Kraus-Anderson Construction Co.
 Ladish Co. Foundation
 Lake Superior College
 Lakeshore Arts Alliance, Inc.
 Lam Research Foundation Fund at the East Bay Community Foundation
 Lamar
 Lear Corporation
 The LEGO Foundation
 LEM USA Inc.
 Liberty Robotics Foundation
 Lima Family YMCA
 Limoneira
 Lincoln Laboratory
 LinkedIn
 Linn Energy, LLC
 Little Rock Convention and Visitors Bureau
 LMCO Undersea Systems
 Lockheed Martin Corporation
 Lockheed Martin Kelly Aviation Center
 Lockheed Martin Maritime Systems & Sensors
 Lubbock Boys & Girls Club
 M+W US, Inc.
 Macquarie University
 MadeRightHere
 Madison County Community Foundation Incorporated
 MAGNET the Manufacturing Advocacy & Growth Network
 The Manitowoc Company Foundation
 Marathon Petroleum
 Martin Engineering
 Martin Library Association
 Maryland Space Business Roundtable
 The MathWorks, Inc.
 Mattlin Foundation
 Mattson Technology, Inc.
 Maxim Integrated
 MeadWestvaco Foundation ♦
 Medtronic, Inc. ♦
 Meggitt Polymers and Composites

Mentor Graphics Foundation
 Meritor
 Metavante Corporation
 Michael Best & Friedrich LLP
 Microchip Employees United Way
 Microchip Technology, Inc.
 Micron
 Microsoft Corporation
 Microsoft Corporation Matching Gifts Program ♦
 Microsoft Corporation Silicon Valley
 Friends of Middletown Robotics
 Mile High United Way
 Miller Family Philanthropy
 Miner's/Super One
 Minnesota Interactive Marketing Association
 Minnesota Power Foundation
 MN State High School League
 Monsantotogether ♦
 Montana State University
 Montclair Fund for Educational Excellence, Inc.
 Moore Fans LLC
 Morgan Stanley Foundation ♦
 Motiva
 Motorola Mobility Foundation
 Mount Dora Library Association, Inc.
 Mouser Electronics, Inc.
 MPECU - Minnesota Power Employees Credit Union
 MRI Global
 MSP Communications
 MTEQ - Manufacturing Techniques, Inc.
 MV Consulting, Inc.
 MVATC
 Nacel Open Door, Inc.
 NASA Armstrong Flight Research Center
 NASA Johnson Space Center
 The National Center Simulation
 National Defense Education Program (NDEP)
 National Grid
 National Society of Black Engineers (NSBE)
 Navistar
 NetScout Systems Inc. Charitable Giving Program
 New Brunswick Education Foundation Inc.
 Newfane Circuit Stompers, Inc.
 News Corp
 Nexteer Automotive
 NH Space Grant Consortium/NASA EPSCoR
 Nidec Motor Corporation
 Nora Teipen Performing Arts Studios, LLC
 Nordson Corp.
 North Atlantic Industries
 North Carolina State University
 Northern Door & Hardware, Inc.
 Northland Foundation
 Northrop Grumman Corporation
 Northwest Maritime Center

Norwolf Tool Works, Inc.
 Novak Technical Services
 Nuclear Energy Institute
 Nucor
 NVIDIA Corporation
 NYCharities.org
 Nypro Inc.
 Ocean Acres Veterinary Office
 Offit Capital Advisors LLC
 OGE Energy Corporation Foundation, Inc.
 Ohio County Community Foundation
 The Ohio Educational Outreach Foundation
 Ohio Space Grant Consortium
 OK Business Roundtable
 Oklahoma Aeronautics Commission
 Oklahoma Center for the Advancement of Science & Technology
 Oklahoma Christian University
 Oklahoma City Convention and Visitors Bureau
 Oklahoma State University
 Oklahoma State University, College of Engineering
 ON Semiconductor
 OneFire Media Group, Inc.
 Oracle Foundation
 Orbital Sciences Corporation
 Osceola County 4-H Foundation
 Oshkosh Corporation
 Outerwall
 P&G Engineering Modeling and Simulation
 P&G Foundation
 Pace Analytical Services, Inc.
 Page County Agricultural Extension Educational Fund
 Parker Hannifin Corporation
 Parker Hannifin Foundation
 The Ralph M. Parsons Foundation
 Partners for Community Inc.
 Patriarch Partners/I Am Jane
 Patriots Technology Training Center
 PDF Solutions, Inc.
 Peak Analysis & Automation, Inc.
 Penn State Coop Extension
 Pennoni Associates Inc.
 Pennsylvania State University
 People for Leisure and Youth, Inc. (PLAY)
 PG&E Corporation
 Pheasant Hill Foundation
 Phil's BBQ of Point Loma, Inc.
 Picatinny Arsenal
 Pitney Bowes ♦
 The Pitney Bowes Foundation
 Platt Electric Supply
 The Plexus Corporation Charitable Foundation, Inc. ♦
 Polk State College Foundation, Inc.
 Presbyterian Health Foundation
 Prism Technologies Group
 The Procter & Gamble Company

Progea USA, LLC
 Progress Software
 Public Service Enterprise Group
 Purdue University
 PwC Charitable Foundation, Inc.
 The Quaker Chemical Foundation
 Qualcomm Incorporated Matching Gift Program ♦
 Quality Sheet Metal & Welding Inc.
 Radio Systems Corporation
 RAS Communications
 Raytheon Company
 Raytheon Space and Airborne Systems
 RCAL Products, Inc.
 RCO Enterprises
 Reed Technology and Information Services Inc.
 Regeneron Pharmaceuticals, Inc. ♦
 REM "Catch the Dream"
 Republic Bank
 The Research Corporation of the University of Hawaii
 The Research Foundation for State University of New York
 Resolution Copper Mining
 State of Rhode Island
 Ricardo, Inc.
 Riverside Tool & Die Co.
 Robotics Education & Competition Foundation
 Rochester Institute of Technology
 Rocketfuel
 The Roddenberry Foundation
 Rolls-Royce North America
 Rosetta Resources Inc.
 Royal Plaza, Inc.
 RTE Technologies, Inc.
 Rubio Premier Motors
 S.A. Greenwood Mgmt Resources LLC
 SAIC
 St. Jude Medical Foundation
 St. Louis Community College
 St. Louis Community College Foundation
 St. Louis Convention & Visitors Commission
 St. Louis Regional Chamber
 St. Louis Science Center
 St. Luke's
 St. Onge Foundation
 Salem-Keizer Education Foundation
 The Salvation Army - KROC
 Samuel Field YM & YWHA, Inc.
 San Diego State University
 SASTEMIC
 Saturn Systems Inc.
 Schaeffler Group USA Inc.
 Schneider Electric ♦
 School Outfitters
 Schuylerville Robotics, Inc.
 Science Foundation Arizona
 Scottrade, Inc.

Screen Semiconductor Solutions
 Servery
 Shell Oil Company Foundation Matching Gifts ♦
 Siemens Corporation
 Sil-Pro, LLC
 Skillpoint Alliance
 Skills USA
 SMC Corporation of America
 Smithfield Foods ♦
 Society of Hispanic Professional Engineers (SHPE) Professional Chapter of Cincinnati
 Society of Women Engineers (SWE) Sacramento Valley Section
 Solidyn Solutions
 Sonny's Enterprises
 Sony Corporation
 South Florida Science Center & Aquarium, Inc.
 Southwest Airlines Co.
 SpaceX
 Sparton Electronics
 Spirit of St. Louis Air Show
 Springfield Urban League
 SRA International Corporation
 SRA International Corporation on behalf of 2014 Service Star Recipients
 SRCtec, Inc.
 State Street Foundation
 Stay in Duluth
 Steuben County Literacy Coalition
 Stinger Ghaffarian Technologies
 Stratasys
 SubltUp Inc.
 SW District Extension of Oklahoma
 The Sylvan Laureate Foundation
 Syracuse Academy of Science Charter
 T. Rowe Price Associates, Inc.
 T. Rowe Price Foundation
 Tampa Bay Robotics Foundation, Inc.
 Target
 Taylor County 4-H Leaders Association
 TDK - Lambda Americas
 TE Connectivity Employment Engagement Fund ♦
 Teaching Matters, Inc.
 Teaching Textbooks Inc.
 Tennant Company
 Tennessee Valley Authority (TVA)
 Teradata Cares
 Teradata Corporation ♦
 Tesoro Corporation
 Texas Tech University
 Thorlabs, Inc.
 Thrivent Financial for Lutherans Foundation ♦
 Thunderbolt Hobby & Art
 Tiffany and Company ♦
 Time Warner Cable

Tomkins Gates Foundation
 Total Facility Solutions, Inc.
 Toyota
 Toyota Motor Engineering & Manufacturing North America Inc.
 Toyota USA Foundation
 TR Electronic
 Transamerica
 Trenton Public Education Foundation
 TrialNetworks in honor of Eric Silberstein
 Tripwire Fund of the Oregon Community Foundation
 TRUIST
 TTI Inc.
 TV Azteca SA B De CV
 UL
 Ultra Motion
 United Airlines Foundation
 United Health Foundation
 United HealthCare Services, Inc.
 United Launch Alliance (ULA)
 United Way - PCFO
 Universal McCann
 University of California, Davis
 University of Central Florida
 University of Cincinnati
 University of Illinois
 University of Minnesota College of Science & Engineering
 University of Minnesota Twin Cities
 University of North Carolina, Chapel Hill
 University of Oklahoma
 University of Southern Indiana
 University of Tulsa College of Engineering and Natural Sciences
 University of Virginia
 University of Wisconsin Platteville
 UPS Foundation
 U.S. Army ROTC
 U.S. Navy
 Utah State University
 UT-Battelle/Oak Ridge National Laboratory
 Uta Tradewinds Education Center
 UVAS Foundation
 Velcro Industries
 The Venture Center
 Verizon Foundation
 ViaSat, Inc.
 Virginia Polytechnic Institute and State University (Virginia Tech)
 Virginia Tech Foundation, Inc.
 Visit Duluth
 Vulcan Spring and Mfg Co.
 Wacky Buttons
 Waco Historical Society
 Walt Disney Company
 Walt Disney Imagineering
 Ward Petroleum Corporation
 Booker T. Washington Foundation for Excellence

FIRST Vice Chair John E. Abele Receives the FIRST Founder's Award



Technological visionary and philanthropist, John E. Abele, is the recipient of the 2015 Founder's Award for exceptional service in advancing the ideals and mission of *FIRST*.

A member of the *FIRST* Board of Directors since 1997 and current Vice Chair, Abele provides a fresh perspective and insightful counsel to help *FIRST* grow and become a recognizable cultural fixture. His contributions, both personally and through his enterprises — the Argosy Foundation, *FIRST* Founding Sponsor Boston Scientific Corporation, and the Kingbridge Centre — tie in with his dedication to science literacy for children, education, and the process by which new technology is invented, developed, and introduced to society.

Abele believes that participation in *FIRST* is an opportunity, a privilege, and a responsibility. The team grants and Fundraising Kit he has enabled help level the playing field so teams can participate that might not have been able to otherwise, while helping teams foster independence and self-sufficiency. His support spans the *FIRST* Progression of Programs, and beyond, with the funding of scholarships.

Abele relentlessly focuses on preserving *FIRST* values and promoting the concept that *FIRST* is about much *More Than Robots*SM. "It's not just STEM. It's not just *Gracious Professionalism*SM. It's the integration of all of that," says Abele.

Waste Management
Way Program
Wells Fargo & Company
Wells Fargo Advisors
Westhampton Architectural Glass, Inc.
Whataburger
Whelen Engineering Company
The Williams Companies, Inc.
The Williams Foundation
Wishes in Stitches Embroidery
WMS Gaming Chicago
Robert Hunt, Michael Pomianek and all the Shareholders at Wolf, Greenfield & Sacks, P.C. in memory of Claire C. Toohey
Wolfe Architecture & Design
Women for a Better Louisiana
Wonik IPS USA
Woolpert
Worcester Polytechnic Institute
W.W. Grainger, Inc.
Xavier University
Xcel Energy
Xerox Corporation
Xerox Foundation
Xilinx
XPRIZE®
Xyleme, Inc.
Y-12
YMCA of Broward County
YMCA of Michiana
Young Presidents' Organization, Chicago Chapter
Young Women's Leadership Network
YouYou Japanese Bistro
Zephyr Engineering Inc.
Zonta Club of Santa Clarita Valley Foundation

Individual and Family Foundation Donors

\$1,000,000+

Argosy Foundation

\$25,000+

Anonymous
Bezos Family Foundation
Brin Wojcicki Foundation
Lawrence & Tami Cohen
William Danforth
Ann & John ● Doerr
Walter Havenstein ■
The Heinz Endowments
Newman's Own Foundation, Inc.
Myron Ullman ■
Philip Venables
Paul Walker
Josh▲ & Judy Weston

\$5,000 - \$24,999

Craig and Barbara Barrett Foundation
Family and Friends of James B. Bassich
Donald Bossi ■
Don Bulens
Ursula Burns ■
The Curtis L. Carlson Family Foundation
Jane P. Chwick
James Dimon
Donald J. Duet
Thomas & Susan Dunn
Victor & Patricia Ganzi
John Gerbeth
Frank Grossman
Karen & Rick Hargrove
The Bruce J. Heim Foundation
Marc Hodosh ▲
Dr. Paul Jacobs ■
The Keough Family Foundation
Sheri McCoy ■
Thomas & Paula McLnerney
Scott McKay ■
The Milk Money Foundation, Inc.
Mosher Family Foundation
Dennis Muilenburg ■
Dr. William Murphy Jr. *
The Kenneth T. and Eileen L. Norris Foundation
The Gerald Oppenheimer Family Foundation
Robert ■ & Elizabeth Parkinson
Stephen & Jill Petty
Anita Pinkham
Aaron Raphel
Sanghi Family Foundation
Gary Schermerhorn
Marie & Matthew Schiller
Thomas J. Sommer in honor of Dean Kamen
Gary ● and Diane Tooker Family Foundation
Trio Foundation of St. Louis
Robert ■ & Lynn Tuttle
James Utaski ●
Gregory & Anneliese Wyler
Ronald Zarrella

Up to \$4,999

Daniel Abeln
Amber Aceti
Joshua Adelson
Mina Adsit
Susan Agrawal
Ben Agron
Ben Agron in memory of Jesse Laufer
Peggy Agron in memory of Jesse Laufer
Kevin Ainsworth
Mario Albuja
Joseph Allegro
Toomas Allik
Dorothy Altbaum in memory of Jesse Laufer

Stephen Amorosi
Claudia Anderson
R. Dale Anderson in honor of Kristin & Scott Anderson
Dennis Anderson
Donald Anderson
Jeffrey Anderson
Scott Andes
Anonymous Donors
Anonymous in honor of Sarah Edwards
Anonymous in honor of Nicholas Gentile
Anonymous in honor of Tim Haughian
Anonymous in honor of Jackson Kerber
Anonymous in memory of Jesse Laufer
Anonymous in honor of Sarah Anna Le
Anonymous in honor of the Martin Family
Anonymous in honor of Marian Passmore, Team 233
Anonymous in memory of Claire C. Toohey
Marilyn Arko in memory of Frank A. Brand, Sr.
Ronald Aroesty in memory of Claire C. Toohey
Simon Arthur
Simon Arthur in honor of Big Blue Saw Customers
Justin Ashtiani
Gary Asuncion
Greg Auclair
Crystal Aurand
Scott Austin
Jennifer Axelsen
Michele Azar
Babson Mustard Family
Graeme Baer
Becky Bailey
Tom Bain
Emily Rose Bainton
Russell Ball
Basavaraj Banakar
Bancroft-Clair Foundation
Jacob Bandes-Storch
Kelly Banks
Ashleigh Barber
Tom Barn
Jim and Dede Bartlett Foundation
Victor Bauer
Scott Baxter
Lynn Bayard in memory of Jesse Laufer
James Beabout
William Beach Jr.
William and Diana Beaulieu
Jeffery Becraft
Edwin & Dorothy Beland
Vladimir Belinkis
Francis Belizario
Daniel Beller in honor of Marilyn Sobel
Jason Benn
Tom Bent

Matthew Berg
Susan Berkowitz
Marilyn Bernstein in memory of Jesse Laufer
Stuart & Marcella Bernstein
Stuart & Marcella Bernstein in honor of Oleg Kosubevsky
Steven Berry Jr.
Brian Bertrand
Todd Bethel
Alfred Bie
Theodore Bills
Suzanne Bird
Chad Bishop
Brenda Bledsoe
Roy Bobo Jr.
E.A. Boesiger
Dennis & Denise Bone
Emily Bone
Stanley & Ann Borowiec
Steven Bose
Bovin Family Foundation
Peter Bower
Stephen Bozak
Brent Braden
Jeffrey Braun
Dr. Stevie and Rene Bravmann in memory of John Hofer
R.J. Briceno
Daniel Singer Bricklin
John Brigham
Rebecca Brodie in honor of John Brodie
Steve Brodie
Christopher & Barbara Brody
Richard Bronstein in memory of Jesse Laufer
David & Lori Brooks
Allyson Brown in honor of Gail VanEkeren
James Brown
Douglas Bruce in honor of Carolyn S. Bruce
Joanne Brustad in memory of Frank A. Brand
Nathaniel Buck
William Buckley
Phil Budashewitz in memory of Claire C. Toohey
Robert Bulmer
Terrell Burch
Cindy Burns
Kyle Burns
Elizabeth Bush
Matthew Buss
Carmen Butt
Lee-Ann Cabero
D.G. Callan
Kathleen Callow
Holly Capobianco
William Carboneau
Dave Card
John Card
Carolyn Carhuff
Tom Carlone

2015 Woodie Flowers Award Winner Puts Students FIRST

FIRST Robotics Competition Mentor, Mark Lawrence, is the recipient of the 2015 Woodie Flowers Award, founded by Dr. William P. Murphy Jr. to recognize an outstanding engineer or teacher who best demonstrates excellence in teaching science, math, and creative design.

Lawrence joined FIRST in 2005 as a founding Mentor of Team 1816 “The Green Machine” of Edina, Minnesota, and is known for always putting students first. He tirelessly devotes his time to mentoring students, reads their emails before those of adult Mentors or Volunteers, and has helped countless young people — not only on Team 1816 — pursue their passions and plan their career paths.



Not content until all students across Minnesota have access to FIRST, Lawrence founded the Minnesota Regional Planning Committee, fueling exponential growth and ensuring over 56 percent of Minnesota high-school students now have the opportunity to participate in the FIRST Robotics Competition. He led the charge to make the program a state-sanctioned varsity sport, with the same recognition as football and hockey, and works with other states to follow suit.

Lawrence pushes students and Mentors to achieve excellence and raises his expectations once they are met. The students call Lawrence “our most fervent and enthusiastic cheerleader. We can’t wait to see where he takes us in the future.”

David Carr	James Cook	Doug Desrochers	Peter Dunn
James Carr	Harold Cooper	Emily-Anne Deutsch	Nagarajan Duraisamy
Alvin Colon Carroll	Jeffrey Cooper	Dale DeYoung	James Durand
Michele Casari in memory of Aaron Casari	The Leon and Toby Cooperman Family Foundation	Nidhi Dhupati	Terry & Patti Durkin
Angela Ceglio	William Counts	Sriya Dhupati	Terry & Patti Durkin in memory of Claire C. Toohey
Gram Cgre	Philippe Couvignou in honor of Team 3647	Richard Di Bona in memory of Dr. Frank A. Brand	Terry & Patti Durkin in memory of Scott R. Frock
Ron Chaney	Wendy Covey	Martha Dickey	Adnan Durrani
Kenneth Chang	Connie Crawford▲	Stephen Diebold in honor of Robert Diebold Jr.	William Edds
Scott Chase	Reyner Crosby	H.A. Diep	Teri Ehrenhardt
Ji Chen	Alan Cunningham	John DiGiovanna	Mitzi and Warren Eisenberg Family Foundation
Andrew Christie	Roger Curtis	Jason Dillon	Mark Enzien
Gary Christelis	Lawrence Daddario	Deborah Dixon	Ronald Erb
Emily Christensen in memory of Jesse Laufer	Rich Daly	Jeffrey Dobrinsky	Robert Evans
Lesli Christie	Michael Damiani in memory of Susan Ryan	Michael Dodd	Jeffrey Evelhoch
Li Chunlin	Samuel Dangremond	Ryan Dognaux	Carolyn Fagan
Mickey L. Clagg	Susann Daniels	Timothy Donnelly	Randall Fahey
Dave Clark	Julie Schramm Datt	Emma Dorgan	Vickie Falzarano
Jane Cleary in memory of Claire Toohey	Rebecca Davenport	Irwin & Janet Dorros	Vickie Fedewa
Robert Clesi	Jason Davidson	Edward Dougherty	Norman Feit
Kellie Cloud	Kenneth & Lisa Davis	Kolbo Douglas	Brandon Feldman in memory of Jesse Laufer
Rebecca Cohen	Michael Davis	James Downey	Ferland Family Foundation, Inc.
Angella Coil	Matt Dawson	Dennis Drayer	Robert Firing
Jared Coke	Ron Deblinger	The Drexler Family Foundation	Kenneth Fitchhorn
Vincent & Lorraine Colarusso	Anne Marie DeBoard	James Dubin in memory of Jesse Laufer	Erin Fleck
Vincent Emery Colarusso	Tanuja Dehne in memory of Philip Crane	Joel Dubs	Bernard Flynn
Lori College in honor of Griffin College	Frank DeLorenzo	Jay Duchin	Greg Fodor
Tale Walbridge Collins	Paul DeMaida	Patrick & Janis Dunlap	
Cristi Colony	Lauren Demski		

Charlotte Fore
Laura Fox in honor of Laura & Michael's Wedding
Margaret Frankian
Graham Freedman
Dorothy Freer
David Freifelder
Ed Fried
Phil Friedman
Stephen and Fredrica Friedman
J.E. Gabb
Jamie Gage
David Gagliano
Michelle Gagnon in honor of Dean Kamen
Michelle Gagnon in honor of *FIRST* Employees
Cara Galli
Radha Ganapathy
Debbie Garbers
Thomas Garrett
Bill & Melinda Gates Foundation
Anne & Wendell Gauthier Family Foundation
David Gedymin
M.F. Geil
Geisler Family Trust
Paul Gessler in honor of Sarah Darwin
Joel Gilbert
Angie Gillette in honor of Hal Gillette
Ben Gilliland
Camille Chang Gilmore in memory of Dorothy Fischer
Paul & Theresa Giordanella
Mark Giordono
Jane Gitomer in memory of Jesse Laufer
Thomas Glenn
Jack Goble
Scott Godin
Richard Gold Jr. in honor of Lily Gold
Alfred Goldstein
Jeffrey & Doris Goldstein
Mr. & Mrs. Shari Goodrich in memory of Jesse Laufer
Jerry & Paula Gottesman
Daniel Goveas
E. Graham
Mark Grant
J.H. Green
Peter Green
Veryl Greene
Mark Greenlaw in memory of Shirley Greenlaw
Vana Gregg
Mr. & Mrs. John Gregor
Glenn Gribble
Eileen Griffee
Grace Griffin
Michael Grindl
Loretta Grob
Christopher Grontkowski

Larry and Jan Gros
Gregory Gross in honor of Terry Durkin
Steven & Jonith Grundmann
Lori Gruppuso
R.J. Haag
Brett Haaga
Josh Haldeman & Caroline Alikonis
Paul Hanau
Mindy Hangsleben in memory of T.J. (Thomas) Wirta
Geri Hansen
Thomas Hansen
David Hardy
Sheryl Harmon in memory of Jesse Laufer
Richard & Carol Harries
Dustin Harrington
Hartfiel Angel Foundation
James & Jennifer Hausch
Barbara Hayes
Richard Hayes
Laura Hayman
Stephen & Lynn Hazard
Matthew Heath
Trever Houston Hefner
Juan Herrera
R.L. Herron
Scott Heuler
Marilyn & James Hewson
Jaimee Mae Hickey
Steven Higgins
Tuan Hoang
Colin Holgate
Janet Honek in memory of T.J. (Thomas) Wirta
Shane Hooker
Joseph Houle
Marc Howard
Robert Howard
Mark Howland
Cynthia Howlett-Willis
Elizabeth Huddle in honor of Martina List
Mark Huey
Christopher Hughes
Kent Hughes ▲
Heidi Hullinger
Patti Hunter in memory of Jesse Laufer
Mary Pat Hussey in memory of Jesse Laufer
Ronald Iannucci
Robert Iles in honor of Daniel Whittle
Georgia Ioannou
D.J. Iyob
James Jacobs II
Mary Jacobsen
Sharon Jadrnak
Jeffrey Jaeckel
Joel Janke
Bill Jansen
Stephen Jelinek & Betsy Wisch

Ellen Jewett in memory of Jesse Laufer
Carrie Johnson in honor of Jim Rothrock
Judy Johnson
Kurt Johnson in honor of Jim Rothrock
Michael Johnson & Elizabeth Barnes
Timothy Johnson
Zolu Jose
M.A. Judy
Beverly Jurenko
Leslie Bender Jutzi
Suzie Kabeiseman
Jana Kaelin
Eileen Kaler
Pamela Kan
Shaun Kane
Menachem Kaplan in memory of Jesse Laufer
Collette Kaster
Daniel Kasun
L. Robert & Kathleen Kaswell
Richard Katz in memory of Jesse Laufer
Earle Kazis
Charles Kennedy
Muhtar Kent ■
Alexander Kernbaum
Judith A. Kersey
Ben Kershaw
Janette Kinnally
Wayne Kinsey
B. Kitchenka
Jill Klausner in memory of Jesse Laufer
Gerry Klinglesmith
Kathleen & George Klinich
Holly Koblish
Timothy Koch
Michael Kohler
Steven Korsch
Bernard and Carol Kossar Foundation Inc.
Ronda Kozlowski
Sharon Krawiec
Matthew Krever
Jerrold Krivitzky
The Kunkel Family Foundation
Randall Lam
Robert Lamaute
Jimmy Lambrinos
William & Beth Landman
Michael Lang
Kendra & Joseph Langevin
George Lanigan in memory of Claire C. Toohey
Richard Lanigan in memory of Claire C. Toohey
Janet Larsen
Ann Laure
Mike Lautzenheiser
Paul ▲ & Kelley Lazarus
Kim Le Quach

Kim Le Quach in honor of Sarah Anne Le (Quach)
Alison Leach in memory of John "Mike" Hofer
Jason Lee
Margaret Lehman in memory of Zachary Lehman, Mentor, *FIRST* Robotics Competition Team 1510 "Wildcats"
Bambi Lerner
Raymond LeVesque
Sean Lewis
LHB Foundation Fund
Ashley Liles
Pean Lim
T.C. Lim
Linda Lin in honor of Benjamin Miller
Samantha Lipscomb
John Lipsky in memory of Jesse Laufer
Thornton Lockwood
Luci Locsin
Guy Lohman
Devin Lombard
Michelle Long & Isaac Mishkit
Dr. Felix Lopez
Matthew Lorentzen
Vernon Loucks Jr.
Mannie Lowe
Andrew Jackson Lowery
Janice Luchner
Bruce Ludwig in memory of Jesse Laufer
Paul Ludwig
Scott Ludwig
Ronald Lushing in memory of Jesse Laufer
Nicholas Luther
Dorothy & Gerald Lynch in memory of Dr. Frank A. Brand
John Lynch ■
Russell & Tina Lyon
Cheryl Maayan
Frodo Magaiver
Vicki Magasinn in memory of Jesse Laufer
Jeanne Maguire
Richard Maher
Cristina Mahon
John Mahoney & Jeanne Cain in memory of Dr. Frank A. Brand
Carla Malden and Normal Beil in memory of Jesse Laufer
The Marcus Foundation, Inc.
Jeffrey Marell in memory of Jesse Laufer
John Marino
Jason Markesino
Gregory Marra
Michael Marshall
S.H. Marshall
Todd Martin
Michael Martinez
Gregory Marton & Debbie Seidell
Elliott & Cathy Masie

F.L. Massino
Diane Mastrorocco
Cristian Mata
Annick Matherne
Susie Mathieu ▲
Ashwin Mathur
James Matthew
Nancy Matthews in honor of John, Lynn and Annika
Jason Matznick
Donald May Jr. in honor of Carson Buol
Jeff May in honor of the ECIA Organization & Debbie Conyers
Paul Mayfield
Bart & Cheryl Mayforth
Kathleen McCarthy in memory of Reggie Cook
Robert McCarthy
Susan McCarthy
William McClung
Amy McCoskey
Jonathan McCoy
Veronica McDonnell
Debra McDuffie
Anne McGrath
Ryan McKeefrey
Gillian McPhee
Arruando Mebezerra
Kevin Meier
Gerald Mele
Miriam Melnick
John Merry
Melissa Messenger in memory of Charles Paul Messenger
Microsoft Corporation Employees
Makeda Mikael
Jim Mikel
George Milks
Mr. & Mrs. Miller
Dan & Kimberly Miller in honor of Scott & Kristin Anderson
Linda Miller in honor of Mari & Dan Dawley
Robin Miller in memory of Jesse Laufer
Scott Miller
William Miller
Maureen Mingey
John Mitt
Joseph Mollica
Ed Molyneux
Charles Monson in honor of the Holly Berg & Kory McDonald Wedding
Joanne Monty
Alex Moon
Richard More
Jack Morgan
Therese Moriarty in memory of Sefi Bloch
P.E. Morin
Harry Morrison
Seth Mosier in honor of Mike Mosier
Christina Mowers

Peter Mueller
Brian Muirhead
Katherine Mulligan
Timothy Mushkin
Tanya Nagatani in honor of Howard H. Nagatani
Cynthia Neal-Harris
John Nesi
Cecilia Neumann ▲
Benjamin Ng
Hop Dinh Nguyen in honor of Nam and Eugenia
Dr. John & Patricia Nguyen
Minh Nguyen
Phuong Nguyen
Van Nguyen
W. Nguyen
Christopher Nichols
Karen Nichols
William Nicholson III
Steven Niemitalo
L. Nimori
Martin & Marian Nishi
R.E. Nitschke
Jasper Norris
William Nottingham
Bill Nussey
Maxwell Nuyens
Marne Obernauer
Gene O'Brien
Maureen O'Connell
Edward O'Dwyer III
Ms. Sarah O'Hagan
Mr. & Mrs. Angel Olmeta in memory of Jesse Laufer
Christopher Olson
Lisa Kimi Omori
Teresa On in memory of Jesse Laufer
Catherine Ono
Hilary Oran in memory of Jesse Laufer
Robert K. Ortberg ■
Anne Orwerth in memory of the Bridges Family, Stephen Bridges
Ryan Packham
Cynthia Paden
Gregory K. Palm in honor of Oleg Kosubevsky
W.L. Palmer
Robert Palmquist in memory of Jesse Laufer
Robert Parker
Robert Parker in honor of the Bushaws
Kimberley Paul
Kathryn (Katie) Paultre in honor of the Anritsu Company
Kathryn (Katie) Paultre in honor of Bria Media
Kathryn (Katie) Paultre in honor of BWW Communications
Kathryn (Katie) Paultre in honor of Hufmann Media Sales

Kathryn (Katie) Paultre in honor of John Day
Kathryn (Katie) Paultre in honor of Linear Technology Corporation
Kathryn (Katie) Paultre in honor of Power Integrations
Kathryn (Katie) Paultre in honor of Power Systems Design
Marc Pawliger
Maggie Pax in honor of Ben Donahue - Battery Powered Pickle Jar Heads team
Maribeth Payton in honor of Holly Berg-McDonald
Glen Pearson
Jon Pence
Arnold S. Penner Foundation Inc.
R. Pereira
Pete Pereira
Guilherme Peretti
Philip Perivolaris
Jordan Perr-Sauer
John Peters
Kyle Petersen
Jacqueline Petit
My Thanh Pham
Sont Pham
Tammy Pham
David Phillips
Traci Ann Vinopal Phillips
Stephen Philpott
Robert Philpott Jr.
Joseph & Andrea Piacentine
Ashley Pierce
Kevin Pieters
Lorrie Piper
Elizabeth Plott
Richard Pogue
Michele Polk
William Pollock
Matthew Pope
Alex Poula
Eric Prager
Jennifer Prentice
Rob & Stacy Pressman
Thomas Propst
Kimberley Prygocki-Jeakins
Cyril Puthoff
Rodney Qualls
Jason Quesenberry
Eileen & Leslie Quick
Job Rabinowitz
Valerie Radwaner in memory of Jesse Laufer
Kim Raymoure
Thaddeus Reardon
Patricia Rector
Justin Reese
David Regen
Steven & Gail Reinemund
Christophe Renaud
David Rich

Jamie Rich
Robert James Richardson
Ariel Rideout
Elizabeth Riley
Leslie Ringling in honor of Mark Gurgol
Hiram Joel Rios
Cristina Roark
Stephen & Pilar Robert
Patricia Meeks Roberts
Gerard Roche
G.R. Rodgers
Jonathan Rodin
Hector Rodriguez-Aviles in memory of Mr. Sergio Hector Rodriguez Romo
Dennis Rogers in honor of Frank Brand
Nicholas Romano
M.D. Romero
Michael Romero
Rosenbluth Family Foundation
Rosenthal Family Foundation in memory of Jesse Laufer
Mark Rosin
Steven Ross
Jillian Leigh Rothwell
L.R. Rourke
Jennifer Roy
Paul Royte in memory of Dr. Frank A. Brand
Jonathan Rucker in honor of Reid Rucker
Edward Patrick Rush
M.W. Rushing
Michael Rusignuolo
Russell Charitable Fund
Edward Rust
The Ryan Family Foundation
Mark Sanfilippo
Lizabeth Sarakin
Dilip Sathe
Marjorie Sauer
Terrence Sauer
Lois Sayrs
Kristine Scarpone
Lisa Schaab
David Schafer in memory of Jesse Laufer
R.L. Schaffer
Mark Schemel
Paul Schilling
Eric Schimmel
James Schnur
J.R. Schnur
John Schreiber
Gordon Scott
Nancy Seiler in memory of Frank A. Brand
Elizabeth Seufert
Neal Shapiro
Catherine Shapp
Behrooz Shariati in memory of Claire C. Toohey
Peter Sharples
Eric & Mary Sherk

Young Inventors

The FIRST LEGO League Global Innovation Award presented by XPRIZE® Celebrated 5 Years

This award is designed to encourage and assist FIRST LEGO League teams to further develop their innovative solutions to real-world problems. For the first time this year, 20 Semi-Finalist teams presented their solutions to judges in person during the FIRST Championship in St. Louis. All teams were then inducted as Global Innovation Ambassadors, promising to continue their journey of innovation, share with their communities, and keep their spark of innovation lit.



The winner and two runners up were honored at a ceremony at the United States Patent and Trademark office in June, 2015.

First Place winners for the FIRST LEGO League WORLD CLASS™ season “Team Storm” of Terre Haute, Indiana

Invention:

The ROY G. BIV Math System is an app designed to improve the way children challenged with dyslexia learn new math concepts. This system keeps digits in place when math is performed, allowing students to easily spot flipped digits out of a rainbow color order.

The FIRST Future Innovator Award sponsored by the Abbott Fund

The FIRST Future Innovator Award launched this year with a new timeframe, allowing participation by more FIRST Tech Challenge and FIRST Robotics Competition teams in their off seasons. Through the invention of a unique solution, this award honors creativity and problem-solving. New this year is having teams apply their inventing skills to one of three chosen National Academy of Engineering’s Grand Challenges — access to clean water, advancing health informatics, or engineering the tools of scientific discovery.



Mary Shetterly
Brett Shurman in memory of Jesse Laufer
Joan Sides
F.S. Siegel
Jeffrey Siegel
Steve Siirila
Paul Silberberg
A.C. Sill
Jason Silver in memory of Jesse Laufer
Michael & Avis Silver
Paul Silverman
Randall & Cynthia Simatic
Kaplan Simons Family Foundation
Christopher Smith
Mark Snow
Andrea Sobel in memory of Jesse Laufer
Marilyn Sobel in memory of Jesse Laufer
Robert▲ & Kathleen Sobolewski
Julie Soldo
Miriam Somero
Lora Sondrol
Eileen M. Span
Allan Sperling in memory of Jesse Laufer
Jason Sproul
Stephen & Tina Squeri
Todd Stablein
Lisa Statchen
Milton Steiner
Roseann & Mark Stevens
Linda & Ken Stewart
Marion & Johnston Stewart in memory of Graeme Stuart
Peter & Elizabeth Stillmank
Dia Stolnitz
Chelsea Stone
Chelsea Stone in honor of Thunder Robotics
James Stone
Linda Stone
Andrew Stoneback
Dean Storgaard
Mr. Eric Strachan
Kate Straus
Martha Stubbs
Karen Sue
W.D. Sullivan
Deborah Sweeney
Joshua Sweetkind
Debbie & David Swenson
Peter Swenson
Aidan Synnott in memory of Jesse Laufer
Joseph and Arlene Taub Foundation
Diana Taylor in honor of North Carolina School of Science & Math
Richard Teel
Kristiane Teeple
Linda Tenda
J.A. Thalhamer
Roxanne Todor

Patricia Tolbert
John Towery
Bang Tran
Karen Treff
Nicholas Trent
Melissa Trepanier
Sandy Trissell
Dana Tupy
Mucahit Turel
William & Judith Turner
Robert■ & Lynn Tuttle in memory of Claire C. Toohey
Paul & Judy Ulland
Vijay Umapathy
Wesley Urbanik
Sameer Vachani
Donna Van Ness
Joe Varnell
Ms. Angela Ventresco
Angela Volk
Maria Vullo in memory of Jesse Laufer
Andrew Wagner
Dr. Zev Waldman
Ellen Walker in memory of Paul Walker Schaffel
Mark Walker in memory of Jim Bollensen
Cheryl Walsh
Nancy Walsh in memory of Andrew Nicholson
Frank Walter III & Marguerite Walter
Karen Warack in honor of the Leadership Team
Bruce Warner in memory of Jesse Laufer
T.S. Warner
James Watkins
Mark Watts
Barry & Stephenie Weakley
Elaine Webb
Joseph Weber
Beverly Weeks
Vicki Weinsetin in memory of Jesse Laufer
Shawn Weisfeld
The Weiss Foundation
John Whitaker
Gamunu Wijetunge
Timothy Wilczynski
Vincent Wilczynski▲
Henry (Hank) Wilde
Willett Family Foundation
Chris Willett
Michelle Williams
Vicky Williams
Sandi Willsey in honor of my son Colin R. Lemen, FIRST Scholarship recipient
Jeffrey Wilson in honor of Brandy Menzel
Jeffrey Wilson in honor of Lori J. Wilson
Jerry Wilson
Lee Wilson

Andrea Winegar
Andrew Witman
Chad Wittrock
Michael Woinsky in honor of Alan Woinsky
Pamela Wong
Christie Ann Woodman
Joshua Wright
Timothy Wright
David Wrobel
John Wrobel in memory of Frank Brand, Sr.
B.P. Wu
Trond Wuellner
Craig Yanks
Lester Yee
Joanne Zhang
Xi Zhang
Elizabeth Zimmer
Ryan Zimmer

2015 FIRST CHAMPIONSHIP SPONSORS

Presenting Sponsor



Program Sponsors

Energizer Holdings, Inc.
FedEx Corporation
Center for Energy Workforce Development (CEWD)
Google.org
Monsanto Company
NRG Energy, Inc.
United Technologies Corporation (UTC)
U.S. Air Force

FIRST Shipping Sponsor

FedEx Corporation

Sponsors

Abbott Fund
Bechtel Group Foundation
Belden Inc.
The Boeing Company
Booz Allen Hamilton, Inc.
BOSCH
The Coca-Cola Company
Comcast NBCUniversal
Dr. William H. Danforth
The Dow Chemical Company
Edward Jones Foundation
International Council on Systems Engineering (INCOSE)
Microsoft Corporation
Mouser Electronics, Inc.
Nidec Motor Corporation
NVIDIA Corporation
Patriarch Partners/I Am Jane
St. Louis Regional Chamber
Scotttrade, Inc.
Southwest Airlines
SpaceX
Trio Foundation of St. Louis
UL
Vulcan Spring and Mfg Co.
Wells Fargo Advisors

BART KAMEN SCHOLARSHIP FUND CONTRIBUTORS

John Abele■/Argosy Foundation
Frank DeLorenzo
Jay Duchin
Marcia Smith Fleres
Margaret Frankian
Bahi Ghazal
Tuan Hoang

Marc Hodosh▲
Robert Iles
Dean Kamen■
Kaplan Simons Family Foundation
George Lanigan in memory of Claire C. Toohey
Richard Lanigan in memory of Claire C. Toohey
Lloyd Lee
Lively Group
Minh Nguyen
Van Nguyen
Anne Ortwerth & Mary Gunter
Judith Peritz
Ethel Rubinstein
Dana & Kathy Seero
Linda Stone
Maureen Toohey
Gary● and Diane Tooker Family Foundation
Robert Tuttle■
Jim Utaski●
Josh Weston▲
Mr. & Mrs. Vincent▲ Wilczynski
Sandi Willsey

2015 FIRST ALLIANCES

American Society for Engineering Education (ASEE)
Automation Federation/ISA
Boys & Girls Clubs of America
Girl Scouts of the USA
MIT Alumni Association
National 4-H Council
National Center for Women & Information Technology (NCWIT)
National Parent Teacher Association (PTA)
National Robotics Week
Society of Hispanic Professional Engineers (SHPE)
Society of Women Engineers (SWE)
Yale Science & Engineering Alumni

2015 FIRST SCHOLARSHIP PROVIDERS

Platinum (\$500,000+)

Capitol Technology University
Clarkson University
Florida Institute of Technology
Michigan Technological University
Milwaukee School of Engineering
Olin College of Engineering (Franklin W.)
University of Advancing Technology
University of Rochester
U.S. Navy ROTC – St. Louis Recruiting District
Yale University

Gold (\$100,000-\$499,999)

Bart Kamen Memorial *FIRST* Scholarship Fund
Boston University
Lindenwood University
Merrimack College
Nipissing University
Northeastern University
Randolph College
Rensselaer Polytechnic Institute
Rochester Institute of Technology
Rose-Hulman Institute of Technology
Stevens Institute of Technology
SUNY Polytechnic Institute
Tulane University
University of Hartford
Webb Institute
Bucknell University
College of the Atlantic
Culinary Institute of America
Daniel Webster College
Drexel University
Embry-Riddle Aeronautical University - AZ
Embry-Riddle Aeronautical University - FL
Hudson Valley Community College
Illinois Institute of Technology
Instituto Tecnológico Autónomo de México (ITAM)
Kettering University
Lawrence Technological University
Worcester Polytechnic Institute

Silver (\$40,000-\$99,999)

Arizona State University
Bradley University
California State University Los Angeles/ Boeing
Case Western Reserve University
City College of New York
Fairleigh Dickinson University
Florida A&M University
Gates Corporation
Harvey Mudd College
Johnson & Wales University
Macquarie University
Marquette University
Massachusetts Institute of Technology (MIT)
McKendree University
Missouri University of Science and Technology
New Jersey Institute of Technology
Ohio State University
Oklahoma State University
Pace University
Pacific University
Raytheon Company
Robert Morris University
Seattle Pacific University

Temple University
University of Cincinnati
University of Iowa
University of Kansas
University of Minnesota Twin Cities
University of Portland
University of Saint Joseph Connecticut
University of South Carolina
University of Southern California
University of Texas Arlington
Vaughn College of Aeronautics and Technology
Virginia Commonwealth University (VCU)

Bronze (\$20,000-\$39,000)

Adelphi University
California University of Pennsylvania
Canadore College
Carleton University
Carnegie Mellon University
College for Creative Studies
Colorado State University
Columbus College of Art and Design
Eastern Washington University
Frank Minolli Foundation
Gordon College
Grand Valley State University
Hofstra University
Molloy College
Northwestern University
Rutgers University
St. Clair College
Sanghi Family Foundation
Southern New Hampshire University (SNHU)
Texas Tech University
University of Detroit Mercy
University of Illinois at Chicago
University of Maryland College Park
University of Massachusetts Lowell - Engineering
University of Massachusetts Lowell - Sciences
University of Washington
Washington University in St. Louis/Boeing
William Paterson University
York University

Brass (up to \$19,999)

American Petroleum Institute
ASME Auxiliary Inc.
Baker University
Boise State University
Central Washington University
DePaul University
Digipen Institute of Technology
Eagle Robotics
East Carolina University
Eastern Michigan University

Elbit Systems
Farmingdale State College
Ferris State University
George Fox University
Georgia Institute of Technology
Globe University
Hallmark University
Idaho State University
Indiana State University
Indiana University – Purdue University Indianapolis (IUPUI)
ITT Technical Institute
Kansas State University
Lake Superior State University
Maryville University
Mercer University School of Engineering & Technology
Metropolitan Community College - Business & Technology
Metropolitan Community College - Maple Woods
Mineral Area College
Montclair State University
Murray State University
New York Institute of Technology
New York University Polytechnic School of Engineering (NYU Poly)
NHTI, Concord's Community College
North Carolina Agricultural and Technical State University (A&T)
North Carolina State University
Northern Illinois University
Nuts, Bolts and Thingamajigs Foundation
Oregon Institute of Technology
Oregon State University
Pellissippi State Community College
Pennsylvania College of Technology
Pennsylvania State University
Phil Clancy Memorial Scholarship
Portland State University
Purdue University
Queen's University
Redstone College
Ryerson University
St. Louis Community College
Schoolcraft College
SMaRT Education
Society of Petroleum Engineers
Society of Women Engineers (SWE)
South Dakota School of Mines and Technology
Southern California Regional Robotics Forum (SCRRF)
Southern Methodist University
Southwestern Michigan College
Spring Arbor University
SUNY Potsdam
Texas A&M University Computer Science
Texas Instruments Incorporated
United States Naval Academy
University of Central Missouri

University of Connecticut
University of Massachusetts Amherst
University of Minnesota, Duluth
University of Mississippi
University of Missouri
University of Missouri - Kansas City
University of Nevada, Las Vegas
University of New Hampshire
University of New Hampshire Manchester
University of Ontario Institute of Technology (UOIT)
University of South Florida
University of Tennessee Knoxville
University of Texas at Austin
University of Texas at San Antonio
University of Toronto
University of Vermont
University of Waterloo
University of Windsor
University of Wisconsin, Madison
Velcro Industries
Washington State University, College of Agricultural, Human, and Natural Resource Sciences
Washington State University - Voiland College of Engineering and Architecture
Western Carolina University
Western University
Whitworth University
Xavier University
Youngstown State University

2014-2015 SEASON FIRST LEGO LEAGUE JR. SPONSORS

Program Sponsor



Top Team Sponsors

Sponsors in this section are listed in descending order starting with the Sponsor of the highest number of teams.

John Deere
National Defense Education Program (NDEP)
Rockwell Automation, Inc.
United Technologies Corporation (UTC)
Booz Allen Hamilton, Inc.
The Dow Chemical Company
Motorola Solutions Foundation

2014-2015 SEASON FIRST LEGO LEAGUE SPONSORS

Founding Partner



Global Sponsors



FIRST LEGO League Global Innovation Award presented by XPRIZE®

Founding Partner

XPRIZE®
In Cooperation with
Edison Nation
The United States Patent and Trademark Office

Partners in Innovation

Booz Allen Hamilton, Inc.
John Deere
LEGO® Education
Rockwell Collins, Inc.

Top Team Sponsors

(10 or more teams in 2014-2015)

Sponsors in this section are listed in descending order starting with the Sponsor of the highest number of teams.

National Defense Education Program (NDEP)
John Deere
Rockwell Collins, Inc.
Rockwell Automation, Inc.
Caterpillar Foundation
Leidos, Inc.
DC Public Schools
GE Healthcare
Booz Allen Hamilton, Inc.
Motorola Solutions Foundation
United Technologies Corporation (UTC)
GE Energy
Bechtel Group Foundation
General Motors Corporation
The Dow Chemical Company
Motorola Mobility Foundation
PTC, Inc.
TE Connectivity
SAIC
Teradata Corporation

Host Organizations and Championship Tournament Sponsors

Australia

Macquarie University
BAE Systems Australia
Bechtel Group Foundation
Cedars Christian College
Curtin University
Google.org
Grace Lutheran College
Granville Boys High School
King David School
LEGO® Education
Narrabeen Sports High School
NI

Northern Advanced Manufacturing Industry Group
Queensland University of Technology
Austria
HANDS on TECHNOLOGY e.V.
LEGO GmbH
Mellowmessage GmbH
Motorola Solutions Foundation
NI GmbH
SAP AG
Vision Components GmbH
Bahrain
King Hussein Foundation
Jubilee Center for Excellence in Education
Belgium
Stichting Techniekpromotie
3M Company
ASML
Avans Hogeschool
Deltion College
Discovery Center Continium
Fontys Hogescholen
Frencken
Haags Centrum voor Onderwijsbegeleiding
Hanze University Groningen
Heutink
Hogeschook Utrecht
Hogeschool Vives IWT (Belgium)
HZ University of Applied Sciences
IBM Corporation
ISW Poeldijk
Jet-Net
Katholieke Hogeschool Leuven (Belgium)
Kenniscentrum Bèta Techniek
The LEGO Group
NFGD
NI
POA Valleiregio
Prowise
Radboud Universiteit Nijmegen
Rijksuniversiteit Groningen
ROC Drenthe College
Rockwell Automation, Inc.
Saxion
Science Center Delft
Sluijs Management
Statoil
Stichting DOENK
Summa College
Techniek talent.nu
Technische Universiteit Delft
Technische Universiteit Eindhoven
Trudo Klokgebouw Eindhoven
Universiteit Leiden
Universiteit Twente
Universiteit Utrecht
Universiteit van Amsterdam

VOKA (Kamer van Koophandel) Limburg (Belgium)
Vrije Univesiteit Amsterdam
Wageningen Universiteit
YouTech
Brazil
SESI - Brazilian Social Services of Industry-National Department
ABC - Brazilian Science Academy
Colégio Eduardo Gomes (Primary and High School)
Federal Institute of Paraná
General Motors Company, Brazil
NI Brazil
OBR - Brazilian Robotics Olympics
Rockwell Automation, Inc., Brazil
SESI Regional Departaments (9): Amazonas, Bahia, Distrito Federal, Goiás, Minas Gerais, Paraná, São Paulo, Rio Grande do Sul, Rio Grande do Norte
ZOOM Education
Canada
Alberta
Alberta Youth Robotics Society
Association of Professional Engineers, Geologists and Geophysicists of Alberta
Association of Science and Engineering Technology
Edmonton Catholic Schools
City of Edmonton
Edmonton Economic Development
Newfoundland and Labrador
College of the North Atlantic, PPD Campus
Department of Business, Tourism, Culture and Rural Development (BTCRD) (Government of Newfoundland and Labrador)
Skills Canada Newfoundland and Labrador
Statoil
Verafin, Inc.
Nova Scotia
Acadia University
Community One
Connell Chrysler Dodge Jeep
Lockheed Martin Corporation
Long & McQuade
Michelin Canada
The Natural Sciences and Engineering Research Council of Canada (NSERC)
Nova Scotia Business Inc.
Nova Scotia Community Colleges (NSCC)
Pratt & Whitney Canada (PWC)
Province of Nova Scotia – Economic and Rural Development and Tourism
Province of Nova Scotia – Labour and Advanced Education
RBC Corporation (Royal Bank)
Ontario
Durham College
HexBugs
McMaster University
Government of Ontario

Ontario Power Generation
Qualcomm Incorporated
Synnex
University of Ontario Institute of Technology
University of Waterloo
Yves Landry Foundation

Québec
BMO Financial Group
Bombardier
Brault & Bouthillier
Commission Scolaire Beauce-Etchemins
Commission Scolaire de la Pointe-De-L'Île
Commission Scolaire de Montréal
Commission Scolaire Marguerite-Bourgeoys
CRSNG

Emplois Compétences
English-Montreal School Board
Fondation Joseph Armand Bombardier
Fondation Lucie et André Chagnon
General Electric Company (GE)
Groupe Canam
Manac
Ménard Family
City of Montreal
Réseau Réussite Montréal
Robotique *FIRST* Québec
Saputo
Université de Sherbrooke
Youth Fusion

Chile

Fundación SparkTalents
Bechtel Group Foundation
Inacap

China

Semia Limited
Bechtel Group Foundation
The Boeing Company, China
Xi'an Jiaotong-Liverpool University

Colombia

Fundación Global Arte Ciencia y Tecnología

Czech Republic

HANDS on TECHNOLOGY e.V.

Eduxe
LEGO GmbH
Mellowmessage GmbH
Motorola Solutions Foundation
NI GmbH
SAP AG
Vision Components GmbH

Denmark

FIRST Scandinavia
The Norwegian Directorate for Education and Training
The Norwegian Public Roads Administration
Norwegian Research Council
SKS
Statoil
Tekna

Dominican Republic

Fundación para el Desarrollo de las Ciencias y Tecnología

Design Studio, The Bold Look of Kohler
Familia León-Rivera

Egypt

Robotics, Technology and Human Resources Development Association

Ministry of Communication and Information Technology

Techno Future Egypt
Technology Innovation Entrepreneurship Center

Estonia

MTÜ Robotika

AHHAA
A.Le.Coq
Büroomaailm
Eformular
Energia Avastuskeskus
HARIDUS-JA TEADUSMINISTEERIUM
HASARTMÄNGUMAKSU NÕUKOGU
Hinnavaatlus OÜ
HITSA
Kaitseressursside Amet
KÕU

KUMA print
Nutilabor

ROBOMIKU
ROBOTEX

Saku Läte
Škoda Tallinn
Swedbank

TARTU ÜLIKOOL

Faroe Islands

FIRST Scandinavia

The Norwegian Directorate for Education and Training

The Norwegian Public Roads Administration
Norwegian Research Council
SKS

Statoil

Tekna

France

Association MEDIO Sciences Environnement
Aquitaine Robotics
Association Arcadie
Assomption Sainte Clotilde Bordeaux
Ville de Bordeaux
Conseil Général de Gironde
Conseil Général de la Nièvre
Le Cube (Centre de Création Numérique Grand Paris Seine Ouest)
ENSEIRB MATMECA (Ecole d'ingénieur)
ISTY (Institut des Sciences et Techniques des Yvelines)
Jeulin
Jeunes Sciences Bordeaux
LEGO® Education

Ville de Meudon
Ville de Nevers
Nièvre Numérique
Ville de Saint Etienne
Germany
HANDS on TECHNOLOGY e.V.
LEGO GmbH
Mellowmessage GmbH
Motorola Solutions Foundation
NI GmbH
SAP AG
Vision Components GmbH

Greece

EduACT
91.1FM
Alexander Innovation Zone S.A.
The American Consulate General in Thessaloniki
Aristotle University of Thessaloniki School of Philosophy and Education
AXON Global Education Network
BETA CAE Systems S.A.
e-Charity
Epi-Direct Leda Papadopoulou - Communication Experts

epiloges.gr

Ethnos Newspaper
FM100

Greek Rescue Team
Hellenic Petroleum S.A.

hello advertising
IEK AKMH - AKMI College
Inter Brokers - Interbrokers, Insurance Company
Interworks S.A.
Karfitsa.gr
Keridis Works Company

Kleemann
Municipality of Kordelio-Evosmou
Livemedia
Makedonia Newspaper
Makedonia TV
Ministry of Macedonia and Thrace
MLS

ΜΠΕΛΛΗΣ Κ. & ΣΙΑ O.E.
Nerit 102 FM
Olympia Electronics
THE P&M Printing Fashion Company
Municipality of Pilea-Chortiati
Print Xpress Company
Radio Thessaloniki
Region of Central Macedonia

Regional Solid Waste Management Association of Central Macedonia
Science Center and Technology Museum “NOESIS”
Seven
Studio 8 Photography
SUNSHINE 107.7

Municipality of Thessaloniki
Thessaloniki Concert Hall Organization
ThessPrint
TV100
Vikos Zagorochoria
ΧΡΩΜΑ FM 105.8
Youth Foundation of the Metropolis of Neapolis and Stavropolis
Υπουργείο Πολιτισμού, Παιδείας και Θρησκευμάτων (Hellenic Ministry of Culture, Education and Religious Affairs)
Πυλολαμπίδες στο κλουβί

Haiti

FEDUDEVH
FIRST Tech Challenge Team 6081 “i?robotics”
FIRST Robotics Competition Team 384 “Sparky”

Lakai Marie
LEGO Foundation

Hong Kong

Semia Limited
Hong Kong Youth Federation

Hungary

HANDS on TECHNOLOGY e.V.
LEGO GmbH

Mellowmessage GmbH
Motorola Solutions Foundation
NI GmbH
SAP AG

Vision Components GmbH

Iceland

FIRST LEGO League á Íslandi
Krumma
Nýherji
University of Iceland

India

India STEM Foundation
Caterpillar, Inc.
John Deere
LEGO Foundation
Techtronics Education

Indonesia

Mikrobot
ABC Alkaline
Axioo
Cerebrofort & Cerebrovit
Tunjungan Plaza

Israel

FIRST Israel
Bank Hapoalim
City of Dimona
Ha'Kfar Ha'Yarok
City of Hertzeliya
City of Jerusalem
City of Kfar Yona
Meitar Council
Misgav Council

City of Modiin– Makkabim – Reut
City of Nes Tziyona
City of Ra'anana
City of Rehovot
Robotec
Technion – Israel Institute of Technology
Tel-Aviv Yaffo Academic College
City of Tel Aviv Yaffo
World ORT
City of Yerucham

Italy

Fondazione Museo Civico di Rovereto
100-ONE
Apt di Rovereto
ART TEH (Almese - TO)
Caterpillar, Inc.
Istituto Don Milani
Media Direct srl
Montura
Polo Meccatronica Rovereto
UCIMU
Cfp G. Veronesi

Japan

FIRST Japan
Crefus Corporation
The Japan Society of Mechanical Engineers
LEGO® Education
Tokyo Institute of Technology

Jordan

King Hussein Foundation
Booz Allen Hamilton, Inc.
Jubilee Center for Excellence in Education

Republic of Korea

FEST (Feeling and Enjoying Science & Technology Organization)
C & M Broadcasting, Inc.
Dongseo Culture
FUNERS
LEGO® Education
UL Korea

Kuwait

King Hussein Foundation
Jubilee Center for Excellence in Education

Latvia

MTÜ Robotika
Argus RT SIA
U.S. Embassy in Riga, Latvia

Lebanon

Cedars Cultural School-Education and Technology Center
American University in Beirut (AUB)

Nestle

Lithuania

Robotikos Akademija
Baltic Orbis
INFOBALT
Ministry of Education, Malaysia

Luxembourg

Stichting Techniekpromotie
3M Company
ASML
Avans Hogeschool
Deltion College
Discovery Center Continium
Fontys Hogescholen
Frencken
Haags Centrum voor Onderwijsbegeleiding
Hanze University Groningen
Heutink
Hogeschook Utrecht

Hogeschool Vives IWT (Belgium)
HZ University of Applied Sciences
IBM Corporation
ISW Poeldijk
Jet-Net
Katholieke Hogeschool Leuven (Belgium)
Kenniscentrum Bèta Techniek
The LEGO Group
NI
NFGD

POA Valleiregio
Prowise
Radboud Universiteit Nijmegen
Rijksuniversiteit Groningen
ROC Drenthe College
Rockwell Automation, Inc.
Saxion
Science Center Delft
Sluijs Management
Statoil
Stichting DOENK
Summa College
Techniektalent.nu
Technische Universiteit Delft
Technische Universiteit Eindhoven
Trudo Klokgebouw Eindhoven
Universiteit Leiden
Universiteit Twente
Universiteit Utrecht

Universiteit van Amsterdam
VOKA (Kamer van Koophandel) Limburg (Belgium)
Vrije Universiteit Amsterdam
Wageningen Universiteit
YouTech

Malaysia

Sasbadi Holdings Berhad
Bechtel Group Foundation - Malaysia
CIMB Foundation
The Institution of Engineering and Technology (IET)
KDU University College
LEGO® Education
Majlis Amanah Rakyat (MARA)
Ministry of Education, Malaysia

Motorola Solutions Foundation
National Science Centre (MOSTI)
Penang Science Council
Politeknik Ungku Omar, Ipoh, Perak
State Education Departments
Taylor’s University
Telekom Malaysia Berhad
Universiti Teknologi MARA (UiTM), Tapah, Perak
Universiti Teknologi PETRONAS (UTP), Perak

Mexico

Explora, Descubre Y Crea, AC
General Motors Company, México
Instituto Tecnológico Autónomo de México (ITAM)
Instituto Tecnológico y de Estudios Superiores de Monterrey - Campus Toluca
MUTEC – Museo de Tecnología y Ciencia
Bárbara and Ignacio Navarro
Oxford School of English, A.C.
Promedici, S.A. de C.V.
Rockwell Automation, Inc.

Montenegro

Young Inventors of Montenegro
Municipality Bar
Municipality Bijelo Polje
Municipality Cetinje Domen
Elko Tim
Fleka
Mensa Montenegro
Ministry of Education, Government of Montenegro
Ministry of Labour and Social welfare, Government of Montenegro
Ministry of Science, Government of Montenegro
Neckom
Telenor

Netherlands

Stichting Techniekpromotie
3M Company
ASML
Avans Hogeschool
Deltion College
Discovery Center Continium
Fontys Hogescholen
Frencken
Haags Centrum voor Onderwijsbegeleiding
Hanze University Groningen
Heutink
Hogeschook Utrecht
Hogeschool Vives IWT (Belgium)
HZ University of Applied Sciences
IBM Corporation
ISW Poeldijk
Jet-Net
Katholieke Hogeschool Leuven (Belgium)
Kenniscentrum Bèta Techniek

The LEGO Group
NI
NFGD
POA Valleiregio
Prowise
Radboud Universiteit Nijmegen
Rijksuniversiteit Groningen
ROC Drenthe College
Rockwell Automation Inc.
Saxion
Science Center Delft
Sluijs Management
Statoil
Stichting DOENK
Summa College
Techniektalent.nu
Technische Universiteit Delft
Technische Universiteit Eindhoven
Trudo Klokgebouw Eindhoven
Universiteit Leiden
Universiteit Twente
Universiteit Utrecht
Universiteit van Amsterdam

VOKA (Kamer van Koophandel) Limburg (Belgium)
Vrije Universiteit Amsterdam
Wageningen Universiteit
YouTech

New Zealand

Kiwi FIRST
Academic Colleges Group
DMXking.com

Nigeria

CODERINA
National Information Technology Development Agency (NITDA)
SAP
University of Abuja

Norway

FIRST Scandinavia
The Norwegian Directorate for Education and Training
The Norwegian Public Roads Administration
Norwegian Research Council
SKS

Statoil
Tekna

Oman

King Hussein Foundation
Jubilee Center for Excellence in Education

Pakistan

STARfALL (Science and Technology Awareness-and Recognition for All)
GIFT University
LEGO Foundation
Robo Campus

Palestine

King Hussein Foundation

Jubilee Center for Excellence in Education

Peru

Wernher Von Braun IEP S.A.

PRONABEC - BECA 18

Philippines

FELTA Mutli-Media, Inc.

American Airlines/Cathay Pacific

Enchanted Kingdom

Implementing Agency - DepED - Department of Education

Intel Corporation

Quezon Science Interactive Center

Poland

HANDS on TECHNOLOGY e.V.

Akces

LEGO GmbH

Mellowmessage GmbH

Motorola Solutions Foundation

NI GmbH

SAP AG

Vision Components GmbH

Portugal

Evoluir21

ARABOT HI-FI, Lda.

Instituto Superior Técnico - Campus Taguspark

Qatar

King Hussein Foundation

Jubilee Center for Excellence in Education

Russia

Volnoe Delo Foundation

EN+ Group

GAZ Group

Singapore

Duck Learning

Canadian International School

IDA Labs

Infocomm Development Authority of Singapore (IDA)

Slovakia

HANDS on TECHNOLOGY e.V.

Anasoft

Eduxe

LEGO GmbH

Mellowmessage GmbH

Motorola Solutions Foundation

NI GmbH

SAP AG

Vision Components GmbH

Slovenia

Zavod Super Glavce

EFAFLEX INŽENIRING, d.o.o., Ljubljana

Epilog d.o.o.

HALCOM Group

L-TEK d.o.o.

Metrel d.d.

Mint International House d.o.o

Rotary Club Ljubljana Tivoli

SAP d.o.o.

Yaskawa Slovenija d.o.o.

South Africa

Tshwane University of Technology

Cape Town Science Centre

KwaZulu Natal Science Centre

Nelson Mandela Metropolitan University

SAP South Africa

Sci-Bono Discovery Centre

TSH Bonisa

University of South Africa

Spain

Fundación Scientia

Fundación Telefónica

GMV

Sweden

FIRST Scandinavia

The Norwegian Directorate for Education and Training

The Norwegian Public Roads Administration

Norwegian Research Council

SKS

Statoil

Tekna

Switzerland

HANDS on TECHNOLOGY e.V.

Educatec

LEGO GmbH

Mellowmessage GmbH

Motorola Solutions Foundation

NI GmbH

SAP AG

Vision Components GmbH

Taiwan

K Kingdom Inc.

E SUN ROBOT ASSOCIATION

Microsoft Corporation

National Science and Technology Museum

NI

PTC, Inc.

Thailand

Gammaco (Thailand) Co., Ltd.

Bechtel Group Foundation

CPRAM Co., Ltd.

LACTASOY Co., Ltd.

Tunisia

King Hussein Foundation

Jubilee Center for Excellence in Education

Turkey

Bilim Kahramanlari Dernegi (Science Heroes Association)

Abalioglu

Allianz

Booz Allen Hamilton, Inc.

Borusan

BSH

Bursa Teleferik

Caykur

Cocukus

Damla

Demirer Holding

DRC

FARPLAS

FMB

Galeri Zilberman

Hacettepe University

HDI Insurance

Humanera (Transearch)

IBM Corporation

Incekara Holding

Inci Aku

Innova

Intel Corporation

Ipragaz

Istanbul Kultur University

The LEGO Group

Limak

Marmassitance

Opel

Orta Anadolu

Ozel Maya Okullari

Philips

Pinar

PR Istanbul

Prfit

Promar Textiles

Social Innovation Center (SIM)

SomaDA

Teknokta

UBS

Uludag Robot Toplulugu

Uludag University

Yasar University

Ukraine

Prolego Ltd.

Google.org

LEGO Foundation

LEGO Ukraine LLC

United Kingdom & Ireland

The Institution of Engineering and Technology (United Kingdom & Ireland)

American School in London

Bechtel Group Foundation

Callington Space Centre

Caterpillar, Inc.

Dynamic Earth

Engineering Education Scheme Wales

EPSRC Centre for Innovative Manufacture in Intelligent Automation

Ford Motor Company

Galway Education Centre

Gatwick Airport

Glasgow Science Centre

HP Labs

IWM Duxford

Lambdajam

Learn It

Loughborough University

Marden CLC

NI

OpenZone CLC

Parkair Systems

Perkins/Caterpillar Foundation

Portsmouth University

Queen Mary University London

REACT Foundation

Royal Academy of Engineering

SAP

Satrosphere Science Center

Sheffield Hallam University

STFC Daresbury Laboratory

Teesside University

University of Birmingham

University of Bradford

University of Brighton

University of Coventry

University of Kent

W5

Walt Disney Company

Wessex Setpoint

Winchester Science Centre

Adventist Robotics League

North American Division Office of Education
Adventist Health

Sacramento Adventist Academy

Southern Adventist University

Walla Walla University School of Engineering

Alabama

Association for Unmanned Vehicle Systems
International (AUVSI)

FIRST Robotics Competition:
Team 538 “The Arabian Knights”
Team 3319 “Grissom High School”

Grissom High School

Alaska

Alaska Airlines

Alaska Communications

Alaska Development Corporation

Anchorage School District

BP Corporation North America, Inc.

Fairbanks North Star School District

GCI

Juneau Economic Development Council

Lower Kuskokwim School District

University of Alaska Anchorage, School of Engineering

University of Alaska Fairbanks, College of Engineering and Mines

Arizona

Arizona State University, Ira A. Fulton Schools of Engineering

General Motors Company Desert Proving Ground

Intel Corporation

LEGO Foundation

Raytheon Company

SAIC

Time Warner Cable

Gary ● and Diane Tooker Family Foundation

Arkansas

Arkansas *FIRST* Incorporated

Arkansas State University Mountain Home

Baxter Bistro

Baxter Healthcare Corporation

Harding Academy

HEBCO, Inc.

Hot Springs Intermediate School

Mountain Valley Spring Water

The Science and Technology Group, Inc.

Springdale High School

Twin Lakes McDonald’s

University of Arkansas College of Engineering

California – Central

Clovis Unified School District

Derrel’s Mini Storage

Fig Garden Rotary

Anita Meffley

Visual Impact Technologies, Inc.

California – Los Angeles

Chaffey College

Girl Scouts of Greater Los Angeles

La Canada Unified School District

Milken Schools

Orcutt Union School District

Rockwell Collins, Inc.

Temple City School District

California – Northern

Aragon High School

Google.org

Inderkum High School

Intel Corporation

Playing At Learning

Sobrato High School

California – Southern/LEGOLAND®

Applied Medical

LEGOLAND® California

National Defense Education Program (NDEP)/
SPAWAR

OpenProjectsandApps.org

SPAWAR System Command

SPAWAR Systems Center Pacific

Time Warner Cable

ViaSat, Inc.

Colorado

Arrow Electronics

Broadband Video

ColoradoGives.org

Computer Explorers

Denver Museum of Nature & Science

Gates Corporation

InterCall

Lockheed Martin Corporation

LunarG

Nan Desu Kan

Wade & Katherine Sutton

Technetronic Solutions, Inc.

Trace3

TerumboBCT

United Launch Alliance (ULA)

Connecticut

Buck Foundation

Dominion Millstone Power Station

Enfield School System

FIRST Robotics Competition:

Team 155 “The Technonuts”
Team 173 “RAGE”
Team 175 “BUZZ”
Team 230 “GaelHawks”
Team 236 “The Techno Ticks”
Team 558 “Elm City Robo Squad”
Team 1071 “Team Max”

Greenwich Academy

Ingenuity NE

LEGO Corporation of America

Northeast Utilities Foundation

Pfizer Corporation

Delaware

Delaware State University

DuPont

The DuPont Chapter of Sigma Xi

First State Robotics

Honda Foundation

Salem Community College

Society of Women Engineers (SWE)

United Way

Florida

FIRST Robotics Competition:

Team 86 “Team Resistance”
Team 180 “SPAM”
Team 233 “The Pink Team”
Team 386 “Voltage”
Team 801 “Horse Power”
Team 1251 “TechTigers”
Team 1369 “Minotaur”
Team 1592 “Bionic Tigers”
Team 1902 “Exploding Bacon”
Team 3932 “Dirty Mechanics”
Team 4013 “Clockwork Mania”

GE Volunteer Network

Rockwell Collins, Inc.

SAIC

United Launch Alliance (ULA)

Walt Disney World Design & Engineering

Georgia

The Boeing Company

Georgia Tech Center for Education
Integrating Science, Mathematics &
Computing (CEISMIC)

Georgia Tech Research Institute (GTRI)

Georgia Tech School of Electrical &
Computer Engineering (ECE)

Phillips 66

Shell

Women in Electrical & Computer
Engineering (WECE)

Guam

Andersen Middle School

Guam Department of Education

Micronesia Mall

St. Paul

The Schreier-Edison Foundation
Society of Petroleum Engineers - Delta Section
Tulane University
University of New Orleans
Maine
Maine School of Science and Mathematics
Robotics Institute of Maine
University of Maine, College of Engineering
Maryland
BAE Systems
Booz Allen Hamilton, Inc.
Northrop Grumman Corporation
Rockwell Collins, Inc.
Massachusetts
Raytheon Company
Worcester Polytechnic Institute
Michigan
FCA Foundation
FCA US LLC
FIRST in Michigan
Ford Motor Company
General Motors Company
Minnesota
3M Foundation
Boston Scientific Corporation
H.B. Fuller Foundation
Magenic
Merchant & Gould
St. Jude Medical Foundation
Mississippi
Mississippi Power Education Foundation
U.S. Army Engineer Research and Development Center
Missouri – Eastern MO – St. Louis
ABNA Engineering, Inc.
Afton Chemical Corporation
John S. & Natalie P. Alberici
Avnet
Harry Baker
Cooper Bussman
Diversified Payment Solutions
The Doerr Family
Electrical Connection
Emerson
Employees Community Fund of The Boeing Company, St. Louis
Gateway to Innovation (G2I)
Innoventor, Inc.
ITT Technical Institute
James Mulligan Printing
Dr. & Mrs. Ernest G. Jaworski
Laboratory Robotics Interest Group
Lee Foundation
Lindbergh School District
Lindenwood University
Carol B. Loeb
Maritz
Maryville University
MasterCard Worldwide

McKendree University
MICDS
Midwest Laboratory Robotics Interest Group
Missouri University of Science and Technology
Parks College of Engineering, Aviation and Technology
The Pennington Family
Ranken Technical College
Kathie Reuter
Jerry & Peggy Ritter
Rockwell Automation, Inc.
The Saigh Foundation
St. Charles Community College
St. Louis Cardinals Care Foundation
St. Louis Community College
Saint Louis Science Center
Saint Louis University
The Seeser Family
Siemens Corporation
Southeast Missouri State University
Spoehrer Family Foundation
Technology Partners, Inc.
U-Gas Convenience Stores
University City School District
U.S. Air Force
U.S. Army
Washington University in St. Louis Engineering
The Wolfe Family
Missouri – Columbia
Missouri 4-H Robotics
Missouri 4-H Center for Youth Development
MORENET
MU College of Education
MU College of Engineering
Montana
Advanced Electronic Designs
American Computer Museum
Billings Public Schools
ExxonMobil Foundation
Montana State University - College of Engineering
Montana State University - Office of the Provost
Montana Tech
M.J. Murdock Charitable Trust
Oracle
Verizon Wireless
Nebraska
Nebraska 4-H Foundation
Time Warner Cable
University of Nebraska-Lincoln Extension
Nevada
FIRST Nevada
Garfield Family
IBM Software Group
Knights of Pythias
Micromanipulator, Carson City
National Security Technology, LLC
Partners for Community Inc.
Republic Services

Rich, Wightman & Company
Society of Women Engineers (SWE)
New Hampshire
BAE Systems
Nashua High School South
New Jersey
County College of Morris
Mount Olive Board of Education
Rockefeller Group Development Corporation
Siemens Diagnostics Products
New Mexico
Bricks & Minifigs
Evaluation
General Mills Albuquerque Plant
Lockheed Martin/Sandia National Laboratories
New Mexico Museum of Natural History and Science
Northrop Grumman Corporation
Office Depot/Office Max
OGB Millworks
New York – Finger Lakes
University of Rochester
Valeant
Wegmans
Xerox Corporation
New York – Long Island
Bank of America - Andy Margolin
Brookhaven National Laboratory
Central Islip Public Schools
Connetquot School District
LEGO® Education
Longwood Central School District
LuHi Summer Camp Programs
Mineola Public Schools
Karen Newman
Park Shore Country Day Camp
Plainview-Old Bethpage School District
Sideboard Computers
Sir Speedy – Plainview
Jeffrey Stern, Attorney
Vera Bradley - Walt Whitman Mall
New York – Mid-Hudson
Adva Optical Networks
IBM Corporation
IEEE Mid-Hudson Section
International *FIRST* LEGO League
New York – New York City
AB
Bloomberg L.P.
Consolidated Edison Company of New York, Inc.
Michael Dubno▲
Goldman Sachs Group, Inc.
Google.org
Pershing Square Foundation
Siegel Family Endowment
Two Sigma Investments, LLC
New York – Potsdam
Adirondack Energy

BAE Systems
Clarkson University
National Grid
Northern Machining
PPC: A Belden Brand
St. Lawrence-Lewis BOCES
Time Warner Cable Company: Connect a Million Minds
U.S. Air Force
New York – Utica
BAE Systems
Black River Systems Company Inc.
Hitechnic-Dataport Systems
Research Associates of Syracuse
SUNY Polytechnic Institute
Trenton Technology, Inc.
North Carolina
Duke Energy
North Carolina Agricultural and Technical State University (A&T), College of Engineering
TE Connectivity
North Dakota
Advanced Engineering and Environmental Services, Inc. (AE2S)
Bobcat Company
EAPC Architects & Engineers
Greater Grand Forks Convention and Visitors Bureau
HB Sound & Light
John Deere
Minnkota Power Cooperative, Inc.
Otter Tail Power Company
S&S Promotional Group Inc.
University of North Dakota College of Engineering and Mines
University of North Dakota Memorial Union
Whalen's Moving & Storage
Xcel Energy
Ohio
ASME - Dayton Section
Holiday Inn - Fairborn
The Ohio Educational Outreach Foundation
Rockwell Automation, Inc.
The Wright State University
The Wright-Patterson Air Force Base Educational Outreach
Oklahoma
AT&T, Inc.
The Chickasaw Nation
Mike Hoy, Mobile DJ
Oklahoma State University, College of Engineering, Architecture and Technology
Oregon
Bonneville Power Administration
Electro Scientific Instruments, Inc.
FEI Company
Garmin
Google Data Centers Grants Fund of Tides Foundation

IBM Corporation
Intel Corporation
Oregon Nanoscience and Microtechnologies Institute
Oregon University System
PH Tech
Portland Community Media
Rockwell Collins, Inc.
Techatronix
Timbercon
Vernier Software & Technology
Vista Masonic Lodge #215
Pennsylvania – Northwest
Little Caesars
Eriez Magnetics
Penn State Behrend - Youth Education Outreach Office
Pennsylvania – Southeast
Archbishop Wood High School
Central High School
Downingtown Area Robotics
The Franklin Institute
Girl Scouts of Eastern Pennsylvania
Hatboro-Horsham School District
The Haverford School
Owen J. Roberts School District
The School District of Philadelphia
Springside-Chestnut Hill Academy
Patton Middle School
University of Pennsylvania - GRASP Laboratory
Pennsylvania – Southwest Central
CBM - Business Machines
Community Foundation for Alleghenies
Galliker Dairy Company
Goodwill Industries of the Conemaugh Valley
Greater Johnstown Career and Technology Center
Lift Johnstown
Westmont Hilltop School District
Pennsylvania – West
BrainSTEM Learning
Carnegie Mellon's Robotics Academy
NXT Innovations
Robomatter, Inc.
Puerto Rico
Holsum
Liberty
Metro EDP University
Rhode Island
Active Data Solutions
AIR 4-H
All Saints STEAM Academy
Bryant University/ RI NSF EPSCoR
Dr. Edward A. Ricci Middle School
Humanity Centered Robotics Initiative at Brown University
IEEE Providence Section
Igus, Inc.
Kickemuit Middle School
David Livingston

Narragansett Pier Middle School
National Grid
Navy Federal Credit Union
NE FIRST
New England Institute of Technology
Roger Williams University
SAIC
Salve Regina University
Textron Charitable Trust
South Carolina
LEGO Foundation
SAIC
Society of Women Engineers (SWE)
Space Naval Warfare Systems Center Atlantic
South Dakota
Augustana College
Block Productions
Creative Kindling
Healthy Family/Healthy Youth, Pierre SD
Sioux Falls Public Schools
South Dakota Discovery Center
South Dakota Robotics Association
South Dakota School of Mines
South Dakota Space Grant Consortium
Tennessee - East
Oak Ridge Associated Universities
Tennessee Tech University
Tennessee Valley Authority (TVA)
UT-Battelle
Tennessee - West
Institute of Electrical and Electronic Engineers (IEEE)
Smith & Nephew
Tennessee Society of Professional Engineers (TSPE)
Tennessee Valley Authority (TVA)
University of Memphis
Texas – Alamo/San Antonio
Akimeka
CPS Energy
Frost Bank
Lockheed Martin Corporation
Rackspace Hosting
Time Warner Cable
Valero
Texas – Central/Austin
Dell, Inc.
Freescale
NI
Panera Bread Co.
Penske
Silicon Labs
Skillpoint STEM Council
Spansion
Tokyo Electron
Texas – North/Dallas
ExxonMobil Corporation
Lockheed Martin Corporation
Perot Museum of Nature and Science

Rockwell Collins, Inc.
Texas – South/Houston
University of Houston
Texas – Southwest/El Paso
El Paso STEM Foundation
Ft. Bliss – Brigade Modernization Command (BMC)
IEEE EP Professional Section
IEEE RAS Student Chapter
National Aeronautics and Space Administration (NASA)
NI
Utah
Boart Longyear
IM Flash Technologies
Lund Foundation
Gary & Nancy Schmitt
STEM Action Center
University of Utah
Utah Education Network
Utah Educational Savings Plan
Verizon Wireless
Williams
Virginia/DC
Booz Allen Hamilton, Inc.
Industrial Medium Software
James Madison University
College of Education
College of Integrated Science and Technology
College of Science and Mathematics
School of Engineering
Leidos, Inc.
Rockwell Collins, Inc.
SAIC
The United States Patent and Trademark Office
Turning Points Software
West Virginia
Cherie Bharti
Fairmont State University, College of Science and Technology
NASA IV&V Robotics Alliance Project
ParMar Stores
Thrasher
West Virginia Higher Education Policy Commission, Division of Science and Research
West Virginia Space Grant
Wisconsin
Bemis
Plexus
Rockwell Automation, Inc.
Wyoming
Casper Area Convention Bureau
City of Casper
Casper College
Central Wyoming Board of Cooperative Educational Services
ConocoPhillips Company
Greiner Motor Company
Natrona County Recreational Joint Powers Board

Natrona County School District
Nobe, Inc. Screenprinting & Embroidery
Pepsi
Anita Pinkham
Yemen
King Hussein Foundation
Jubilee Center for Excellence in Education

**2014-2015 SEASON
FIRST TECH CHALLENGE
SPONSORS**

Official Program Sponsor



CAD and Collaboration Sponsor



Top Team Sponsors

(10 or more teams in 2014-2015)

Sponsors in this section are listed in descending order starting with the Sponsor of the highest number of teams.

Alcoa
PTC, Inc.
Rockwell Collins, Inc.
National Defense Education Program (NDEP)
The Boeing Company
John Deere
Rockwell Automation, Inc.
Leidos, Inc.
Abbott Fund
Motorola Solutions Foundation
Bechtel Group Foundation
GE Energy
United Technologies Corporation (UTC)
The Dow Chemical Company
NRG Energy, Inc.
Teradata Corporation
Booz Allen Hamilton, Inc.
Caterpillar Foundation
TE Connectivity
Best (Picatinny)
Renasas
SAIC
Rookie Team Grantors
Argosy Foundation
Center for Energy Workforce Development (CEWD)
DEKA Foundation
FedEx Corporation
The LEGO Group
United Therapeutics Corporation
Tournament Sponsors
Australia
Bechtel Group Foundation
Macquarie University
NI
Canada
Alberta
Husky Energy École Maurice-Lavallée
Conseil scolaire Centre-Nord

Central and Eastern Europe

Central and Eastern European School Association
NOEN, a.s.
PTC, Inc.
China
Bechtel Group Foundation - China
Beijing Ministry of Education
The Boeing Company, China
Caterpillar Foundation, China
Chongqing University
NI
PTC, Inc.
Qinghua University
Qualcomm Incorporated
Shenzhen Museum of Science and Technology
South China Institute of Technology
Southeastern University
Tongji University
France
Fondation partenariale Grenoble INP
Fontaine
Grenoble INP
Grenoble-Alpes Metropole
NI
PTC, Inc.
Région Rhône Alpes
Germany
Heinz Nixdorf Museums Forum Paderborn
Novelis
PTC, Inc.
India
Bechtel Group Foundation
Caterpillar Foundation
John Deere
PTC, Inc.
Techtronics Education (India), Ltd.
United Technologies Corporation (UTC)
Republic of Korea
C & M Broadcasting, Inc.
FUNERS
Novelis
Qualcomm Incorporated
U.S. Embassy Seoul
Mexico
Centro Nacional de Actualizacion Docente
Fundación Azteca de Grupo Salinas
Fundación Televisa
Instituto Tecnológico Autónoma de México (ITAM)
Rockwell Automation, Inc.
Secretaria de Economía
Secretaría de Educacion Publica

Netherlands

EHV365 (City of Eindhoven)
Fontys University
KMWE
PTC, Inc.
New Zealand
ACG Strathallan
Kiwi *FIRST*
Russia
Agency for Strategic Initiatives
EN+ Group
GAZ Group
Russian Federal Agency of Youth Affairs
Volnoe Delo
South Africa
Benchoff South Africa
Burkett South Africa
Tshwane University of Technology
Vega South Africa
Taiwan
K Kingdom Inc.
NI
United States
FIRST Tech Challenge Super-Regional National Sponsors
Center for Energy Workforce Development (CEWD)
Rockwell Collins, Inc.
East Super-Regional Championship
Rockwell Collins, Inc.
Center for Energy Workforce Development (CEWD)
Kerith Foundation
Lockheed Martin Corporation
Rockwell Collins, Inc.
North Super-Regional Championship Presented by Rockwell Collins, Inc.
Center for Energy Workforce Development (CEWD)
Greater Des Moines Partnership
John Deere
Kinze Manufacturing
Rockwell Collins, Inc.
University of Iowa College of Engineering
South Super-Regional Championship
AKIMEKA
Booz Allen Hamilton, Inc.
Center for Energy Workforce Development (CEWD)
CPS Energy
Graebel Van Lines
Hallmark University
NI
Prism Technologies Group
Rackspace

Rockwell Collins, Inc.
SASTEMIC
Tesoro Corporation
Texas Workforce Commission
Toyota Motor Manufacturing Texas
University of Texas at San Antonio
U.S. Air Force
U.S. Navy
Whataburger
West Super-Regional Championship Presented by Google.org
Center for Energy Workforce Development (CEWD)
Google.org
Northrop Grumman Corporation
Playing At Learning
Rockwell Collins, Inc.
Alaska
Alaska Airlines
Alaska Communications
Alaska Development Corporation
Anchorage School District
BP Corporation North America, Inc.
Fairbanks North Star School District
GCI
Juneau Economic Development Council
Lower Kuskokwim School District
North Slope Borough School District
University of Alaska Anchorage, School of Engineering
University of Alaska Fairbanks, College of Engineering and Mines
Arizona
Alcoa Foundation
Bioscience High School
Cesar Chavez High School
Coconino High School
Estrella Foothills High School
Findlay Toyota
FIRST Robotics Competition Team 2486 "CocoNuts"
FIRST Tech Challenge:
Team 322 "SciTech"
Team 2844 "Valley X"
Team 3928 "AstroNuts"
Team 5132 "AHERT Ravens"
Team 5138 "AHERT Ravens"
Team 5661 "EFHS Wolves"
Team 6422 "Green Dragons"
Manual School
Arkansas
Arkansas *FIRST* Incorporated
Energy
FIRST Robotics Competition Team 16 "Bomb Squad"
McDonald's: Mountain Home
Mountain Home Public Schools
Twin Lakes Community Foundation
California, Los Angeles
Rockwell Collins, Inc.

California, Northern
Intel Corporation
Playing At Learning
Colorado
Adams County School District
Ball Corporation
Colorado Cotton Mine
Colorado Mountain College
Colorado STEM Education
Douglas County School District
Google.org
Krispy Kreme Donuts
LAUNCH 4 Education
Mimi's Cafe
Office Depot
Prospect Ridge Academy
PTC, Inc.
Sam's Club
Solicon Technologies
Starbucks
United Launch Alliance (ULA)
Weld RE-4 District
Wolf Robotics
Connecticut
Anonymous
Barnet Associates LLC
Greens Farms Academy
Greenwich Academy
HomeVision Group
Loomis Chaffee School
Northeast Utilities Foundation
Planet Pizza
Pro Shop Solutions
Ridgefield Screen Printing
Delaware
Agilent
Axalta Coating Systems
Delaware State University
DuPont CCRE
DuPont Engineering
First State Robotics
Honda Foundation
Florida
Rockwell Collins, Inc.
Saint Leo University
Tampa Bay Robotics Foundation, Inc.
Georgia
Alcoa
Cisco Systems, Inc.
Georgia *FIRST* Robotics
Kennesaw State University
Mount Paran Christian School
Southern Polytechnic University
Hawai'i
Ala Moana Hotel
Aston Hotels and Resorts
BAE Systems
Booz Allen Hamilton, Inc.
City Mill

Clear Channel
FedEx Corporation
Hawai'i Academy of Science
Hawai'i Self Storage
Matson
McDonald's
Midweek
MW Group, Ltd.
Northrop Grumman Corporation
Oceanic Time Warner Cable
Star Advertiser
Starn, O'Toole, Marcus & Fisher
University of Hawai'i
Idaho
Micron Foundation
University of Idaho, College of Agricultural & Life Sciences Extension 4-H
University of Idaho Support Services
Illinois
Baxter International, Inc.
FIRST Illinois Robotics
Google.org
Motorola Solutions Foundation
Navistar
Indiana
4-H
Indiana Virtual Professionals
FIRST Robotics Competition:
Team 135 "Penn Robotics"
Team 1741 "Red Alert Robotics"
Iowa
The College of Engineering at the University of Iowa
Des Moines Partnership Alliance
Iowa Governors STEM Advisory Council
John Deere
Kinze Manufacturing
Rockwell Collins, Inc.
Kentucky
Alcoa Foundation
AMTEC
Domino's Pizza
Domtar
Owensboro Community and Technical College
Time Warner Cable
Maryland
American Society of Mechanical Engineers
Capitol Technology University
Community Foundation of Howard County
General Dynamics Advanced Information Systems
Johns Hopkins University Applied Physics Lab
Leidos, Inc.
Microsoft Corporation
Rockwell Collins, Inc.
UPS Store 847
Massachusetts
Andover High School

Arlington High School
Draper Laboratory
Lexington High School
Milton Public Schools
MIT Lincoln Laboratory
Needham High School
PTC, Inc.
Ursuline Academy
Michigan
Applied Manufacturing Technologies
Comau
Consumers Energy
Ford Motor Company
General Electric Aviation
General Motors Company
Gorman's
PTC, Inc.
State of Michigan Dept. of Education
Minnesota
Boston Scientific Corporation
St. Jude Medical Foundation
Stratasys
University of Minnesota College of Science and Engineering
Mississippi
Copiah-Lincoln Community College
Delta Health Alliance
Energy - Mississippi
University of Mississippi Center for Mathematics and Science Education
University of Mississippi Provost Office
University of Mississippi School of Education
University of Mississippi School of Engineering
Missouri
ABNA Engineering
APWA – American Public Works Association
Bishop DuBourg High School
Black & Veatch
Blue Scope
Burns & McDonnell
Camdenton School District
Cerner
Destination St. Louis
The Doerr Family
DST Systems
Emerson
Employees Community Fund of The Boeing Company, St. Louis
Garmin
Gateway to Innovation (G2I)
Girl Scouts of Eastern Missouri
Honeywell International Inc.
James Mulligan Printing
KCPL
Marion Kauffman Foundation
Maryville University
Mercer
Metropolitan Community College Business & Technology

MICDS
Missouri University of Science and Technology
MRI Global
Partners for Progress of Greater St. Charles
Ranken Technical College
Kathie Reuter
River City Robots
Rockwood School District
Rolla School District
St. Charles Community College
St. Charles West High School
St. Louis Community College Foundation
St. Louis Community College – Florissant Valley
St. Louis Community College – Forest Park
St. Louis Community College – Meramec
St. Louis Convention and Visitors Commission
St. Margaret of Scotland
Southeast Missouri State University
UMKC - School of Computing and Engineering
University City School District
U.S. Engineering
VML
The Wolfe Family
Montana
Advanced Electronic Designs
American Computer Museum
Billings Public Schools
ExxonMobil Foundation
Montana Space Consortium
Montana State University - College of Engineering
Montana State University - Office of the Provost
Montana Tech
Oracle
Verizon Wireless
Nebraska
Nebraska 4-H Foundation
Time Warner Cable
University of Nebraska - Lincoln College of Engineering
University of Nebraska - Lincoln 4-H Extension
Nevada
FIRST Nevada
General Electric Company (GE)
H&J Hoppert
Jensen Precast Metaltech
Paul MacDowell
National Security Technology, LLC
Northwest Career & Technical Academy
Rich, Wightman & Company
University of Nevada, Las Vegas, College of Engineering
West Career and Technical Academy
Kim Womack

New Jersey

BAE Systems
PSEG Foundation

New York – Hudson Valley

The Albany Academies
General Electric Company (GE)
Kennedy Catholic High School
Pace University Athletics Department
Seidenberg School of Computer Science and Information Systems at Pace University
St. John Fisher College
SUNY Polytechnic Institute
Sylvan Learning
Xerox Foundation
Yonkers Riverside High School

New York - New York City

AB
Bloomberg L.P.
Con Edison
Goldman Sachs Group, Inc.
Google.org
News Corp
Siegel Family Endowment

New York - Potsdam

Adirondack Energy
BAE Systems
Clarkson University
National Grid
New York Power Authority
Northern Machining
PPC: A Belden Brand
St. Lawrence-Lewis BOCES
Time Warner Cable Company: Connect a Million Minds
U.S. Air Force

North Carolina

TE Foundation
Shell Foundation

North Dakota

AE2S Engineering
Bartlett and Engineering
Bismarck Bombshellz Roller Derby Team
Bismarck Public Schools Career Academy
Bobcat/Doosan
KLJ Engineering
Missouri River Education Cooperative Succeed 2020 Grant
ND Department of Transportation Engineers
NISC
North Dakota Career and Technology Education Department
North Dakota State Engineering Department

Ohio

Cincinnati Bell
GE Aviation
Great Oaks Institute of Technology and Career Development
iSPACE, Inc.

Procter & Gamble
Toyota Motor Engineering & Manufacturing North America

Woodward Trust

Oklahoma
National Aeronautics and Space Administration (NASA)
Southwestern Oklahoma State University
Southwestern Oklahoma State University Foundation
Weatherford Oklahoma City Council (Hotel Motel Commission)

Pennsylvania

California University of Pennsylvania, California and Canonsburg
Central High School
CMU National Robotics Engineering Center
Dallastown Intermediate School
Emmaus High School
FIRST Robotics Competition:
Team 341 “Miss Daisy”
Team 225 “TechFire”
Freire Charter High School
Google Community Foundation
Millersville University
Montgomery County Community College
Mt. St. Joseph Academy
Oxford Area High School
Pennsylvania State University – York
Peters Township Middle School
Shady Side Academy
Temple University
University of Scranton
Wissahickon High School
Wissahickon Middle School

Rhode Island
Providence Engineering Society

Texas – Alamo

Akimeka
Alamo Colleges - Northwest Vista College
CPS Energy
Lockheed Martin Corporation
Rackspace Hosting

Texas – Arlington

SIM-DFW (Society for Information Management – DFW)
Rockwell Collins, Inc.
University of Texas at Arlington College of Engineering

Texas – Houston

Hamshire Fannet ISD
NASA Johnson Space Center
Northland Christian School
San Jacinto College
Texas Workforce Commission

Texas – Lubbock

Abell-Hangar Foundation
Anonymous Donor
ASME - Petroleum Division
Frenship High School

Texas Tech University
Edward E. Whitacre Jr.
College of Engineering

Texas Tech University Equity & Community Engagement Division of Institutional Diversity

Texas Tech University Office of the Provost

Utah

Carl D. Perkins Grants
Hill Air Force Base STEM
STEM Action Center

Weber State University College of Engineering, Applied Science & Technology

Vermont

University of Vermont

Virginia

Battlefield High School
Bechtel Group Foundation
Best Buy Foundation
Boston Scientific Corporation
Capital One Foundation
CapTech
CNBMD

Consol Energy

Dominion

GEICO

General Dynamics Advanced Information Systems

Genworth Foundation

James Monroe High School

Lindner Foundation

Lockheed Martin Undersea Systems

Micron Foundation

Norfolk State University

Orange County High School

PTC, Inc.

Rockwell Collins, Inc.

St. Christopher’s School

Southwest Virginia Community College

STARS

T-Cup

Terra Tech Engineering Services

Traditional Screenprinting

Two-Way Radio

U.S. STEM Foundation

University of Virginia School of Engineering

VCU School of Engineering

Wisconsin

Rockwell Automation, Inc.
University of Wisconsin – Milwaukee College of Engineering & Applied Science

Wyoming

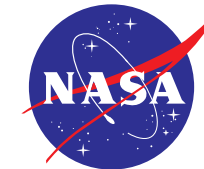
Casper College
Central Wyoming BOCES
Greiner
Natrona County School District
NCS D #1
Nobe, Inc. Screenprinting & Embroidery
Pepsi

A list of **FIRST Tech Challenge Team Sponsors** is available online at www.firstinspires.org/robotics/ftc/team-sponsors



2015 FIRST ROBOTICS COMPETITION SPONSORS

Kickoff Sponsors



Suppliers

Crown Suppliers

3D Systems
3M Company
AndyMark, Inc.
Bimba Manufacturing Company
BURNDY LLC
The Coca-Cola Company
Cross the Road Electronics, LLC
DS SolidWorks
ebm-papst Inc.
FedEx Corporation
Gates Corporation
igus, Inc.
Innovation First International
Microsoft Corporation
NI
NVIDIA Corporation
PTC, Inc.
Rockwell Automation, Inc.

Diamond Suppliers

Analog Devices, Inc.
Autodesk, Inc.
Bishop-Wisecarver Corporation
EnerSys
Festo Corporation
GitHub
Grainger
Texas Instruments
Xilinx

Gold Suppliers

AutomationDirect.com
BaneBots, LLC
Denso/ASMO North Carolina
Digi-Key Corporation
Fluke Corporation
Havabana Productions

IMI Precision Engineering
Inventables
MaxBotix Inc.
Parker Hannifin Corporation, Fluid System Connectors Division
Philips Color Kinetics
Ruland Manufacturing Co., Inc.
Tableau Software
TTI Inc.

Vulcan Spring and Mfg Co.
WAGO Corporation
Worcester Polytechnic Institute

Silver Suppliers

16 Hertz LLC
Altium Inc.
Anderson Power Products®
CLIPPARD INSTRUMENT LAB., INC.
CTL
Eaton’s Bussman Business
Electronic Components Industry Association (ECIA)
Freelin-Wade Co.

Haydon Kerk Motion Solutions
Intelitek
Kent Elastomer Products, Inc.
Kepware Technologies
Next Gen Robots

Novelis
REV Robotics
Sapa Extrusions North America

Bronze Suppliers

Assmann
Batteries Plus Bulbs
Bayer MaterialScience LLC
BOSCH
Bourns
Coilcraft, Inc.
Comcast NBCUniversal
CUI Inc.
Cypress
Delphi Automotive PLC
Diamond Technologies
Dove Electronic Components, Inc.
Honeywell International Inc.
HPE Automation
Law Logistics
Littelfuse, Inc.
Maxim Integrated
Mouser Electronics, Inc.
NASON
NKK Switches
NXP Semiconductors
Orbis Corporation
Pelham Plastics
RoboRealm, LLC
Sparkfun Electronics
Staples
Vishay Intertechnology, Inc.

WestCoast Products

Top Team Sponsors

(20 or more teams in 2015)

Sponsors in this section are listed in descending order starting with the Sponsor of the highest number of teams.

The Boeing Company
National Aeronautics and Space Administration (NASA)

National Defense Education Program (NDEP)
BAE Systems
United Technologies Corporation (UTC)
PTC, Inc.

Qualcomm Incorporated
General Motors Company
Brin Wojcicki Foundation
Rockwell Automation, Inc.

Society of Women Engineers (SWE)
Boston Scientific Corporation/Argosy Foundation
Booz Allen Hamilton, Inc.

Leidos, Inc.
Comcast NBCUniversal
Caterpillar Foundation
Bechtel Group Foundation

Bezos Family Foundation
TE Connectivity
Abbott Fund
GE Healthcare
Picatinny Arsenal

Motorola Solutions Foundation
BOSCH
Google.org
GE Energy

Friends of Hawaii Robotics
John Deere
Medtronic
Teradata Corporation

NRG Energy, Inc.
Rockwell Collins, Inc.
Walt Disney Company
Amgen Foundation, Inc.

DC Public Schools
The Dow Chemical Company
Heinz Endowment
Renasas

St. Jude Medical Foundation
News Corp
Novelis
Motorola Mobility Foundation

SAIC

Rookie Team Grantors

Anonymous
Argosy Foundation
Bechtel Group Foundation
Ursula Burns ■ & Lloyd Bean
DEKA Foundation

FedEx Corporation

Walter Havenstein ■

Microsoft Corporation

Robert ■ & Lynn Tuttle

United Technologies Corporation (UTC)

Josh ▲ & Judy Weston

Event Sponsors

Alamo Regional Sponsored By
Rackspace Hosting

AKIMEKA

Booz Allen Hamilton, Inc.

CPS Energy

FIRST in Texas

Graebel Van Lines

Greater Texas Foundation

Hallmark University

NI

Prism Technologies Group

Rackspace Hosting

SASTEMIC

Tesoro Corporation Toyota Motor Manufacturing Texas

University of Texas San Antonio

U.S. Air Force

U.S. Navy

Whataburger

Arizona East Regional

Avnet

Craig and Barbara Barrett Foundation

CUSD (Chandler Unified School District)

Microchip Employees United Way

Microchip Technology, Inc.

ON Semiconductor

Sanghi Family Foundation

Science Foundation Arizona

U.S. Army

Wells Fargo & Company

Wishes in Stitches Embroidery

Arizona West Regional

Grand Canyon University

Microchip Employees United Way

Microchip Technology, Inc.

Sanghi Family Foundation

Science Foundation Arizona

U.S. Army

Arkansas Regional

Arkansas FIRST Incorporated

Arkansas Space Grant Consortium

Arkansas State Fairgrounds

Baxter International, Inc.

Bylites

The Coca-Cola Company

Geisler Family Trust

Harding Center for Distance Education in Bible and Ministry

Little Rock Convention and Visitors Bureau

Novak Technical Services

RCAL Products, Inc.
U.S. Army
The Venture Center
Australia Regional
AarNet
AndyMark, Inc.
Autodesk, Inc.
BAE Systems
CSC Charitable Foundation
Ford Motor Company
Google
LEGO® Education
Macquarie ICT Innovations Centre
Macquarie University
Manton Sea-Air
NI
News Corp
Optus
Rockwell Automation, Inc.
Bayou Regional
Dr. & Mrs. Nick Altiero
Family and Friends of James B. Bassich
CenturyLink
The Dow Chemical Company
Energy
Anne & Wendell Gauthier Family Foundation
The Bruce J. Heim Foundation
Jefferson Parish Convention and Visitors Bureau
Kirkendoll Management, LLC
Leidos, Inc.
Lockheed Martin Corporation
Louisiana State Bar Association
NASA Stennis Space Center
National Defense Education Program (NDEP)
U.S. Navy
Buckeye Regional
Cleveland Clinic Foundation
Cleveland Community College Foundation
Cleveland Indians
Cleveland Plain Dealer
Cleveland State University
Cleveland State University Washkewicz College of Engineering
Delphi Foundation
Embedded Planet
Gilcrest
Great Lakes Science Center
Jacobs Engineering
MAGNET The Manufacturing Advocacy & Growth Network
NASA Glenn Research Center
Nordson Corp.
OAI
Ohio Space Grant Consortium
Paragon TEC
Parker Hannifin Corporation
Rockwell Automation, Inc.

RPM
SGT
Sierra Lobo
ZIN Technologies
Central Illinois Regional
The Boeing Company
Bradley University
Caterpillar, Inc.
Citizens Equity First Credit Union (CEFCU)
cse software, inc.
Deuce Development Corporation
Motorola Solutions Foundation
PTC, Inc.
Central Valley Regional
Google.org
John Bean Technologies Corporation
Kings View Behavioral Health Systems
Madera Unified School District
PG&E Corporation
David Rich
Schneider Electric
Chesapeake Regional
Bechtel Group Foundation
Booz Allen Hamilton, Inc.
Capitol Technology University
Emerson Charitable Trust
enktesis, LLC
Leidos, Inc.
Lockheed Martin Corporation
Maryland Space Business Roundtable
NASA Goddard Space Flight Center
Northrop Grumman Corporation
STEMaction
The Sylvan Laureate Foundation
T. Rowe Price Foundation
University of Maryland College Park
U.S. Army ROTC
Colorado Regional
Arrow Electronics
The Ball Foundation
Comcast NBCUniversal
Denver Museum of Nature & Science
Gates Corporation
GivingFirst.org
InterCall
Lockheed Martin Corporation
LunarG
Nan Desu Kan
Wade & Katherine Sutton
Technetronic Solutions, Inc.
TerumboBCT
Trace3
United Launch Alliance (ULA)
University of Denver, School of Engineering & Computer Science
U.S. Engineering

Dallas Regional
Abbott Fund
Anonymous
Anonymous in honor of Jackson Kerber
Atmos Energy
Greg Auclair
Kelly Banks
James Beabout
William Beach Jr.
Steven Berry Jr.
Todd Bethel
Theodore Bills
Brenda Bledsoe
Roy Bobo Jr.
Steven Bose
Boston Scientific Corporation
Brent Braden
Steve Brodie
Robert Bulmer
Angela Ceglie
Cisco Systems, Inc.
Angella Coil
Rebecca Davenport
Jason Davidson
Michael Dodd
Peter Dunn
Jamie Gage
Thomas Garrett
Camille Chang Gilmore in memory of Dorothy Fischer
Goldman Sachs Group, Inc.
Greater Texas Foundation
Grace Griffin
Brett Haaga
Geri Hansen
Dustin Harrington
Richard Hayes
Trever Houston Hefner
Scott Heuler
Jaimee Mae Hickey
Irving Convention & Visitors Bureau
Judy Johnson
Shaun Kane
Michael Kohler
Michael Lang
Janet Larsen
Mike Lautzenheiser
Andrew Jackson Lowery
Annick Matherne
Donald May Jr. in honor of Carson Buol
Robert McCarthy
Amy McCoskey
Ryan McKeefrey
Melissa Messenger in memory of Charles Paul Messenger
Microsoft Corporation Matching Gifts Program
Scott Miller

Mouser Electronics, Inc.
William Nicholson III
Edward O'Dwyer III
Traci Ann Vinopal Phillips
Robert Philpott Jr.
Kevin Pieters
Michele Polk
Eric Prager
Jennifer Prentice
Thaddeus Reardon
Robert James Richardson
Hiram Joel Rios
Patricia Meeks Roberts
Mark Rosin
Steven Ross
Jillian Leigh Rothwell
Jonathan Rucker in honor of Reid Rucker
Edward Patrick Rush
Mark Sanfilippo
Lisa Schaab
Paul Schilling
Servergy
Christopher Smith
Julie Soldo
Todd Stablein
Kristiane Teeple
Total Facility Solutions, Inc.
Philip Venables
Angela Volk
James Watkins
Christie Ann Woodman
Joshua Wright
Ryan Zimmer
Festival de Robotique FIRST Robotics Competition à Montreal Regional
Bank de Montréal (BMO Groupe financier) Future Electronics
Banque Nationale (BNC) Famille Beaudoin
Bombardier Produits Récréatifs (BRP) Groupe Canam et Manac
Cirque du Soleil
Commission scolaire Beauce-Etchemin
Commission scolaire de la Pointe de l'Île (CSPI) CAE
Commission scolaire de la région de Sherbrooke (CSRS) UBS
Commission scolaire de Montréal (CSDM)
Commission scolaire de Montréal (CSDM) Plan Sud Ouest
Commission scolaire Lester B. Pearson (LBPSB) Hautes Études Commerciales (HEC) Montreal Université Laval
Commission scolaire Marguerite-Bourgeoys (CSMB) Brault & Bouthillier
Concordia University
École de Technologie Supérieure (ÉTS)
Emplois Compétences Polytechnique Montréal CRSNG
Fondation JA Bombardier Fondation Lucie et André Chagnon Bombardier Inc.

Fondation Jeunesse Vie (CGI) Armtex
Fondation Québec Jeunes - CJEEN - Réunir Réussir (R2) Université de Sherbrooke
General Electric Company (GE)
Google.org
Héroux Devtek
Hewitt
Hydro-Québec
McGill University
Ville de Montréal
Ordre des ingénieurs (OIQ) Famille Ménard
Power Corporation
Pratt & Whitney Canada (PWC)
Réseau Réussite Montréal
Saputo
Université de Montréal
UQAM
UQAR
Vigilant Global
WSP Canada
Finger Lakes Regional
Bausch & Lomb Incorporated
Corning Incorporated
County of Monroe Industrial Development Agency
Custom Courier Solutions
Mark Enzien
ESL Charitable Foundation
Gleason Works
Hamilton AV
Harris Corporation, RF Communications Division
Ronald Iannucci
Kodak/RAPA
Novelis
Ortho-Clinical Diagnostics
Glen Pearson
William Pollock
PTC, Inc.
Rochester Institute of Technology
U.S. Army ROTC
Wacky Buttons
Xerox Corporation
Ronald Zarrella
Georgia Southern Classic Regional
AutomationDirect.com
The Arthur M. Blank Family Foundation
Cisco Systems, Inc.
Discover Perry
Georgia Institute of Technology
Georgia Power Co. (A Southern Co.)
Karen Albrecht Enterprises
Kennesaw State University
Kimberly-Clark Corporation
Lockheed Martin Corporation
Selby & Richard McRae Foundation
Mercer University - Engineering
University of Georgia - Engineering

U.S. Army ROTC
YKK
Greater DC Regional
2 Million Minutes
Accenture
Bechtel Group Foundation
Booz Allen Hamilton, Inc.
DataNet Systems
District of Columbia Public Schools
General Dynamics
Harris Corporation
Holly Hill Self Storage
Hughes Network Systems
INSPR Media LLC - Public Relations
Leidos, Inc.
LMCO Undersea Systems
Lockheed Martin Corporation
Micron
National Aeronautics and Space Administration (NASA)
Northrop Grumman Corporation
Orbital Sciences Corporation
Rolls-Royce North America
SRA International Corporation
U.S. Army ROTC
Volgenau School of Engineering at George Mason University
Greater Kansas City Regional
APWA Kansas City Metro Chapter
Black & Veatch
BlueScope Foundation
Burns & McDonnell
Cerner
DST Systems
Garmin
General Motors Company
Google Fiber
Honeywell International Inc.
Ewing Marion Kauffman Foundation
KC STEM Alliance
KCP & Lok
Metropolitan Community College
MRI Global
Show-Me Controls & Automation
UMKC
US Engineering
VML
Greater Pittsburgh Regional
California University of Pennsylvania
Google.org
The Heinz Endowments
MadeRightHere
Hawai'i Regional sponsored by BAE Systems
Ala Moana Hotel
Alaska Airlines
Aston
BAE Systems

Booz Allen Hamilton, Inc.
City Mill
FedEx Corporation
Hawaii Flower Lei
Hawai'i Self Storage
iHeart Media
Karai Crab
Matson
McDonald's
MW Group, Ltd.
Northrup Grumman Corporation
Oceanic Time Warner Cable
SAIC
Star Advertiser
University of Hawai'i
Willows Restaurant
Hub City Regional
Greater Texas Foundation
Texas Workforce Commission
Visit Lubbock
Xcel Energy
Indiana FIRST Sponsors
AndyMark, Inc.
Barnes & Thornburg, LLP
Fastenal
Indiana Department of Education
Rare Bird Inc.
Rolls-Royce
TechPoint Foundation for Youth
Indiana FIRST Robotics Competition District State Championship
3M Company
Barnes & Thornburg, LLP
Dow AgroSciences LLC
The Dow Chemical Company
Indiana Space Grant Consortium (INSGC)
Raytheon Company
Rolls-Royce
SEP
Walker Career Center
Warren Central High School
Indianapolis FIRST Robotics District Competition
Barnes & Thornburg, LLP
Metropolitan School District of Lawrence Township
Rolls-Royce
Kokomo FIRST Robotics District Competition
Ameriprise Financial
AndyMark, Inc.
B&D Mfg.
BMO Harris
Bucheri, McCarty & Metz LLP
CEM
The Coca-Cola Company
Community First Bank of Indiana
Community Foundation of Howard County

Delphi Foundation
First Farmers Bank & Trust
Howard County
Indiana University – Kokomo
Ivy Tech Community College
Kokomo School Corporation
Marco's Pizza
Purdue College of Technology
Region 4 Workforce Board
Rolls-Royce
Rotary Club of Kokomo
St. Vincent
Purdue FIRST Robotics District Competition
Arni's
Stephen Baranyk
Cook Medical
Delphi Foundation
Indiana Space Grant Consortium (INSGC)
Novelis
One Source
Purdue School of Engineering Education
Purdue School of Mechanical Engineering
Purdue University
Raytheon Company
Rolls-Royce
SEP
Inland Empire Regional
SMaRT Education
Israel Regional
Ariel Investment Company
Bank Leumi
Bialkin Family Foundation
Stanley & Ann Borowiec
Bovin Family Foundation
Christopher & Barbara Brody
Checkpoint
The Leon and Toby Cooperman Family Foundation
Rich Daly
Ron Deblinger
James Dimon
Irwin & Janet Dorros
The Drexler Family Foundation
Thomas & Susan Dunn
Mitzi and Warren Eisenberg Family Foundation
Ferland Family Foundation, Inc.
Bernard Flynn
Phil Friedman
Stephen & Fredrica Friedman
Victor & Patricia Ganzi
John Gerbeth
Alfred Goldstein
Jerry & Paula Gottesman
Richard & Carol Harries
Isuzu – UTI Israel
Jewish Federation of Greater Metrowest NJ

L. Robert & Kathleen Kaswell
Earle Kazis
Bernard and Carol Kossar Foundation Inc.
Jerrold Krivitzky
The Marcus Foundation, Inc.
Thomas & Paula McInerney
John Norgride
Marne Obernauer
Ofit Capital Advisors LLC
Ms. Sarah O’Hagan
Parasol Foundation
Mary Pedersen & Leslie Quick
Arnold S. Penner Foundation Inc.
Leonard Polisar
PTC, Inc.
Qualcomm Incorporated
Peter & Crisler Quick
Steven & Gail Reinemund
Stephen & Pilar Robert
Gerard Roche
Edward Rust
The Ryan Family Foundation
John Schreiber
Neal Shapiro & Hyunju Chang
Paul Silberberg
Paul Silverman
Stephen & Tina Squeri
Joseph and Arlene Taub Foundation
The Technion - Israel Institute of Technology
The Tel- Aviv Yaffo Academic College
The City of Tel-Aviv Yaffo
William & Judith Turner
Frank Walter III & Marguerite Walter
The Weiss Foundation
Josh▲ & Judy Weston
Mortimer Zuckerman

Lake Superior Regional

Archer Racing Accessories
Arrowhead Concrete Works, Inc.
Barr Engineering
Canal Park Business Association (CPBA)
Chris & Jason Dillon
Cirrus Aircraft
Duluth Entertainment and Conference Center
Edgewater Resort & Waterpark
Essentia Health
Freestyle
Genesis
Grandma’s Adventure Zone
Grandma’s Restaurants
Hartel’s/DBJ Disposal
Isthmus Engineering & Manufacturing Co-op
The Jamar Company
Joy Global Inc.
Kraus-Anderson Construction Co.
Lamar
LHB Foundation Fund
Miner’s/Super One

Minnesota Power Foundation
MPECU - Minnesota Power Employees Credit Union
Northern Door & Hardware, Inc.
Northland Foundation
Pentair Foundation
Republic Bank
St. Luke’s
Saturn Systems Inc.
Stay in Duluth
Target
Visit Duluth

Las Vegas Regional

8 News Now
Albertsons
CGI Inc.
Cirque du Soleil
FIRST Nevada
S. Freid
City of Las Vegas
Las Vegas Convention and Visitors Authority
Lockheed Martin Corporation
National Security Technology, LLC
Nevada PE Foundation
Rich, Wightman & Company
S&S Philpott
Solotech
Tronox

Lone Star Regional

American Society of Mechanical Engineers (ASME)
Bechtel Group Foundation
BP Corporation North America, Inc.
CenterPoint Energy
ExxonMobil Corporation
General Electric Company (GE)
Greater Texas Foundation
Jacobs Technology, Inc.
LINN Energy, LLC
Lockheed Martin Corporation
NASA Johnson Space Center
The Williams Companies, Inc.

Los Angeles Regional sponsored by The Roddenberry Foundation

Amgen, Inc.
Bancroft-Clair Foundation
Boston Scientific Corporation
Comcast NBCUniversal
Jet Propulsion Laboratory
The Kenneth T. and Eileen L. Norris Foundation
The Gerald Oppenheimer Family Foundation
The Ralph M. Parsons Foundation
Stephen & Jill Petty
Raytheon Company
The Roddenberry Foundation
SpaceX
USC Viterbi School of Engineering
Walt Disney Company

Mexico Regional

DeAcero
Fundación Azteca de Grupo Salinas
General Motors Company, México
Mabe
MET MEX Peñoles
Promedici, S.A. de C.V.
Secretaria de Economía
Secretaria de Educación Pública
Michigan *FIRST* Sponsors
AndyMark, Inc.
BOSCH
Castaing Family Foundation
Comau
Consumers Energy
Deloitte
Delphi Foundation
Detroit Hispanic Development Corporation
S. Freid
The Dow Chemical Company
DTE Energy Foundation
Dura Automotive Systems
FCA Foundation
Ford Motor Company
General Cable
General Motors Company
General Motors Foundation
Gorman’s
Ideal Group
Kendall Electric
Kettering University
LEX
State of Michigan
PTC, Inc.
The Robot Garage
TARDEC
Toyota
University of Michigan
Whirlpool Corporation

Michigan FIRST Robotics Competition District State Championship

American Society for Engineering Education (ASEE)
Automation Federation/ISA
BOSCH
Boys & Girls Clubs of America
Castaing Family Foundation
Comau
Consumers Energy
Delphi Foundation
Ford
General Motors Company
Girl Scouts of the USA
MIT Alumni Association
National 4-H Council
National Center for Women & Information Technology (NCWIT)
National Parent Teacher Association (PTA)

National Robotics Week
Society of Cable Telecommunications Engineers (SCTE)
Society of Hispanic Professional Engineers (SHPE)
Society of Women Engineers (SWE)
Toyota
UL
Whirlpool
Yale Science & Engineering Alumni

Bedford FIRST Robotics District Competition

Bedford Public Schools
Eastman & Smith Ltd.

Centerline FIRST Robotics District Competition

A Dream Limousine and Sedan
AndyMark, Inc.
Renaissance Unity
Toyota

Escanaba FIRST Robotics District Competition

Bays de Noc Visitors Convention and Visitors’ Bureau
Bink’s Distributing
The Coca-Cola Company
Delat Chamber of Commerce
EMP Powering the Future
Michigan Works
NK Electric
Pacinos Food and Spirits

Gull Lake FIRST Robotics District Competition

Gull Lake Community Schools Foundation
Gull Lake View Golf Club & Resorts
Parker Hannifin Corporation

Great Lakes Bay Region FIRST Robotics District Competition

The Dow Chemical Company
Michigan’s Best Entertainment
Midland Public Schools
Mid-Michigan Limousine
Pepsi
Valley Electrical Contractors

Howell FIRST Robotics District Competition

Allegra Networks
Autodesk, Inc.
Home Depot
Ford Motor Company

Kettering University FIRST Robotics District Competition

Fiat Chrysler Automobiles
General Motors Foundation
Kettering University
Stat EMS
Charles Stewart Mott Foundation

Lansing *FIRST* Robotics District Competition
Dart
Ingham Intermediate School District
Jackson National Community Fund
Livonia *FIRST* Robotics District Competition
Livonia Public Schools
Roush Industries
Schoolcraft College
TRW

St. Joseph FIRST Robotics District Competition

LECO Delivering the Right Results
St. Joseph Lions Club
TPC Technologies, Inc.
Whirlpool

Standish FIRST Robotics District Competition

The Dow Chemical Company
Dura Automotive Systems
Helena Chemical Co.
Independent Bank
Magliner

Traverse City FIRST Robotics District Competition

American Waste
Blarney Castle Oil Company
Chevron Corporation
Cone Drive Gearing Solutions
Culver’s
Grand Traverse Band of Ottawa & Chippewa Indians
Jimmy John’s
MCM Electric Company
North Flight EMS
Opti Temp Inc.
TBA ISD Career Tech Center
TC Controls, LLC
Trantek Automation Corporation
Traverse City Area Public Schools

West Michigan FIRST Robotics District Competition

Atomic Object, LLC
Bluewater Technologies
Consumers Energy
Disher Design & Development
DTE Energy
Flexco/Clipper Belt Lacer
GE Aviation Systems
Gentex Corporation
Grand Valley State University
Haworth Inc.
J.C. Huizenga
Kendall Electric
Lacks Enterprises Inc.
David & Robin Leclerc

Wendy Ljungren
Miejer
NN, Inc.
Pepsi
Pioneer Construction
Roman Manufacturing
Sebastian Foundation
TPI –Total Plastics Inc.
Wolverine Coil Springs Co.

Waterford FIRST Robotics District Competition

Empirical Solutions Corporation
Waterford School District

Woodhaven FIRST Robotics District Competition

Dadara
Ford Motor Company

Mid-Atlantic Robotics FIRST Robotics Competition Region Championship

ADP at the request of Josh Weston▲
Bloomberg L.P.
Bristol Myers Squibb
Comcast NBCUniversal
The Dow Chemical Foundation
DuPont
Johnson & Johnson
Mercury Systems
NJ Manufacturers
Novartis Foundation
Picatinny Arsenal
Jim ● & Nancy Utaski
Friends of Jim ● & Nancy Utaski

Midwest Regional

Baxter International, Inc.
Google.org
Illinois Institute of Technology
Motorola Solutions Foundation
Navistar
University of Illinois

Minnesota 10,000 Lakes Regional

3M Company
Michele Azar
Best Buy Co., Inc.
Boston Scientific Corporation
Boston Scientific Employee Giving
Chinese Urban Youth Robotics Alliance
Li Chunlin
Freestyle
Isthmus Engineering & Manufacturing Co-op
The Medtronic Foundation
Medtronic, Inc.
Medtronic Your Cause ♦
MN State High School League
Pentair Foundation
Robotics Alley
Target
University of Minnesota Twin Cities

Minnesota North Star Regional
3M Company
Michele Azar
Best Buy Co., Inc.
Boston Scientific Corporation
Boston Scientific Employee Giving
Chinese Urban Youth Robotics Alliance
Li Chunlin
Freestyle
Isthmus Engineering & Manufacturing Co-op
The Medtronic Foundation
Medtronic, Inc.
Medtronic Your Cause ♦
MN State High School League
Pentair Foundation
Robotics Alley
Target
University of Minnesota Twin Cities

New England District Championship

Analog Devices
BAE Systems
Boston Scientific Corporation
Davis Family Foundation
ebm-papst Inc.
Eversource
Fidelity Investments
General Dynamics EB
Google.org
MIT Draper
National Grid
PCLB Foundation
Pitney Bowes
PTC, Inc.
Textron
Travelers
United Technologies Corporation (UTC)
U.S. Air Force
Velcro Industries

New York City Regional

AB
Bloomberg L.P.
Larry & Tami Cohen
Comcast NBCUniversal
Consolidated Edison Company of New York, Inc.
Credit Suisse (USA), Inc.
CSC Charitable Foundation
Michael Dubno▲
Donald J. Duet
Glenn Gribble
Goldman Sachs Group, Inc.
Google.org
ICE Foundation
News Corp
Pershing Square Foundation
Clyde Rodriguez
Siegel Family Endowment

Two Sigma Investments, LLC
Philip Venables
Paul Walker
Allen Weinberg
New York Tech Valley Regional
ASML
Applied Materials Inc.
GE
GLOBALFOUNDRIES
Golub Foundation
Kitware Inc.
KLA Tencor
Lam Research Foundation Fund at the East Bay Community Foundation
M+W US, Inc.
Mattson Technology, Inc.
National Aeronautics and Space Administration (NASA)
National Grid
PDF Solutions, Inc.
Rensselaer Polytechnic Institute
SCREEN Semiconductor Solutions
Time Warner Cable
Turner Construction Company
Wonik IPS USA

North Bay Regional

A&S Towing
Atlas Copco
Canadore College
FedNor
Hampton Inn
HOST North Bay & District Hospitality Organizations Strengthening Tourism
Joy Global Inc.
Metso Minerals Canada Inc.
Motion Canada
Near North District School Board
Nipissing University
City of North Bay
Redpath Mining Contractors and Engineers
SMS Rents
twg* Communications

North Carolina Regional

Cisco Systems, Inc.
Credit Suisse (USA), Inc.
Fuentek
Gateway University Research Park
Google.org
John & Jane Hardin
IBM Corporation
Livingston and Haven
MacCord Mason
MetLife Foundation
PPG Foundation
Qualcomm Incorporated
Sigma Xi
TE Connectivity
Teaching Textbooks Inc.
Time Warner Cable

United Technologies Corporation (UTC)
Volvo
Northern Lights Regional
Archer Racing Accessories
Arrowhead Concrete Works, Inc.
Barr Engineering
Canal Park Business Association (CPBA)
Chris & Jason Dillon
Cirrus Aircraft
Duluth Entertainment and Conference Center
Edgewater Resort & Waterpark
Essentia Health
Freestyle
Genesis
Grandma's Adventure Zone
Grandma's Restaurants
Harte's/DBJ Disposal
Isthmus Engineering & Manufacturing Co-op
The Jamar Company
Joy Global Inc.
Kraus-Anderson Construction Co.
Lamar
LHB Foundation Fund
Miner's/Super One
Minnesota Power Foundation
MPECU - Minnesota Power Employees Credit Union
Northern Door & Hardware, Inc.
Northland Foundation
Pentair Foundation
Republic Bank
St. Luke's
Saturn Systems Inc.
Stay in Duluth
Target
Visit Duluth
Oklahoma Regional
AAON, Inc.
ABB Inc.
American Energy Partners
William & Diana Beaulieu
Candor PR
Chesapeake Energy Corporation
The Chickasaw Nation
Mickey L. Clagg
Kenneth & Lisa Davis
Dell-OKC
Devon Energy Corporation
Dunlap Coddling P.C.
Express Employment Professionals
Google.org
Greater Oklahoma City Chamber of Commerce
Bob Howard
IDEAS Mfg. Inc.
Inasmuch Foundation
Intellectual Property Section-Hall Estill
IS Technologies DBA Computer System Design

Kerr Foundation, Inc.
Kirkpatrick Foundation, Inc.
MSC Industrial Supply Company
OGE Energy Corporation Foundation, Inc.
OK Business Roundtable
OK Department of CareerTech
Oklahoma Aeronautics Commission
Oklahoma Center for the Advancement of Science & Technology
Oklahoma Christian University
Oklahoma City Convention and Visitors Bureau
Oklahoma State University
Presbyterian Health Foundation
University of Oklahoma
University of Tulsa College of Engineering and Natural Sciences
U.S. Air Force
Ward Family Gift Foundation
The Williams Foundation
John Steele Zink Foundation
Orlando Regional
a.i. Solutions
Abacus Business Solutions
Association for Advancing Automation
Boca Bearing Company
The Boeing Company
Brighthouse Networks
Comcast NBCUniversal
Craig Technologies
Electronic Arts, Inc.
Embraer Aircraft
Eureka Factory
Florida High Tech Corridor - UCF
Florida High Tech Corridor - USF
Harris
HDR, Inc.
Jacobs Technology, Inc.
Leidos, Inc.
Lockheed Martin Corporation
NASA Kennedy Space Center
The National Center Simulation
Northrop Grumman Corporation
RINI Technologies
Siemens Corporation
Sparton Electronics
Stinger Ghaffarian Technologies
University of Central Florida
URS
U.S. Army ROTC
The Walt Disney Company
Women in Cable Telecommunications
Peachtree Regional
ASME - Atlanta Chapter
AutomationDirect.com
The Arthur M. Blank Family Foundation
Cisco Systems, Inc.
Georgia Institute of Technology

Georgia Power Co. (A Southern Co.)
Karen Albrecht Enterprises
Kennesaw State University
Kimberly-Clark Corporation
Selby & Richard McRae Foundation
Mercer University - Engineering
Novelis
University of Georgia - Engineering
U.S. Air Force
U.S. Army
U.S. Army ROTC
Women in Technology
Queen City Regional
Abbott Fund
Alexander & Associates
Eaton Computer Services
Josh Haldeman & Caroline Alikonis
P&G Engineering Modeling and Simulation
P&G Global Engineering
School Outfitters
Toyota
University of Cincinnati
U.S. Air Force
Xavier University
Sacramento Regional
Abbott Fund
Brin Wojcicki Foundation
Chevron
Google.org
Randall Lam
University of California, Davis
San Diego Regional
3Dconnexion
Leidos, Inc.
Outerwall
Richard Pogue
PTC, Inc.
Qualcomm Incorporated
Teradata Corporation ♦
ViaSat, Inc.
SBPLI Long Island Regional
accessLinx, Inc.
BAE Systems
Brookhaven NSA
Cablevision
Estee Lauder Companies
Farmingdale State University
Festo Corporation
Hofstra University
IEEE - Institute of Electrical and Electronics Engineers
Ingerman Smith, LLP
Nassau Educators Federal Credit Union
North Shore LIJ Health Systems
Northrop Grumman Corporation
Patrons of the SBPLI 2014 Annual Golf Outing
Pepsi

PSEG Long Island
SBPLI School of Business
SCC Construction Management
Schenck
The Science Academy at Parkshore
SCOPE Education Services
Solomon Group
Stony Brook University
Town of Brookhaven LDC
Town of Islip IDA
WorkLife Resources
Silicon Valley Regional
Analog Devices, Inc. (ADI)
Argosy Foundation
Boston Scientific Corporation
Brin Wojcicki Foundation
Google.org
Randy Lam
NVIDIA Corporation
Qualcomm Incorporated
Smoky Mountains Regional
Alcoa, Inc.
Bechtel Group Foundation
Denso Manufacturing Tennessee, Inc.
Eagle CDI
Eastman Chemical Company
Kendall Electric
Knoxville Chamber
Knoxville News Sentinel
Leidos, Inc.
Pellissippi State Technical Community College
PTC, Inc.
Radio Systems Corporation
Petsafe
Tennessee Valley Authority (TVA)
University of Tennessee College of Engineering
U.S. Army ROTC
UT-Battelle/Oak Ridge National Laboratory
Y-12
South Florida Regional
Jose Bantillo
Thomas Broad
Andrew Christie
Comcast NBCUniversal
DEKA Foundation
Florida Power & Light Company♦
James Keener
Brian Mangan
Michael Miller
Scott Phillips
Matthew Schouwink
U.S. Army ROTC
Maureen Wilt
Utah Regional
ATK
IM Flash Technologies
L3

Micron Foundation
Miller Family Philanthropy
Platt Electric Supply
STEM Action Center
Victoria Thomas
Utah Governor's Office of Economic Development
Utah Tech Workforce Foundation
Utah Technology Council
Ventura Regional
Amgen, Inc.
Gene Haas Foundation
E.J. Harrison & Sons
Limoneira
Ventura College
Western Canadian FIRST Robotics Competition Regional
ADLC (Alberta Distance Learning Centre)
Alberta Culture and Tourism
Alberta Innovation and Advanced Education
APEGA
Calgary Board of Education
The Dow Chemical Company, Canada
Ernest Manning High School
ISA
NSERC CRSNG
Pratt & Whitney Canada (PWC)
Schulich School of Engineering
University of Calgary
Windsor Essex Great Lakes Regional
Aventec/Dassault Systemes
Balluff
CenterLine
City of Windsor
CS WIND Canada
EPI Centre
Flex-N-Gate
Greater Essex Electrical
KPMG
KUKA
OCE
ONE
Reko
St. Clair College
Siemens Corporation
South Western Ontario Industry Education Council
University of Windsor
Valiant
Vista Solutions Inc.
WEtech Alliance
Wisconsin Regional
Abbott Fund
Caterpillar Global Mining, LLC
Cooper Power Systems
Eaton Corporation
GE Healthcare
Google.org
Isthmus Engineering & Manufacturing Co-op

Joy Global Inc.
Ladish Co. Foundation
LEM USA Inc.
Manpower Group Marquette University
Michael Best & Friedrich LLP
Mosher Family Foundation
MSOE
Oshkosh Corporation
The Plexus Corporation Charitable Foundation, Inc.
Rockwell Automation, Inc.
Thunderbolt Hobby & Art

A list of FIRST Robotics Competition Team Sponsors is available online at www.firstinspires.org/robotics/frc/team-sponsors



2014-2015 FIRST Progression of Programs Region Sponsors
Washington FIRST Robotics

AAA Kartak Glass & Closet
Robert Adams
Govind Agarwal
Alaska Airlines
Joel A. Alferness
Roxanne Alves
American Truck Historical Society, NW Chapter
Stephen & Gayle Amorosi
Kevin Anderson
Anonymous
Chris & Nicole Arian
Arrow Electronics
Robert Atkinson
John Aultman
Autodesk, Inc.
Avista Foundation
Conrad Ball
Lola Ball
Kathleen Barnes
Steve & Leann Barrett
Dan & Kathleen Beaudoin
Bechtel Group Foundation
Andrew Belan
Jon Belt
Sue Bennett
Bernt Lehnn Farms, Inc.
Bezos Family Foundation
Subbu Bhat
Marjorie Blanck
Jason Blaszkowski
Brian & Sharon Bloomquist
Paul W. & Kimberly A. Bodnar
The Boeing Company

The Boeing Company Employee Funds
James Boike
Shannon Boldizar
Mark & Dawn Bolin
Bonneville Power Administration
John Bottenberg
Michael & Linda Breaux
Scott & Margaret Bright
Frank Brisse
British-American Business Council
Eric & Jennifer Brooks
Paul Brown
Stacy Brown
Ian & Cynthia Buford
Steve Burke
Heidi Burkett
Terry Byington
Tyson Cady
Erwin & LaShanda Caldwell
Sherry & Marty Calvert
Miguel de Campos
A.N. & L.L. Carlson
Stephen Carlson
Steven A. & Natalya M. Carlson
David & Shelly Carmen
Dave Carroll
Valerie Carter
Tang & Teresa Cheam
Xingguang Chen
Haichen Cheng
Cimtech, Inc.
Connie Clark-Redmond
Donna Closson-Lehn
Ken Coburn
Perkins Coie
The Columbus Foundation, Battelle
Comcast NBCUniversal
The Community Foundation of South Sound
John Cook
Cooperative Agricultural Producers, Inc.
Philip & Karen Cramer
Crane Foundation, Inc.
Carol Criner
Shawn & Gina Davis
Geoff & Shawna Dean
Gail DeGiulio
Pat DeGiulio
Ayla DeLaat
Allan J. & Joanne K. Dempsey
James & Sandra Dempsey
Mike Denlinger
Atulkumar Desai
David Dickison
Ying Dong
Alexandra Dorsett
Michael & Stephanie Drasz
E Mental Group, LLC
Vince & Julia Ebey

Joanne Edinberg
ElectroImpact
Eric Emery
Esterline
F5 Networks
Joe Fain
Wilkson Family
Christopher & Kami Felipe
Ferguson Family
Carol Finck
FIRST
First Tech Credit Union
Lance & Wendy Flake
Flir Systems
Scott & Laura Fortin
John & Ilea Fowler
Maureen Frisch
Charles Frohlich
Travis & Sasha Gajewski
James & Rachel Gallagher
Dale Garraway
Andrew Gebhart
Diana Gee
Berta Gensinger
Daniel & Corianne Getchell
David & Melissa Gibson
Global Tech Plastics, LLC
Golden Pacific Embossing, Inc.
Evan & Zoe Goldring
Google.org
Douglas Grady
Regina Grubb
Zihong Guo
Michael Gutmann
K. Diane Haelsig
Jennifer Hagander-Luanava
Marcelo Guerra Hahn
Christian Hansen
Katie Harris
Rosemary Harris
Alison Hawkings
Kevin Hawkins
Jerry & Mary Heitt
Christian Helms
Rebecca Hill
Timothy & Margo Hill
Jansen Hillis
Bhargavi Hiremagalur
Lori & Stephen Hittle
Mark Hofer & Heather Leach
Todd & Stephanie Hollander
Robert Harold Hopp
Michael & Deanne Hoppe
Andrew Hospador
James & Sandra Hunt
Susan Huntington
Adam Huson
Rhonda & Clarence Ince

Intel Foundation
Intellectual Ventures
Hank Iszley
Itron Community Investment
Jeff James
Peter & Elizabeth Josten
Jeff Jouper
Spencer Judge
Paul & Rebecca Jung
Peter & Tracey Jungmann
Kiwanis Club of Oak Harbor
City of Kent
Tammara King
Leif Kornstaedt
John Kottcamp
Kroger
Singh Kulwinder
Rajeev Kumar
Lam Research Foundation Fund
Joshua Lee
Tony J. & Debra G. Lee
Seven & Julie Lemery
Changsheng Li
Tzuyung Lin
A.J. & M.L. Loftus
C.J. Mcanulty Lueck
Jay & Shaulana Lujar
Michael Lumia
Pam Lund
Diem Ly
Janis Machala
Michael Machnicholl
Alfred MacRae
Donald Madonna
James Madonna
Naveen Manjunath
Craig & Carrie Mann
Jared Martinson
Jared & Kelly Martinson
Susan & David Martucci
Mastercam
Maxim Integrated
Marcie Maxwell
Paul & Jean May
Dave & Erin McCallum
Brien McCrea
Keith Meicho
Trevor & Jennifer Meier
Mentor Graphics
Anthony Metoyer
Microsoft Corporation
Microsoft Corporation Giving Campaign
Employee Funds
Leonard & Sandra Miller
Heather Mitchell
Paula Mitchell
Dan Moberg
George & Tichi Motoko

Kimberly Motonaga
Beth Moursund
Sherry Mowatt
Genevieve & Hiroshi Nagata
Namify, LLC
Robert Neckorcuk
Eric Nelson
Paul S. & Shannon Nelson
Daniel Newby
Nytec
Oakfield Development Corporation
Jeffrey Olbers
Chelsea Olson
Nicola Onychuk
David & Debra Orona
P&J Machining
Pacific Metallurgical, LLC
Neil Palachuk
Gurdeep Pall
Andrew Pardoe
Hee-Joo Park
Patrick Dunn & Associates, LTD
David & Rachel Paul
Pete Pereira
David W. & Courtney L. Peters
Phil Pettis
Phillips Ultrasound Inc.
Andrew Pilloud
Jose Pinero
Todd Pollard
Qualitel Corporation
Kyle Quinn
Steven & Amanda Radak
William Rall
Robert & Margo Ralphs
Mahalakshmi Ramasamy
Jacob Rapoport
Ramprabhu Rathnam
Red Dot Corporation
Red Lion Corporation
Red Lion Hotels Corporation
Kevin Reed
Dana Riley-Black
Marcel Rivard
Donna Rollag
Craig Rosenberg
Craig & Vicky Rosencrans
Dan Rosenstein
Kevin Ross ▲ & Sue Adams
Adam Rubens
Kip J. & Ann Rumens
Tracy Russett & Jack Ballard
S&D Kel, LLC
Sevan Sahakian
Ekta Schan
Elizabeth Richards Schwartz
Schweitzer Engineering Laboratories, Inc.
Seattle Chocolate Company

Alain Semet
Sequim PC Users Group
Steven Shaw
Noelle & Joseph Sheehy
Brett Sheil
Changsong Shen
Sunitha Shivananjundappa
Sally Shuler
Arlo Siemens
Atul Sikaria
Kerrie Anne & Ronald K. Simpson
SLG & Associates, LLC
Stan & Mary Sorensen
Michael Sorenson
SPEEA
Jared & Debra Spencer
Joe Stach
Star Rentals
Starbucks
Robert Steele
Jim Stewart
Kurt Strauss
Brian Sullivan
Symbotic, LLC
Tableau Foundation Employee
Engagement Fund
Curtis Takahashi
Nicolas Teeuwen
Brian Thomas
Harry Thomas
David Thompson
Todd Thompson
Brogan Thomsen
Gretchen Thomsen
Elizabeth & Ron Tickman
Van & Chrislyn Torres
Cornelia Townsend
Bach-Tuyet Tran & John P. Anderson
Tri-Cities Lodge #2755
TripWire
Wei Tung
Brad & Julie Turner
URS Electronics, Inc.
Mike Vanderwel
Mike VanSchoiack
James & Jennifer Vasileff
Brigitta Vermesi
Peter Vierthaler
Ravender Virk
Brett & Hali Waldbaum
Alan Walker
Hongyi Wang
George Wu & Li-Ching Wang
Washington State Legislature
Timothy Waterhouse
Brett Webster
Lisa Weeks
Stella Weidner

PARTNERS

**2014-2015
FIRST LEGO LEAGUE JR.
Global Partners**

The following key organizations and Volunteers in the field organize the FIRST LEGO League Jr. Program in their respective regions.

Belgium
Tamara Derksen
Mark Franken
Stichting Techniekpromotie

Norway
Mariann Johnsen
FIRST Scandinavia

Pakistan
Rehan Ahmad
STARfALL Foundation (Science and Technology Awareness and Recognition for All)

Russia
Aleksei Kornilov
Volnoe Delo Foundation

South Africa
Johannes de Vries
Erika de Vries
Tshwane University of Technology

Spain
Montse Bover
Fundación Scientia

Sweden
Nina Sivertsen
FIRST Scandinavia

Turkey
Hakan Habip
Ozlem Mutlu
Bilim Kahramanlari Dernegi

United Kingdom
Richard Pering
The Institution of Engineering and Technology (IET)

United States
Alaska
Rebecca Soza
Juneau Economic Development Council

Arizona
Shane Bycott
Arizona State University, College of Technology & Innovation

California – Central
Michael Adam
Clovis Unified School District

California – Southern
Lynn Crockett
LEGOLAND®

Ireland
Richard Pering
The Institution of Engineering and Technology (IET)

Israel
Yaarit Levy
Keren Muchnik
Moran Shalev
FIRST Israel

Republic of Korea
Eric Lee
FEST Creative Engineering Education Association

Mexico
Barbara Gomez de Navarro
Explora, Descubre Y Crea, AC

The Netherlands
Tamara Derksen
Mark Franken
Stichting Techniekpromotie

Norway
Mariann Johnsen
FIRST Scandinavia

Pakistan
Rehan Ahmad
STARfALL Foundation (Science and Technology Awareness and Recognition for All)

Russia
Aleksei Kornilov
Volnoe Delo Foundation

South Africa
Johannes de Vries
Erika de Vries
Tshwane University of Technology

Spain
Montse Bover
Fundación Scientia

Sweden
Nina Sivertsen
FIRST Scandinavia

Turkey
Hakan Habip
Ozlem Mutlu
Bilim Kahramanlari Dernegi

United Kingdom
Richard Pering
The Institution of Engineering and Technology (IET)

United States
Alaska
Rebecca Soza
Juneau Economic Development Council

Arizona
Shane Bycott
Arizona State University, College of Technology & Innovation

California – Central
Michael Adam
Clovis Unified School District

California – Southern
Lynn Crockett
LEGOLAND®

Ireland
Richard Pering
The Institution of Engineering and Technology (IET)

Israel
Yaarit Levy
Keren Muchnik
Moran Shalev
FIRST Israel

Republic of Korea
Eric Lee
FEST Creative Engineering Education Association

Idaho
Timothy Ewers, Ph.D.
William Boyd
Extension 4-H, University of Idaho

Illinois
Mary Buchanan
Thomas Kleinschmidt
INScITE Illinois

Indiana
Carol Dostal
College of Engineering, Technology and Computer Science
Indiana University – Purdue University, Fort Wayne

Iowa
Camille Sloan-Schroeder
College of Engineering, Iowa State University

Kansas – Liberal
Jim Bert
Mid America Air Museum

Kansas – Kansas City
Gretchen Neis
KC STEM Alliance

Louisiana
Carol Cancienne
Annette Oertling
BLaST, Inc. (Building Louisiana Science and Technology)

Maryland
Mark Jenkins
Bill Duncan
STEMaction, Inc.

Michigan
Cindy Nader
Gail Alpert
FIRST in Michigan

Minnesota
Cheryl Moeller
Mark Schleusner
High Tech Kids

Mississippi
Eddie Melton
Robotics Alliance of Mississippi

Missouri – Kansas City
Gretchen Neis
KC STEM Alliance

Missouri – St. Louis
Kathie Reuter
LeAnn Ore Heumphreus
St. Louis Community College – Florissant Valley

National Society of Black Engineers (NSBE)
Katrina Hill

Nebraska
Brandy Wagner
University of Nebraska – Lincoln 4-H Youth Development

Nevada – Las Vegas
Jean Hoppert
Kelli Callahan
FIRST Nevada

Nevada – Reno
Dee Frewert
FIRST Nevada

New Jersey
Ernest DiCicco, Jr.
Mount Olive Robotics Education Association

New Mexico
Chris Morgan
Sandy Trissell
FIRST LEGO League New Mexico

New York – Finger Lakes
Elayne Stewart
University of Rochester

New York – Long Island
Rick Ramhap
SBPLI, Inc.

New York – Mid-Hudson Valley
John Houston
Dutchess County Community College

New York – New York City
Elizabeth Vilchis
Pat Daly
NYC FIRST

New York – Utica
Elizabeth Rossi
SUNY Institute of Technology

North Carolina
Marie Hoppert
Cathy Gorton
NC FIRST Robotics

Ohio
Kelli Dubendorfer
Educational Outreach
Wright Patterson Air Force Base

Oklahoma
JJ Francais
Craig Shreve
Oklahoma Science and Engineering Foundation (OKSEF)

Oregon
Cathy Swider
Bruce Schafer
Oregon Robotics Tournament and Outreach Program

Pennsylvania – Southeast
Peter Randall
Dan Ueda
University of Pennsylvania

Rhode Island
Rebekah Gendron
Rhode Island School of the Future

South Carolina
Mary Graves
SC FIRST LEGO League and Robotics Education, Inc.

Texas – Alamo
Melody Crabb
Northwest Vista College

Texas – Central
Noah Bickford
Bethany Paul
Skillpoint Alliance

Texas – North
Joe Cestari
DFW Technology and Education Council

Texas – South
Karen Cohen
The University of Houston – CORE

Texas – Southwest
Gabby Gandara
Virgilio Gonzalez
University of Texas at El Paso

Utah

Carolyn Parker
Nate Friedman
 Youth Education
 University of Utah

Virginia/District of Columbia

Nick Swayne
Dustin Skelton
 James Madison University

Washington

Lindy Baker
Susan Martucci
 Washington FIRST Robotics

West Virginia

Todd Ensign
 NASA IV & V Educator Resource Center

Wisconsin

Lisa Bartig
 BadgerBOTS

Wyoming

Cathy Bisiar
 Natrona County School District

2014-2015 FIRST LEGO LEAGUE Global Partners

The following key organizations and Volunteers in the field organize the FIRST LEGO League Program in their respective regions.

Argentina

Martin Bergada
 Educación Tecnológica S.A.

Australia

Luan Heimlich
 Macquarie University

Austria

Stefanie Hauffe
Franzi Ronneburger
 HANDS on TECHNOLOGY e.V.

Belgium

Tamara Derksen
Mark Franken
 Stichting Techniektopromotie

Brazil

Cristina Elsner de Faria
Barbara Cambraia Trajano
 SESI – Brazilian Social Services of Industry –
 National Department

Bulgaria

Kostas Vasileiou
 EduACT

Canada

Alberta
Walter Kowalchuk
 FIRST LEGO League Alberta Youth Robotics
 Society

Newfoundland/Labrador

Clarence Button
Mount Pearl

Nova Scotia

Gary Walsh
 Acadia University

Ontario

David Ellis
 FIRST LEGO League Ontario

Quebec

Rachid Abiza
 Brault & Bouthillier

Chile

Kirstin Engemann
 Fundación SparkTalents

China

Eugene Zhang
 Semia Limited

Colombia

Mónica Maria Sánchez Colorado
 Fundación Global Arte Ciencia y Tecnología

Cyprus

Kostas Vasileiou
 EduACT

Czech Republic

Stefanie Hauffe
Franzi Ronneburger
 HANDS on TECHNOLOGY e.V.

Denmark

Per-Arild Konradsen
Nina Sivertsen
 FIRST Scandinavia

Dominican Republic

Abraham Dauhajre
 Fundación para el Desarrollo de las
 Ciencias y Tecnología

Egypt

Ayman El Kabbany
 Robotics, Technology and Human Resources
 Development Association

Estonia

Heilo Altin
 MTÜ Robotika

Faroe Islands

Per-Arild Konradsen
Nina Sivertsen
 FIRST Scandinavia

France

Bernard Thiery
Erwan Gallee
 Association MEDIO Sciences Environnement

Germany

Stefanie Hauffe
Franzi Ronneburger
 HANDS on TECHNOLOGY e.V.

Greece

Kostas Vasileiou
 EduACT

Haiti

Odule Augustin
 FEDUDEVH

Hong Kong

Eugene Zhang
 Semia Limited
 The Hong Kong Youth Federation

Hungary

Stefanie Hauffe
Franzi Ronneburger
 HANDS on TECHNOLOGY e.V.

Iceland

Birgir Urbancic Ásgeirsson
Gudrun Bachmann
 FIRST LEGO League á Íslandi

India

Sudhanshu Sharma
 India STEM Foundation

Indonesia

Bambang Rusli
 Mikrobot

Ireland

Gareth James
Richard Pering
 The Institution of Engineering and
 Technology

Israel

Alisha MacIntyre
Yaarit Levy
 FIRST Israel

Italy

Franco Finotti
 Fondazione Museo Civico di Rovereto

Japan

Hideki Kamoshida
 FIRST Japan

Jordan

Ismail Yasein Hasan
 King Hussein Foundation

Republic of Korea

Professor Kyoung-Mihn Do
Eric Yongwoo Lee
 FEST (Feeling and Enjoying Science &
 Technology Organization)

Kuwait

Ismail Yasein Hasan
 King Hussein Foundation

Latvia

Heilo Altin
 MTÜ Robotika

Lebanon

Ghazi Mtaweh
 Cedars Cultural School-Education and
 Technology Center

Lithuania

Arturas Gaulia
Ieva Jonatyte
 Robotikos Akademija

Malaysia

KingHui Law
 Sasbadi Sdn Bhd

Mexico

Bárbara Gómez de Navarro
 Explora, Descubre Y Crea, AC

Moldova

Heilo Altin
 MTÜ Robotika

Montenegro

Prof. Srdjan Kadic
 Young Inventors of Montenegro

The Netherlands

Tamara Derksen
Mark Franken
 Stichting Techniektopromotie

New Zealand

Jason Kyle
 Kiwi FIRST

Nigeria

Olajide Ademola Ajayi
 CODERINA

Norway

Per-Arild Konradsen
Nina Sivertsen
 FIRST Scandinavia

Norway

Per-Arild Konradsen
Nina Sivertsen
 FIRST Scandinavia

Pakistan

Rehan Ahmad
Qamar Iqbal
 STARFALL (Science and Technology
 Awareness and Recognition for All)

Palestine

Ismail Yasein Hasan
 King Hussein Foundation

Peru

Luis Linares
 Werther Von Braun IEP SA

Philippines

Mylene Aviva
 FELTA Multi-Media, Inc.

Poland

Stefanie Hauffe
Franzi Ronneburger
 HANDS on TECHNOLOGY e.V.

Portugal

Noah Revoy
 Evoluir21

Qatar

Ismail Yasein Hasan
 King Hussein Foundation

Russia

Aleksei Kornilov
Maxim Petrov
 Volnoe Delo Foundation

Serbia

Andrej Bergant
Natalija Premuzič
 Zavod Super Glavce

Singapore

Hozefa Aziz Singapore Wala
 Duck Learning

Slovakia

Stefanie Hauffe
Franzi Ronneburger
 HANDS on TECHNOLOGY e.V.

Slovenia

Andrej Bergant
Natalija Premuzič
 Zavod Super Glavce

South Africa

Johannes de Vries
 Tshwane University of Technology

Spain

Ricard Huguet
 Fundación Scientia

Sweden

Per-Arild Konradsen
Nina Sivertsen
 FIRST Scandinavia

Switzerland

Stefanie Hauffe
Franzi Ronneburger
 HANDS on TECHNOLOGY e.V.

Taiwan

Johnson Jan
 K Kingdom Inc.

Thailand

Torsak Chantaravisoot
 Gammaco (Thailand) Co. Ltd.

Turkey

Fatma Habib
Davut Habib
 Bilim Kahramanlari Dernegi

Ukraine

Oksana Stoyetskaya
 Prolego Ltd.

United Kingdom

Gareth James
Richard Pering
 The Institution of
 Engineering and Technology

United States

Adventist Robotics League
Mel Wade

Alabama

Dana Hobbs
 Alabama FIRST LEGO League

Alaska

Rebecca Parks
 Juneau Economic Development Council

Arizona

Jennifer Velez
 Ira A. Fulton Schools of Engineering
 Arizona State University

Arkansas

Amber Williamson
 Science and Technology Group, Inc.

California – Central

Michael Adam
 Clovis Unified School District

California – Los Angeles

Tony Ayad
 Girl Scouts of Greater Los Angeles

California – Northern

Mark Edelman
Jill Wilker
 Playing @ Learning

California – Southern

Lynn Crockett
 LEGOLAND®

Colorado

Courtney Goeltzenleuchter
Ross Parrent
 Colorado Robotics, Excelling at Science and
 Technology Inc.

Connecticut

Mike Gentry
 Central Connecticut State University

Delaware

Eric Cheek
 Delaware State University

Florida

Laura Melnik
 Florida Robotics Education, Inc.

Georgia

Jeff Rosen
Storm Robinson
Julie Sonnenberg-Klein
 Georgia Institute of Technology

Hawaii

Aaron Dangler
Blaine Kashiwaeda
 Hawaii FIRST® LEGO® League

Idaho

Timothy Ewers, Ph.D.
William Boyd
 Extension 4-H, University of Idaho

Illinois

Tom Kleinschmidt
Diane Michalczuk
 INSciTE Illinois

Indiana

Carol Dostal
 College of Engineering,
 Technology and Computer Science
 Indiana University –
 Purdue University, Fort Wayne

Iowa

Camille Sloan-Schroeder
 College of Engineering, Iowa State University

Kansas – Liberal

Jim Bert
 Mid America Air Museum

Kansas City Region

Gretchen Neis
Laura Bauer
 Curators, University of Missouri

Kansas – Southeast - Greenbush

Lisa Blair
 Greenbush, Southeast Kansas Education
 Service Center

Kentucky

John Farrar
 Northern Kentucky University

Louisiana

Annette Oertling
Scot Marshall
 BLaST, Inc.
 (Building Louisiana Science
 and Technology)

Maine

Tom Bickford
 Maine Robotics

Maryland

Anne Spence, Ph.D.
Jamie Gurganus
 College of Engineering
 & Information Technology
 University of Maryland Baltimore

Massachusetts

Colleen Shaver
 Worcester Polytechnic Institute

Michigan

Pamela Williamson
 FIRST in Michigan

Minnesota

Vicky Coaty
Cheryl Moeller
 High Tech Kids

Mississippi

Eddie Melton
 Robotics Alliance of Mississippi

Missouri – St. Louis

Kathie Reuter
LeAnn Ore Heumphreus
 St. Louis Community College –
 Florissant Valley

Montana

Allison Banfield
 Montana State University – Bozeman

The National Society of Black Engineers (NSBE)

Katrina Hill

Nebraska

Kate Pittack
 University of Nebraska –
 Lincoln 4-H Youth Development

Nevada – Las Vegas

Jean Hoppert
 FIRST Nevada

Nevada – Reno

Dee Frewert
 FIRST Nevada

New Hampshire

Kristen Zuege
Brian Belley
 BAE Systems

New Jersey

Ernest DiCiccio, Jr.
 Mount Olive Robotics Education
 Association

New Mexico

Chris Morgan
Sandy Trissell
 Girl Scouts of New Mexico Trails

New York – Finger Lakes

Elayne Stewart
Damian Garcia
Costas Solomou
 University of Rochester

New York – Long Island

Janet Anderson
 SBPLI, Inc.

New York – Mid-Hudson Valley

Casimer DeCusatis
Leah Akins
John Houston
 Hudson Valley FIRST LEGO League

New York – New York City

Mark Sharfshteyn
Peter Xanthus
 NYC FIRST

New York – Potsdam

Amanda Hitterman
Jessica McPherson
James Carroll
 Clarkson University

New York – Utica

Elizabeth Rossi
 SUNY Institute of Technology

North Carolina

Dr. Kory Bennett
 North Carolina A&T State University

North Dakota

Ashley Miller
Christina Loh
Glen Klawon
 University of North Dakota,
 School of Engineering & Mines

Ohio

South Dakota
Amy Engebretson
Kristie Maher
EmBe

Tennessee – East
Paula Suchomski
Kris Craven
Bradley Weil
Tennessee Technological University

Tennessee - West
Tom Banning
Daniel Kohn
Frank Niedzwiedz
University of Memphis

Texas – Alamo
Andrew Schuetze
Alamo College – Northwest Vista College

Texas – Central
Noah Bickford
Bethany Paul
Skillpoint Alliance

Texas – North
Kristi Cantu
Teresa Lenling
Perot Museum of Nature and Science

Texas – South
Karen Cohen
The University of Houston – CORE

Texas – Southwest
Gabby Gandara
Virgilio Gonzalez
University of Texas at El Paso

Utah
Kathy Hajeb
Anne Bastien
Technology Venture Development
University of Utah

Virginia/District of Columbia
Nick Swayne
Dustin Skelton
James Madison University

Washington
Erin McCallum
Lindy Baker
Susan Martucci
Washington FIRST Robotics

West Virginia
Todd Ensign
NASA IV & V Educator Resource Center

Wisconsin
Lisa Bartig
Ben Senson
BadgerBOTS

Wyoming
Shannon Fischer
Natrona County School District

Yemen
Ismail Yasein Hasan
King Hussein Foundation

**2014-2015
FIRST TECH CHALLENGE**
The following key organizations and Volunteers in the field organize the FIRST Tech Challenge Program in their respective regions.

Affiliate Partners

Australia
Luan Heimlich
Michael Heimlich
Macquarie University

Canada
Alberta
Philippe Manseau

China
Eugene Zhang
Semia Limited

Czech Republic
Perry Barlien
International School of Prague

France
Alice Caplier
Grenoble INP

India
Sudhanshu Sharma
Techtronics Education

Republic of Korea
Professor Kyoung-Mihn Do
FEST Creative Engineering Education Association (Feeling and Enjoying Science & Technology Organization)

Mexico
Bárbara Gómez de Navarro
Explora, Descubre Y Crea, AC

The Netherlands
Lennart de Graaf
Fontys Hogeschool ICT

New Zealand
Jason Kyle
Kiwi FIRST

Russia
Maxim Petrov
Volnoe Delo Foundation

Saudi Arabia
Husam Al Madani
National Talent Training Center

South Africa
Johannes de Vries
FSATIE

Taiwan
Johnson Jan
ESUN Robot Association

United States

Alaska
Brian Holst
Juneau Economic Development Council

Arizona
Christine Sapio
Coconino High School

David Thompson
Northern Arizona University

Arkansas
Jacquelyn Meissner
Mountain Home High School – Career Academies

California – Los Angeles
Liberty Naud
SMaRT Education

California – Northern California
Jill Wilker
Mark Edelman
Playing @ Learning

California – San Diego
John and Marion Brooks

Colorado
Matthew Collier
Kathy Collier
LAUNCH

Connecticut
Evan Barnet

Delaware
Eric Cheek
Delaware State University

Florida
Hans Wolf
Tampa Bay Robotics Foundation, Inc.

Georgia
Connie Haynes
Georgia FIRST

Hawai'i
Aaron Dengler
Punahou School

Idaho
Tim Ewers
University of Idaho Extension 4-H

Illinois
Michael Seedman

Indiana
Darrin Wilcoxson
Crawfordsville High School

Iowa
Rebecca Whitaker
University of Iowa

Kentucky
Shawn Payne
Jessica Cecil
Owensboro Community and Technical College

Maryland
Bill Duncan
STEMaction, Inc.

Massachusetts
Loretta Bessette
MIT Lincoln Laboratory

Michigan High School
Betsy Lamb
Cranbrook Schools

Michigan Middle School
Francois Castaing
Gail Alpert
FIRST in Michigan

Minnesota
Cheryl Moeller
High Tech Kids

Mississippi
John O'Haver
University of Mississippi

Missouri
Dr. Marcia Pfeiffer
Ashok Agrawal
St. Louis Community College

Montana
Ed Huth
Oracle

Nebraska
Brad Barker
Nebraska 4-H Youth Development

Nevada – Las Vegas
David Philippi
Northwest Career and Technical Academy

Jean Hoppert
FIRST Nevada

New Jersey
Joel Bloom
New Jersey Institute of Technology

New York City
Pat Daly
NYC FIRST

New York – Hudson Valley
New York – Empire
Richard Kline
Pace University

New York – Potsdam
James Carroll
Clarkson University

North Carolina
Dr. Kory Bennett
North Carolina A&T State University

North Dakota
Paul Keidel
Bismarck Career Academy

Ohio
Linda Neenan
iSPACE, Inc.

Oklahoma
Brad Fitzgerald
Southwest Oklahoma State University

Oregon
Bruce Schafer
Cathy Swider
ORTOP

Pennsylvania
Thomas Zawislak
Pennsylvania FIRST Robotics

Rhode Island
Erin Flynn
New England Institute of Technology

South Carolina
William Pedersen
John Fogarty
South Carolina Robotics Education Foundation

Texas – Dallas/Fort Worth
Dr. Carter Tiernan
College of Engineering
University of Texas at Arlington

Texas – Lubbock
Richard Gale
Texas Tech University

Texas – Pasadena/Houston
Sharon Sledge
San Jacinto College

Texas – San Antonio
Andrew Schuetze

Utah
David Ferro
Weber State University

Vermont
Douglas Dickey
Kristin Winer
University of Vermont

Virginia
Scott McKay
Virginia FIRST

Washington
Eric Stokely
Washington FIRST Robotics

West Virginia
Peggy Vance
Logan County Schools

Wisconsin
Michael Krauski
University of Wisconsin Milwaukee

Wyoming
Shannon Fischer
Natrona County School District

Program Managers

China
Andrew Bannish
Kevin Li
Flora Li
Xiangpeng Zhang
Semia Limited

Czech Republic
Joe Monks

India
Rajan Malhotra

Republic of Korea
Eric Lee
FEST Creative Engineering Education Association

Saudi Arabia
Mohammed Alsenwar
National Talent Training Center

Taiwan
Rene Cheng
ESUN Robot Association

United States

Alaska
Rebecca Soza
David Patterson

California – Los Angeles
Gigi Johnson
Brian Bugert Sr.
Theresa Klemme
Maggie Scholtz

Georgia
Robert May

Hawai'i
Blake Uramoto
Jenny Uramoto

Idaho
Will Boyd

Illinois
Dan Green
Sue Kunzeman
Jonathan Weiland

Indiana
Lori Hall

Michigan Middle School
Tammy Damrath
Ken Platteschorre

Minnesota
Vicki Coaty

Mississippi
Mannie Lowe

Missouri
Susie Mathieu
Tom McGovern
Diana Howard

Montana
Allison Banfield
Montana State University

New Jersey
Vince Frascella
Patricia Frascella

New York City
Norm Sutaria

New York – Hudson Valley
New York – Empire
Bernice Houle
Pace University

Pennsylvania
Dave Hackett

Texas – Dallas/Fort Worth
Chris Carter
Dave Davis
College of Engineering
University of Texas at Arlington

Texas – Lubbock
Alan Barhorst
Dina Barhorst
Texas Tech University

Texas – Pasadena/Houston
Nelson Carter
San Jacinto College

Utah
Dana Dellinger

Vermont
Jeff Frolik
University of Vermont

Virginia
Carol Edelman

Washington
Kevin Ross
Adrienne Rime

Wisconsin
Julianne Pickering
University of Wisconsin Milwaukee

**2015
FIRST ROBOTICS
COMPETITION**
The following organizations partner with FIRST to implement the FIRST Robotics Competition Program in a specified region.

Australia
Macquarie University

Canada
FIRST Robotics Canada

Israel
FIRST Israel

Mexico
Fundación Azteca

United States

Arizona
AZFirst

Arkansas
Arkansas FIRST

Colorado
Colorado FIRST

Florida
Florida FIRST Robotics Education Foundation, Inc. (FFREF)

Georgia
Georgia FIRST Robotics Inc.

Hawai'i
Friends of Hawaii Robotics

Illinois
FIRST Illinois Robotics

Indiana
Indiana FIRST

Louisiana
BLaST, Inc.
(Building Louisiana Science and Technology)

Michigan
FIRST in Michigan (FiM)

Mid-Atlantic Region
Mid-Atlantic Robotics,
a NJ Non-Profit Corp. (MAR)

Missouri – Kansas City
University of Missouri – Kansas City (UMKC)

Missouri – St. Louis
Saint Louis Science Center

Nevada
FIRST Nevada

New England
ingenuityNE Inc.

New York City
NYC FIRST

New York – Long Island
School-Business Partnerships of Long Island, Inc. (SBPLI)

North Carolina
NC FIRST Robotics

Ohio
Ohio Aerospace Institute

South Carolina
Palmetto Partners for Science and Technology

Tennessee
TNFIRST, LLC

Texas
FIRST in Texas

Virginia
Virginia FIRST

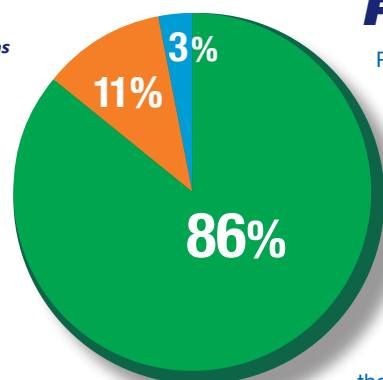
Washington
Washington FIRST Robotics

FINANCIALS

Program expansion and mission successes continued in fiscal year 2014-2015 with balanced growth in revenues and expenses, including additional investments in our Youth Protection Program, Information Technology, Program Evaluation, and new investment in our Diversity & Inclusion Program. Contributions remained strong, as many individuals, small businesses, corporations – including over 200 of the *Fortune* 500 companies – and foundations maintained or increased their support, while new Sponsors joined *FIRST*. This support provided meaningful experiences to more than 359,000 youth engaged in the *FIRST* Progression of Programs.

As noted in the graph, and in keeping with long-time practices, *FIRST* continues to apply the maximum percentage of funds possible to directly benefit *FIRST* participants. Included within the modest G&A expenses are significant investments in infrastructure enhancements, including those noted above.

FIRST achieved its tenth consecutive four-star rating from Charity Navigator, certifying our continued commitment to accountability, transparency, and sound fiscal management. This consecutive rating places *FIRST* in the top 1% of the U.S. charities evaluated by Charity Navigator.



STATEMENTS OF ACTIVITIES

Revenues and other support:

	JUNE 30, 2015	JUNE 30, 2014
Program registration fees	\$ 22,718,237	\$ 20,474,334
Contributions and grants	18,214,680	19,111,341
Other income, net of expenses of \$98,099 in 2015 and \$93,186 in 2014	1,045,962	983,529
Special project (loss) income, net of expenses of \$1,196,117 in 2015 and \$725,116 in 2014	(136,485)	126,385
Net assets released from restrictions	17,449,790	14,739,677

Total revenues (losses) and other support **59,291,914** **55,435,266**

Expenses

<i>FIRST</i> Robotics Competition	39,493,796	36,203,436
<i>FIRST</i> LEGO League and <i>FIRST</i> LEGO League Jr.	6,024,042	6,400,585
<i>FIRST</i> Tech Challenge	3,832,813	3,050,151
<i>FIRST</i> Place	14,881	12,562
Net cost of building space occupied by unrelated not-for-profit organizations	256,625	244,774
General, administrative and supporting services, and fundraising	7,688,961	7,262,637
Operation of <i>FIRST</i> facilities	437,912	418,621
Depreciation	532,434	529,923

Total expenses **58,281,464** **54,122,689**

Operating surplus 1,010,450 1,312,577

STATEMENTS OF FINANCIAL POSITION

Assets:

Cash and cash equivalents*	15,485,707	18,225,785
Short-term investments*	8,250,000	8,500,000
Pledges, receivables, program supply inventory, and other assets	10,804,438	8,102,948
Net property, plant, and equipment	4,524,283	3,961,488

Total assets, end of year **39,064,428** **38,790,221**

Liabilities and net assets:

Total liabilities, end of year **2,376,582** **2,276,854**

Net assets:		
Unrestricted	22,777,156	21,766,706
Temporarily restricted	13,910,690	14,746,661

Total net assets, end of year **36,687,846** **36,513,367**

Total liabilities and net assets, end of year **\$ 39,064,428** **\$ 38,790,221**

For each of the two fiscal years summarized above, *FIRST* received unmodified (unqualified) opinions from its independent auditors, BerryDunn.

*Note: The cash and short-term investments are comprised of both unrestricted funds and donor temporarily restricted funds. The total liquid assets balance available to *FIRST*, for operating purposes, at June 30, 2015, is equivalent to approximately four months of *FIRST* operating expenses.

The financial information presented here is condensed and does not include the value of all donated services and materials. Audited Financial Statements (AFS) are readily available on the website at www.firstinspires.org under "About/Annual Report." For details, please refer to the accompanying notes, which are an integral part of the AFS, at the above web address.

LEADERSHIP

Board of Directors

Sheri S. McCoy - Co-Chair
Chief Executive Officer & Director
Avon Products, Inc.

Robert M. Tuttle - Co-Chair
General Partner
1848 Associates

John E. Abele - Vice Chair
Founding Chairman, Retired
Boston Scientific Corporation

Donald E. Bossi - Secretary
President
FIRST®

Dean Kamen - Founder
President
DEKA Research & Development Corporation

Ursula M. Burns
Chairman & Chief Executive Officer
Xerox Corporation

Dr. Robin N. Coger
Dean, College of Engineering
North Carolina A&T State University

David Crane
Former President & Chief Executive Officer
NRG Energy, Inc.

Walter P. Havenstein
Chief Executive Officer, Retired
Science Applications International Corporation (SAIC)

Dr. Paul E. Jacobs
Executive Chairman of the Board
Qualcomm Incorporated

Muhtar Kent
Chairman of the Board & Chief Executive Officer
The Coca-Cola Company

Dr. Laurie Leshin
President
Worcester Polytechnic Institute

John H. Lynch
Former Governor
State of New Hampshire

Scott McKay
Executive Vice President & Chief Information Officer
Genworth Financial

Dennis A. Muilenburg
Chairman, President, & Chief Executive Officer
The Boeing Company

Robert K. Ortberg
Chairman, President, & Chief Executive Officer
Rockwell Collins

Robert L. Parkinson, Jr.
Chairman Emeritus
Baxter International Inc.

Steve Sanghi
Chairman of the Board, President, & Chief Executive Officer
Microchip Technology, Inc.

Myron (Mike) E. Ullman, III
Executive Chairman
JCPenney

Honorary Directors

Paul A. Allaire
FIRST Chairman: 1995-2000
Chairman & Chief Executive Officer, Retired
Xerox Corporation

J.T. Battenberg III
Chairman & Chief Executive Officer, Retired
Delphi Corporation

Francois J. Castaing
Executive Vice President, Retired
Chrysler Corporation

L. John Doerr III
Partner
Kleiner Perkins Caufield & Byers

Gary L. Tooker
Chairman of the Board, Retired
Motorola, Inc.

James R. Utaski
FIRST Chairman: 2000-2002
Corporate Mergers & Acquisitions Officer, Retired
Johnson & Johnson

Senior Advisors

Dr. Shirley Ann Jackson
President
Rensselaer Polytechnic Institute

Kjeld Kirk Kristiansen
Chairman of the Board
LEGO Foundation & KIRKBI A/S

Gordon Lankton
Chairman of the Board, Retired
Nypro Inc.

Dr. William P. Murphy, Jr.
Founder
Cordis Corporation

Dr. Roland Schmitt
President Emeritus
Rensselaer Polytechnic Institute

The Honorable Jeanne Shaheen
United States Senator
New Hampshire

Executive Advisory Board

Dr. Woodie Flowers - Co-Chair & Distinguished Advisor
Pappalardo Professor Emeritus of Mechanical Engineering
Massachusetts Institute of Technology

Vincent Wilczynski, Ph.D. - Co-Chair
Deputy Dean, School of Engineering & Applied Science
Yale University

Ray Almgren
Chairman
FIRST in Texas

Gail Alpert
President
FIRST in Michigan

Tom Arseneault
Chief Operating Officer
BAE Systems, Inc.

Sujeet Chand
Chief Technology Officer & Senior Vice President
Rockwell Automation, Inc.

Cosema (Connie) Crawford, P.E.
Senior Vice President
The Louis Berger Group, Inc.

Michael Dubno
Head of Global Markets & Research Technology, Retired
Bank of America Merrill Lynch

Greg Hale
Vice President & Chief Safety Officer
Walt Disney Parks & Resorts

Erik Halleus
President & Chief Executive Officer
EuroScandia Enterprises

James E. Heppelmann
President & Chief Executive Officer
PTC

Marc Hodosh
Co-Creator
TEDMED

Kent H. Hughes
Public Policy Scholar
Woodrow Wilson International Center for Scholars

Kyle Hughes
Founder and Teacher
Clarkston High School Science, Mathematics, and Technology Academy

Jacob Kragh
Senior Vice President, China
LEGO

David Lavery
Program Executive for Solar System Exploration
NASA

Paul Lazarus
President
White Dwarf Productions

Susie Mathieu
Partner
Spirit Hockey, LLC

Ceci Neumann
Independent Law Practice Professional

Kevin Ross
Founder
Washington *FIRST* Robotics

Robert Sobolewski
President & Chairman
ingenuityNE

Josh S. Weston
Honorary Chairman
Automatic Data Processing, Inc.

Leadership Team

Donald E. Bossi
President
FIRST

Steven R. Chism
Vice President, Programs
FIRST

Terry Durkin
Vice President, Finance
FIRST

Mark Giordano
Vice President, Development
FIRST

Mark Greenlaw
Vice President, Strategy and Impact
FIRST

Roseann Stevens
Vice President, Field Operations, Volunteer Resources, and Youth Protection
FIRST

Listing current as of March 1, 2016

Championship photography by Adriana M. Groisman, Argenis Apolinario, Dan Donovan, Lara Longo, and Lou Ravetta. Other images courtesy of FIRST teams, Volunteers, and Sponsors.



Vision

“To transform our culture by creating a world where science and technology are celebrated and where young people dream of becoming science and technology leaders.” Dean Kamen, Founder

Mission

To inspire young people to be science and technology leaders, by engaging them in exciting Mentor-based programs that build science, engineering, and technology skills, that inspire innovation, and that foster well-rounded life capabilities including self-confidence, communication, and leadership.

Impact

MORE THAN ROBOTSSM *FIRST participation is proven to encourage students to pursue education and careers in STEM-related fields, inspire them to become leaders and innovators, and enhance their 21st century work-life skills.*



www.firstinspires.org

▲ 200 Bedford Street ● Manchester, NH 03101 ■ 800.871.8326

FIRST®, the FIRST® logo, FIRST® Robotics Competition, FRC®, FIRST® Tech Challenge, FTC®, Coopertition®, Gracious Professionalism®, Sport for the Mind™, RECYCLE RUSH™, and CASCADE EFFECT™ are trademarks of the United States Foundation for Inspiration and Recognition of Science and Technology (FIRST®). LEGO® and MINDSTORMS® are registered trademarks of the LEGO Group. FIRST® LEGO® League, FLL®, Junior FIRST® LEGO® League, FIRST® LEGO® League Jr., Jr.FLL®, FLL WORLD CLASS™, and Jr.FLL THINK TANK™ are jointly held trademarks of FIRST and the LEGO Group. All other trademarks are the property of their respective owners.
©2016 FIRST. All rights reserved.



FOR INSPIRATION & RECOGNITION OF SCIENCE & TECHNOLOGY